

27
SECTION

17
TOWN

06
RANGE

ADAMS COUNTY

COUNTY CORNER NO: 109

ROMPORTOL ID: 41706270000

PUBLIC LAND SURVEY MONUMENT RECORD

TYPE OF MONUMENT: HARRISON

ADAMS COUNTY COORDINATES, NAD 83 (2007)

N. 197704.589

E. 547058.814

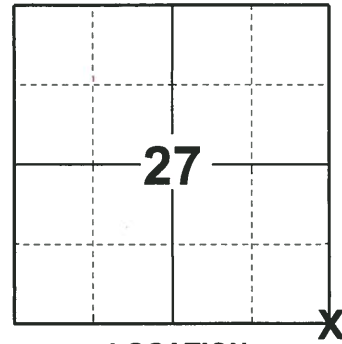
ELEVATION- - - - DATUM - - - -

FIELD WORK DATE: 08/30/2018

BASIS FOR MONUMENT LOCATION

1975 - PLS 1103 RAN AN EDM/TRANSIT TRAVERSE AROUND THE ENTIRE AREA TO DETERMINE SEARCH AREAS FOR THE CORNERS. AN EXTENSIVE SEARCH REVEALED NO CONCLUSIVE EVIDENCE AS TO THE LOCATION OF THE ORIGINAL CORNER OR ANY SUBSEQUENT REMONUMENTATION AT THIS CORNER. CALCULATED THE CORNER POSITION PROPORTIONATELY AND ON LINE BETWEEN ADJACENT SECTION AND QUARTER CORNERS. SET A HARRISON MONUMENT AT THE CALCULATED POSITION AND TIED OUT.

2018 - PLS 2675 FOUND A HARRISON MONUMENT 4" ABOVE THE GROUND SURFACE. FOUND NO EVIDENCE OF ANY OF THE EXISTING TIES OR WITNESSES. ACCEPTED THE HARRISON MONUMENT AS THE BEST EVIDENCE OF THE CORNER LOCATION. SET 4 NEW TIES AND MEASURED TO THE TIES.



LOCATION

(INDICATE CORNER BY "X")

SEAL:



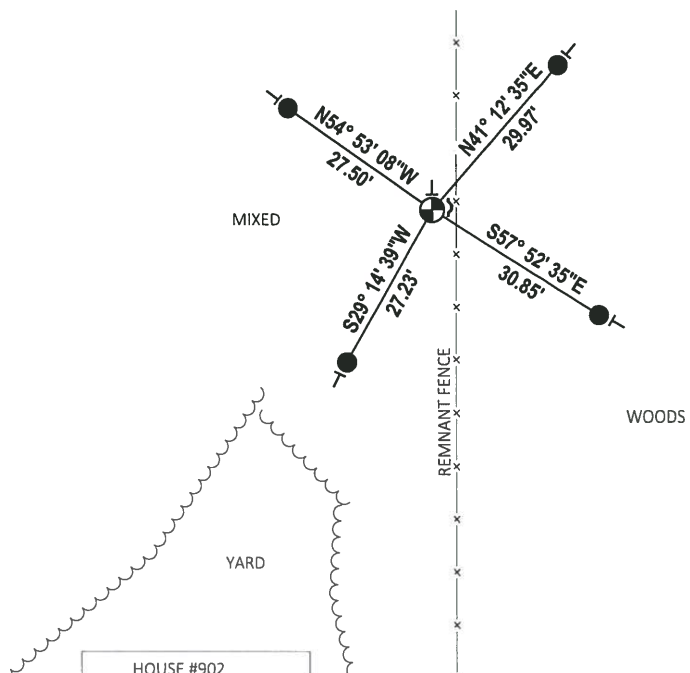
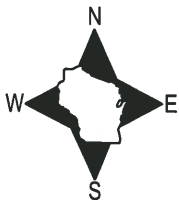
DATA SHOWN HERE ON THIS TIE SHEET IS CORRECT AND COMPLETE TO THE BEST OF MY KNOWLEDGE AND BELIEF.

PROFESSIONAL LAND SURVEYOR

DATE 12/4/2018

- TIE SKETCH

NOTE: THE CORNER FALLS 3± WEST OF THE REMNANT FENCE AND 250± NORTHEAST FROM THE NORTHEAST CORNER OF HOUSE #902.



- SET 3/4" x 18" IRON REBAR, 1.50#/FT
- ⊕ FOUND HARRISON MONUMENT
- ┘ STEEL FENCE POST
- └ VINYL "T" POST

ADAMS COUNTY

Survey Monument Record

TYPE OF MONUMENT: Harrison Monument (30 inches)

STATE PLANE COORDINATES: N _____

E _____

ELEVATION — M.S.L. DATUM: _____

THETA ANGLE: _____

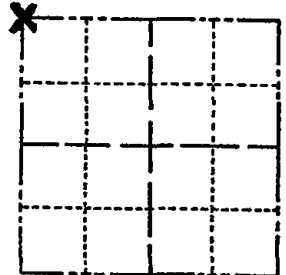
FIELD BOOK: _____ PAGE _____

CORNER NO. 669

SECTION 35

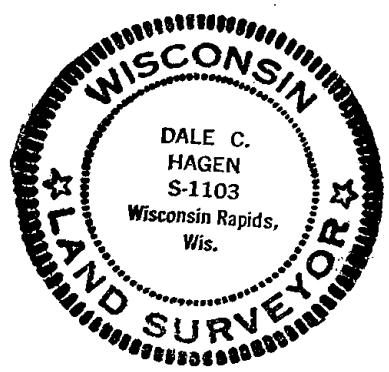
TOWN 17

RANGE 6



LOCATION
(Indicated by 'X')

SEAL:



BASIS FOR MONUMENT LOCATION

(Use reverse side if necessary)

Show info such as: History of corner, with reference to Vol. and pg, dates, surveyor; exact description of monument replaced; if location computed, by taped or EDM traverse; landowner remarks, etc.

Set corner proportionately and on line between adjacent section and quarter corners.

Ran EDM/transit traverse around the entire area to determine search areas for the corners. An extensive search revealed no conclusive evidence as to the location of the original corner or any subsequent remonumentation at this corner.

COR. O.K. 10-2-75 SS
 11 2/10/80 R.S.
 11 8-9-85 D.S.
 1 GONE 1 NEW 2-14-90 KZ-GR
 1 GONE 1 NEW 8-4-94 JG-B3

CERTIFIED CORRECT:

Dale C Hagen

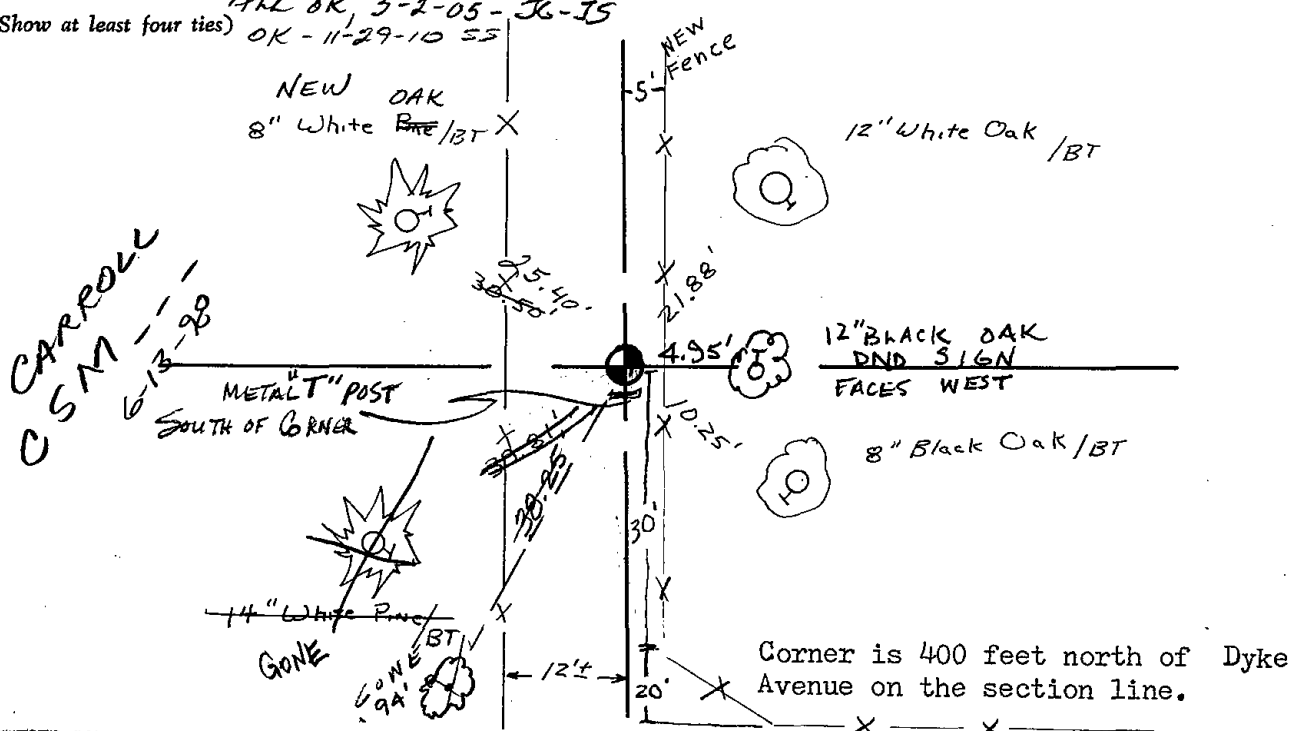
Registered Land Surveyor

DATE: 6/3/75

TIE SKETCH

NOTE: Ties to nail and disc in trees

(Show at least four ties)



Corner is 400 feet north of Dyke Avenue on the section line.