

32 SECTION 17 TOWN 06 RANGE

ADAMS COUNTY

COUNTY CORNER NO: 116
ROMPORTOL ID: 41706322000

PUBLIC LAND SURVEY MONUMENT RECORD

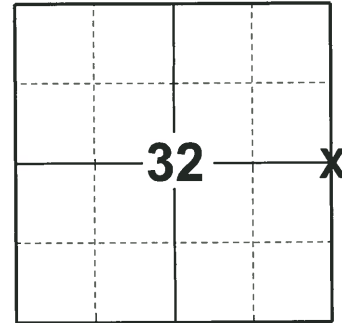
TYPE OF MONUMENT: HARRISON (BROKEN-TOP)
ADAMS COUNTY COORDINATES, NAD 83 (2007)

N. 194985.827

E. 536477.132

ELEVATION- _____ DATUM _____

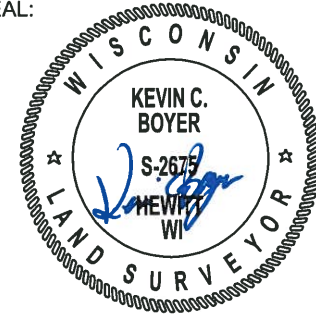
FIELD WORK DATE: 09/17/2018



LOCATION

(INDICATE CORNER BY "X")

SEAL:



DATA SHOWN HERE ON THIS TIE SHEET IS CORRECT AND COMPLETE TO THE BEST OF MY KNOWLEDGE AND BELIEF.

PROFESSIONAL LAND SURVEYOR

DATE 12/4/2018

BASIS FOR MONUMENT LOCATION

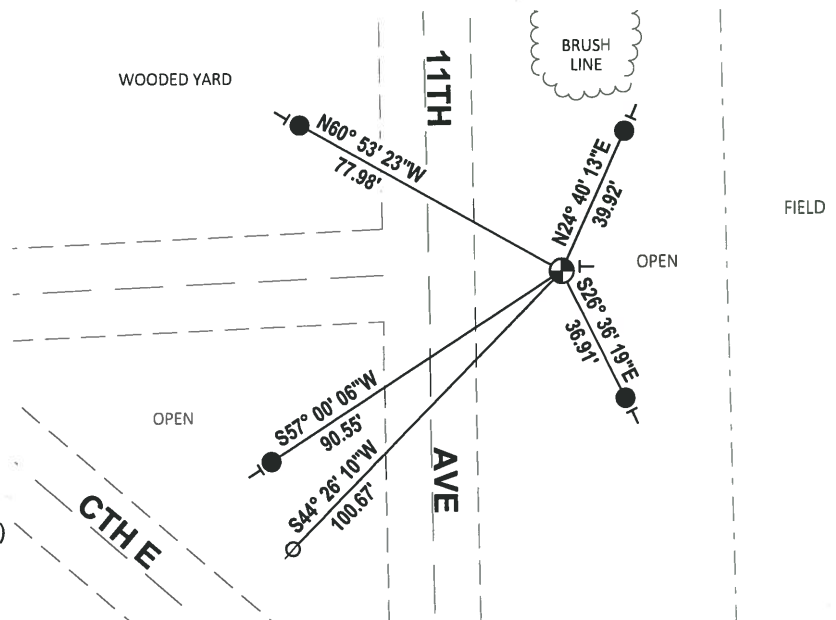
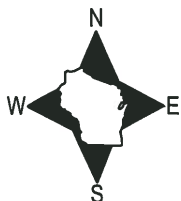
1978 - PLS 1267 FOUND NO EVIDENCE OF ANY RESURVEYS OF THE CORNER IN RECORDS. TRAVERSED THE SECTION BY EDM TRAVERSE AND FOUND NO EVIDENCE OF THE CORNER. CALCULATED THE CORNER LOCATION FROM SINGLE PROPORTIONING OF THE EAST LINE OF SECTION 32. SET A HARRISON AT THE CALCULATED POSITION AND TIED OUT.

1981 - PLS 1478 FOUND NO RECORD OF ANY MONUMENTATION SUBSEQUENT TO THE ORIGINAL. CALCULATED THE CORNER LOCATION EQUIDISTANT AND ON LINE. THIS LOCATION FITS POSSESSION WITHIN THE ADJOINING SECTIONS VERY WELL. SET A HARRISON MONUMENT AT THE CALCULATED LOCATION AND TIED OUT.

2018 - PLS 2675 FOUND A HARRISON MONUMENT WITH A BROKEN-TOP 4" BELOW THE ROAD SURFACE AND 1 WITNESS. THE MONUMENT AGREES WITH THE EXISTING WITNESS. ACCEPTED THE HARRISON MONUMENT WITH A BROKEN-TOP AS THE CORNER LOCATION. SET 4 NEW TIES AND MEASURED TO THE TIES AND WITNESS.

- TIE SKETCH

NOTE: THE CORNER FALLS 35'± EAST OF THE CENTERLINE OF 11TH AVE.

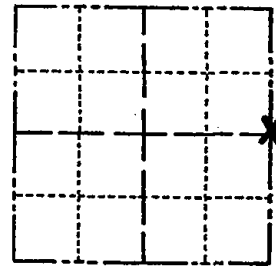


- SET 3/4" x 18" IRON REBAR, 1.50#/FT
- ⊕ FOUND HARRISON MONUMENT (BROKEN-TOP)
- ⊙ WITNESS POWER POLE
- | VINYL "T" POST

Government Land Corner Certificate

ADAMS County
 TYPE OF MONUMENT: HARRISON STANDARD
 STATE PLANE COORDINATES: N _____
 E _____
 ELEVATION — M.S.L. DATUM: _____
 THETA ANGLE: _____
 FIELD BOOK: _____ PAGE _____
 DRAWN BY: S.S.

CORNER NO. 116
 SECTION 32
 TOWN 17
 RANGE 6



LOCATION
(Indicated by 'X')

BASIS FOR MONUMENT LOCATION

Show info such as: History of corner, with reference to Vol. and pg., dates, surveyor; exact description of monument replaced; if location computed, by taped or EDM traverse; landowner remarks, etc. (Use reverse side if necessary).

Set monument equidistant and on line between adjacent section corners. No record of any monumentation subsequent to the original was found. This location fits possession within the adjoining sections very well.

SEAL:



DATA SHOWN HERE ON
CERTIFIED CORRECT:

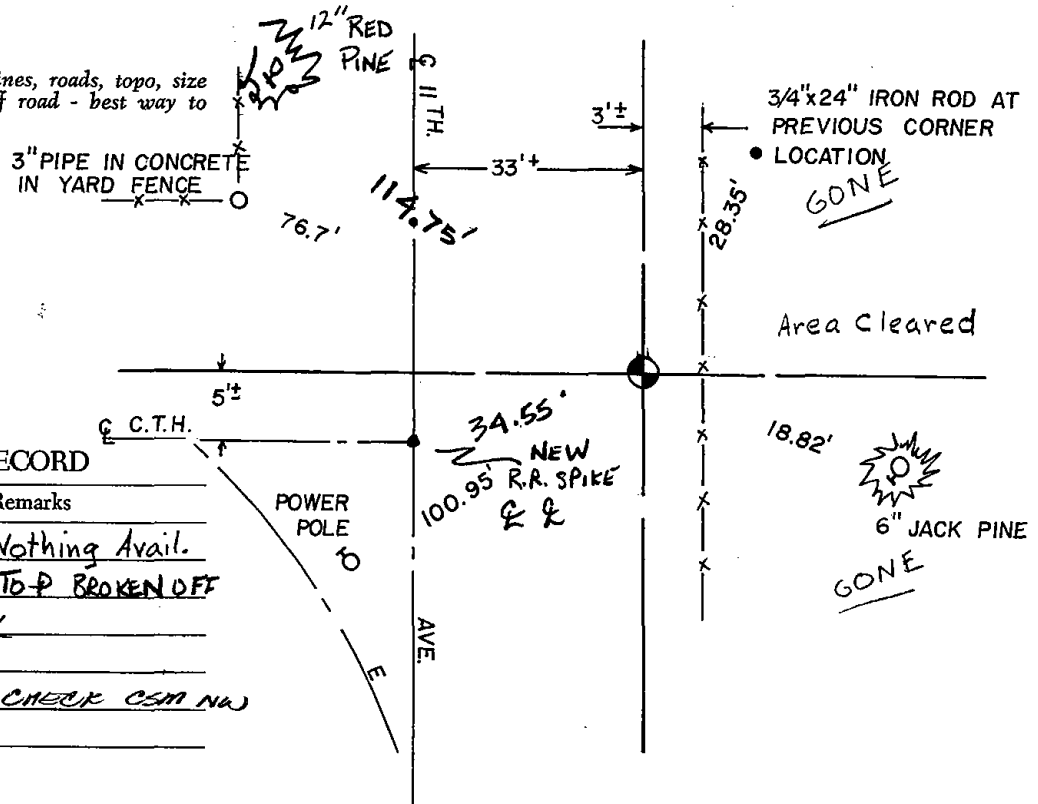
Gregory P. Rhinehart
Registered Land Surveyor

DATE: June 1, 1981

TIE SKETCH

Show at least four ties, also fence lines, roads, topo, size and type of witness trees' and if off road - best way to arrive at corner.

NOTE: TIES ARE TO PK NAIL/SHINER-TREES ARE BLAZED



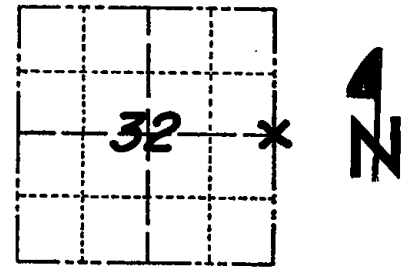
MAINTENANCE RECORD

Date	Init.	Remarks
7-26-85	DK	2-Gone, Nothing Avail.
8-3-94	SGBS	2-NEW, TOP BROKEN OFF
2-14-00	JG	ALL OK
1-25-05	SG	OK
1-20-10	SS	TIES OK - CHECK CSM NW

Government Land Corner Certificate

ADAMS County
 TYPE OF MONUMENT: HARRISON
 STATE PLANE COORDINATES: N _____
 E _____
 ELEVATION — M.S.L. DATUM: _____
 THETA ANGLE: _____
 FIELD BOOK: 563 PAGE 58-68
 DRAWN BY: _____

CORNER NO. 116
 SECTION 32
 TOWN 17N
 RANGE 6E



LOCATION
(Indicated by 'X')

BASIS FOR MONUMENT LOCATION

Show info such as: History of corner, with reference to Vol. and pg., dates, surveyor; exact description of monument replaced; if location computed, by taped or EDM traverse; landowner remarks, etc. (Use reverse side if necessary)

E $\frac{1}{4}$ Section 32

Checked records and found no evidence of resurvey of corner and found no evidence of corner, traversed Section by EDM and T-2. Set corner from single proportioning of East line of Section 32.

Handwritten notes:
 This corner needs tying
 See New Attached tie Sheet
 SEE CSM TO SW 2-14-90 KZ-GR 1767
 8-3-94 2 NEW TIES, TOP BROKEN OFF JG-BS

SEAL:



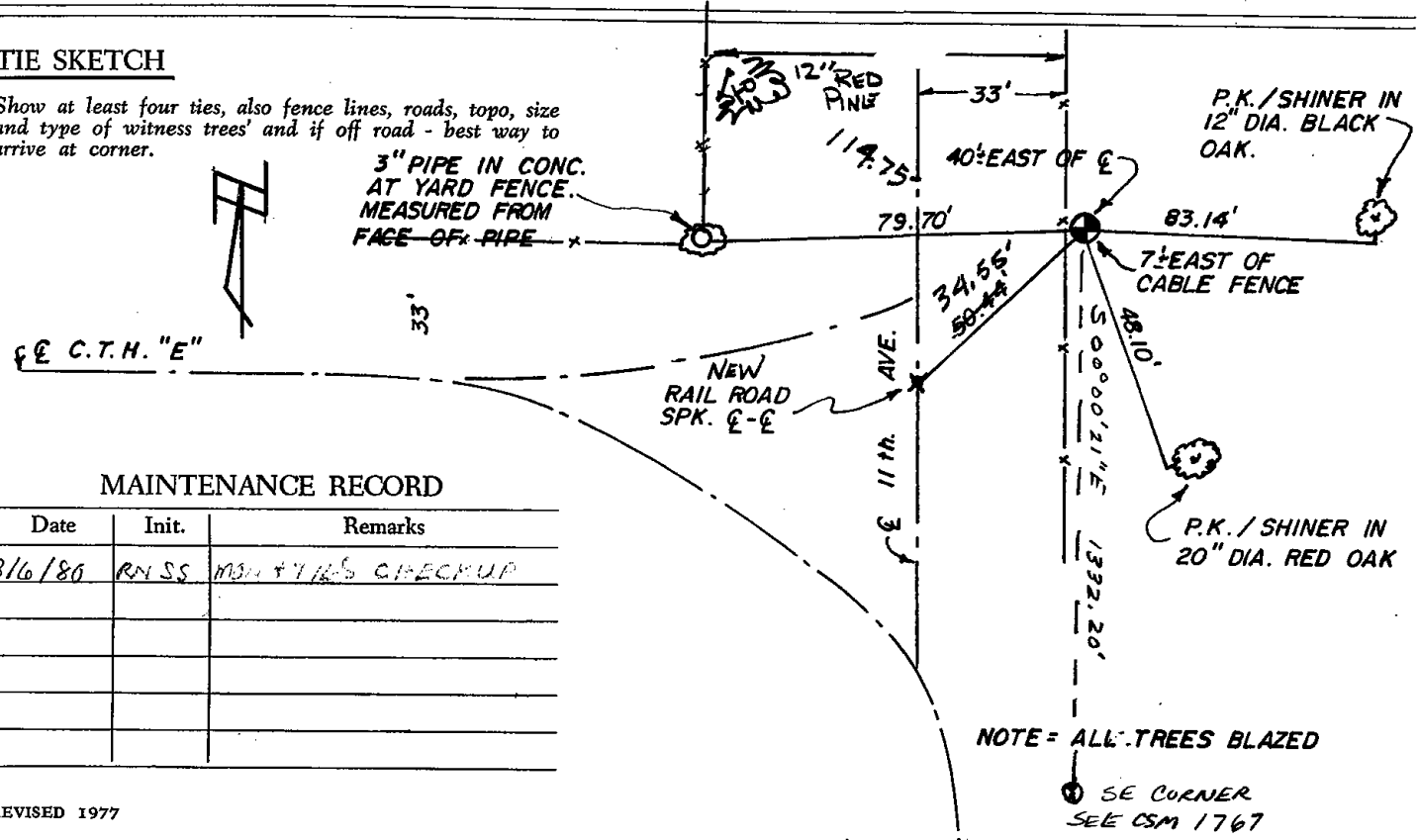
DATA SHOWN HERE ON CERTIFIED CORRECT:

Ken Schuette
 Registered Land Surveyor

DATE: 21 Dec 1978

TIE SKETCH

Show at least four ties, also fence lines, roads, topo, size and type of witness trees' and if off road - best way to arrive at corner.



MAINTENANCE RECORD

Date	Init.	Remarks
3/6/80	RN SS	MON + 7/16/80 CHECKUP