

34 SECTION 17 TOWN 06 RANGE

# ADAMS COUNTY

COUNTY CORNER NO: 118  
ROMPORTOL ID: 41706342000

## PUBLIC LAND SURVEY MONUMENT RECORD

TYPE OF MONUMENT: HARRISON  
ADAMS COUNTY COORDINATES, NAD 83 (2007)

N. 195073.265

E. 547062.494

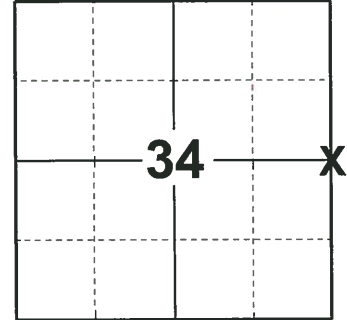
ELEVATION- \_\_\_\_\_ DATUM \_\_\_\_\_

FIELD WORK DATE: 09/18/2018

### BASIS FOR MONUMENT LOCATION

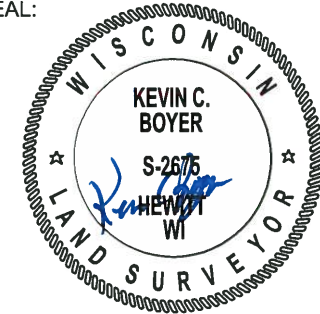
1975 - PLS 1103 RAN AN EDM/TRANSIT TRAVERSE THROUGHOUT THE ENTIRE AREA TO DETERMINE SEARCH AREAS FOR THE CORNERS IN SECTION 34. AN EXTENSIVE SEARCH REVEALED NO CONCLUSIVE EVIDENCE OF THE LOCATION OF THE ORIGINAL CORNER OR ANY SUBSEQUENT REMONUMENTATION. CALCULATED THE CORNER LOCATION EQUIDISTANT AND ON LINE BETWEEN ADJACENT SECTION CORNERS. SET A HARRISON MONUMENT AT THE CALCULATED LOCATION AND TIED OUT.

2018 - PLS 2675 FOUND A HARRISON MONUMENT 2" ABOVE THE GROUND SURFACE. FOUND NO EVIDENCE OF ANY OF THE EXISTING TIES OR WITNESSES. VERIFIED THE CORNER LOCATION TO BE NEAR ON LINE AND EQUIDISTANT BETWEEN ADJACENT SECTION CORNERS. ACCEPTED THE HARRISON MONUMENT AS THE BEST EVIDENCE OF THE CORNER LOCATION. SET 4 NEW TIES AND MEASURED TO THE TIES.



LOCATION  
(INDICATE CORNER BY "X")

SEAL:



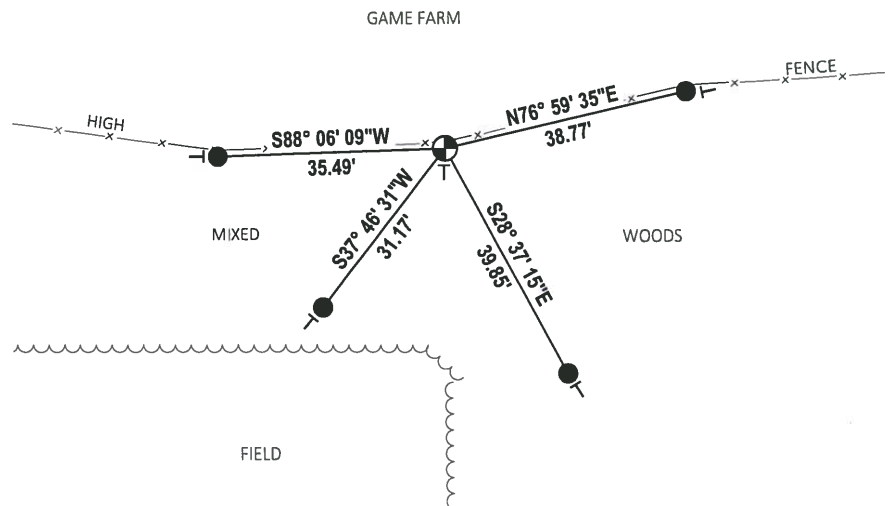
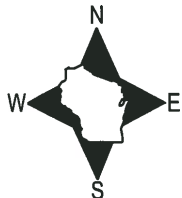
DATA SHOWN HERE ON THIS TIE SHEET IS CORRECT AND COMPLETE TO THE BEST OF MY KNOWLEDGE AND BELIEF.

PROFESSIONAL LAND SURVEYOR

DATE 12/4/2018

### - TIE SKETCH

NOTE: THE CORNER FALLS 1± SOUTH OF THE FENCE LINE.



- SET 3/4" x 18" IRON REBAR, 1.50#/FT
- ⊕ FOUND HARRISON MONUMENT
- VINYL "T" POST

ADAMS COUNTY

Survey Monument Record

TYPE OF MONUMENT: Harrison Monument (30 inches)

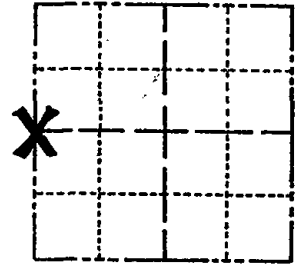
STATE PLANE COORDINATES: N \_\_\_\_\_ E \_\_\_\_\_

ELEVATION — M.S.L. DATUM: \_\_\_\_\_

THETA ANGLE: \_\_\_\_\_

FIELD BOOK: \_\_\_\_\_ PAGE \_\_\_\_\_

CORNER NO. 631  
SECTION 35  
TOWN 17  
RANGE 6



LOCATION (Indicated by 'X')

SEAL:

BASIS FOR MONUMENT LOCATION

(Use reverse side if necessary)

Show info such as: History of corner, with reference to Vol. and pg, dates, surveyor; exact description of monument replaced; if location computed, by taped or EDM traverse; landowner remarks, etc.



CERTIFIED CORRECT:

Dale C. Hagen  
Registered Land Surveyor

DATE: 3-28-75

Set corner equidistant and on line between adjacent section corners.

Ran EDM/transit traverse throughout entire area to determine search areas for the corners in this section and section 34. an extensive search revealed no conclusive evidence as to the location of the original corner or any subsequent remonumentation thereof.

- OK 3/10/80 RNS
- 11 8-9-85 D,S
- 11 Located in Panel 9-25-85 M.S
- ALL OK 2-14-90 KZ-GR
- 1 NEW 1995 GR-JG
- 1-NEW, 4-11-00 JG
- ALL OK, 3-22-05, JG OK 2-25-10 SS

TIE SKETCH

(Show at least four ties)

Rock Face of Mound

NOTE: Ties to nail and disc in trees.

