

35 SECTION 17 TOWN 06 RANGE

ADAMS COUNTY

COUNTY CORNER NO: 119
 ROMPORTOL ID: 41706352000

PUBLIC LAND SURVEY MONUMENT RECORD

TYPE OF MONUMENT: HARRISON (BROKEN-TOP)
 ADAMS COUNTY COORDINATES, NAD 83 (2007)

N. 195132.284

E. 552358.520

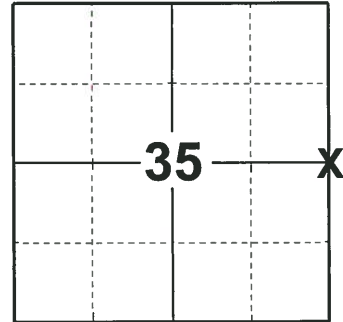
ELEVATION- _____ DATUM _____

FIELD WORK DATE: 09/20/2018

BASIS FOR MONUMENT LOCATION

1975 - PLS 1103 RAN AN EDM/TRANSIT TRAVERSE THROUGHOUT THE ENTIRE AREA TO DETERMINE SEARCH AREAS FOR THE CORNERS IN SECTIONS 34 AND 35. AN EXTENSIVE SEARCH REVEALED NO CONCLUSIVE EVIDENCE OF THE LOCATION OF THE ORIGINAL CORNER OR ANY SUBSEQUENT REMONUMENTATION. CALCULATED THE CORNER LOCATION EQUIDISTANT AND ON LINE BETWEEN ADJACENT SECTION CORNERS. SET A HARRISON MONUMENT AT THE CALCULATED LOCATION AND TIED OUT.

2018 - PLS 2675 FOUND A HARRISON MONUMENT WITH A BROKEN-TOP 12" BELOW THE GROUND SURFACE. FOUND NO EVIDENCE OF ANY OF THE EXISTING TIES OR WITNESSES. VERIFIED THE CORNER LOCATION TO BE NEAR ON LINE AND EQUIDISTANT BETWEEN ADJACENT SECTION CORNERS. ACCEPTED THE HARRISON MONUMENT WITH A BROKEN-TOP AS THE BEST EVIDENCE OF THE CORNER LOCATION. SET 4 NEW TIES AND MEASURED TO THE TIES.



LOCATION
(INDICATE CORNER BY "X")

SEAL:



DATA SHOWN HERE ON THIS TIE SHEET IS CORRECT AND COMPLETE TO THE BEST OF MY KNOWLEDGE AND BELIEF.

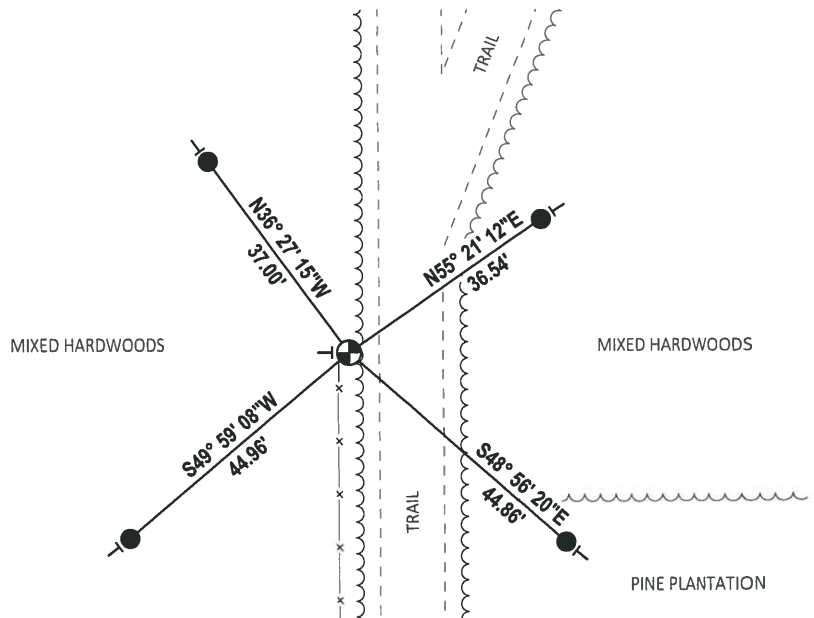
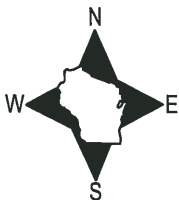
PROFESSIONAL LAND SURVEYOR

DATE 12/4/2018

TIE SKETCH

NOTE 1: THE CORNER FALLS 10'± WEST OF THE CENTERLINE OF THE TRAIL.

NOTE 2: THE CORNER FALLS 2'± EAST OF THE END OF THE FENCE.



- SET 3/4" x 18" IRON REBAR, 1.50#/FT
- ⊙ FOUND HARRISON MONUMENT (BROKEN-TOP)
- VINYL "T" POST

ADAMS COUNTY

Survey Monument Record

TYPE OF MONUMENT: Harrison Monument

STATE PLANE COORDINATES: N _____
E _____

ELEVATION — M.S.L. DATUM: _____

THETA ANGLE: _____

FIELD BOOK: _____ PAGE _____

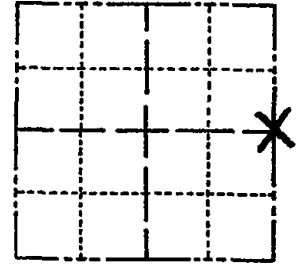
CORNER NO. 666

SECTION 35

TOWN 17

RANGE 6

119



LOCATION
(Indicated by 'X')

SEAL:



BASIS FOR MONUMENT LOCATION

(Use reverse side if necessary)

Show info such as: History of corner, with reference to Vol. and pg, dates, surveyor; exact description of monument replaced; if location computed, by taped or EDM traverse; landowner remarks, etc.

Set corner equidistant and on line between adjacent section corners.

Ran EDM/transit traverse of the entire area to determine search areas for the corners in sections 34 and 35. An extensive search revealed no conclusive evidence as to the location of the original corner or any subsequent remonumentation thereof.

TOP BROKEN: BMS OK 3/10/80 RM: SS
ENTER BY DRIVEWAY AT FIRE NO. E-812
TOP Broken - All else OK 9-25-85 SS-MB
ALL OK 2-14-90 KZ-GR
" " 2/13/95 GR-JG
ALL OK 4-11-00 - JG
ALL OK 3-2-05 - JG-JS

CERTIFIED CORRECT:

Dale C. Hagen
Registered Land Surveyor

DATE: 6/3/75

TIE SKETCH 1 NEW TIE 11-29-10 SS

(Show at least four ties)

