

31 SECTION 17 TOWN 06 RANGE

ADAMS COUNTY

COUNTY CORNER NO: 123
ROMPORTOL ID: 41706310000

PUBLIC LAND SURVEY MONUMENT RECORD

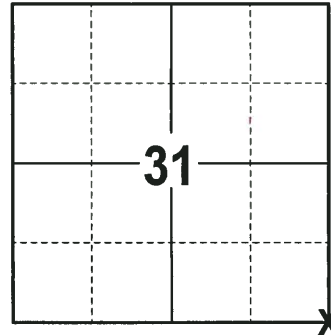
TYPE OF MONUMENT: HARRISON
ADAMS COUNTY COORDINATES, NAD 83 (2007)

N. 192358.009

E. 531240.338

ELEVATION- --- DATUM ---

FIELD WORK DATE: 11/29/2017



LOCATION
(INDICATE CORNER BY "X")

SEAL:



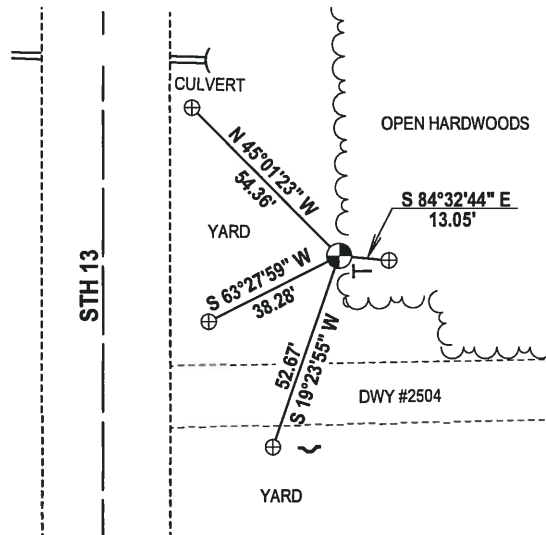
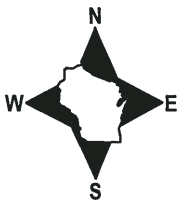
DATA SHOWN HERE ON THIS TIE SHEET IS CORRECT AND COMPLETE TO THE BEST OF MY KNOWLEDGE AND BELIEF.

PROFESSIONAL LAND SURVEYOR

DATE 12-21-17

- TIE SKETCH -

NOTE 1: THE CORNER FALLS 60± EAST OF THE CENTERLINE OF THE STH 13.
NOTE 2: ALL WITNESS ARE 2" BELOW THE YARD SURFACE.



- ⊕ WISDOT ALUMINUM CAP IN CONCRETE FOUND
- ⊙ HARRISON FOUND
- ~ STEEL FENCE POST (FIRE # 2504)
- VINYL "T" POST

