

PUBLIC LAND SURVEY MONUMENT RECORD

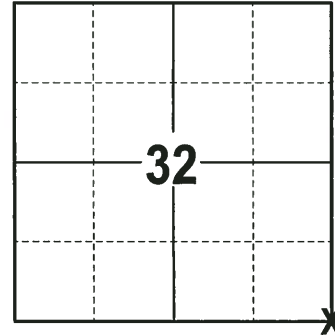
TYPE OF MONUMENT: HARRISON
 ADAMS COUNTY COORDINATES, NAD 83 (2007)

N. 192320.931

E. 536500.632

ELEVATION- _____ DATUM _____

FIELD WORK DATE: 11/27/2017



LOCATION
(INDICATE CORNER BY "X")

BASIS FOR MONUMENT LOCATION

1978 - PLS 1267 FOUND NO EVIDENCE OF BEARING TREES OR THE CORNER. THE CORNER FALLS IN A CUT AREA OF AN OLD ROAD. TRAVERSED THE SECTION BY E.D.M. AND T-2 AND SET THE CORNER BY SINGLE/PROPORTION FROM THE S1/4 OF SECTION 32 TO THE SE CORNER OF SECTION 33. SET A HARRISON MONUMENT AT THE CALCULATED LOCATION AND TIED OUT.

1981 - PLS 1478 SET A NEW HARRISON MONUMENT AT THE INTERSECTION OF THE CENTERLINES AND THE FENCE LINE EXTENDED FROM THE WEST. EXCAVATION AT THIS LOCATION YIELDED NO EVIDENCE OF ANY PREVIOUS MONUMENTATION. THIS NEW LOCATION BEST FITS ALL THE COLLATERAL EVIDENCE IN THE ADJOINING SECTIONS. NOTE, THE NEW CORNER LOCATION IS APPROXIMATELY 57' SOUTHWEST OF THE PRIOR 1978 LOCATION ESTABLISHED BY PLS 1267.

2017 - PLS 2994 FOUND A HARRISON MONUMENT SET BY PLS 1478 3" BELOW THE ROAD SURFACE, 1 TIE AND 1 WITNESS. MONUMENT AGREES WITH THE EXISTING TIE AND WITNESS. ACCEPTED THE EXISTING HARRISON MONUMENT AS THE CORNER LOCATION. SET 4 NEW TIES AND MEASURED TO THE TIES AND WITNESS.

SEAL:



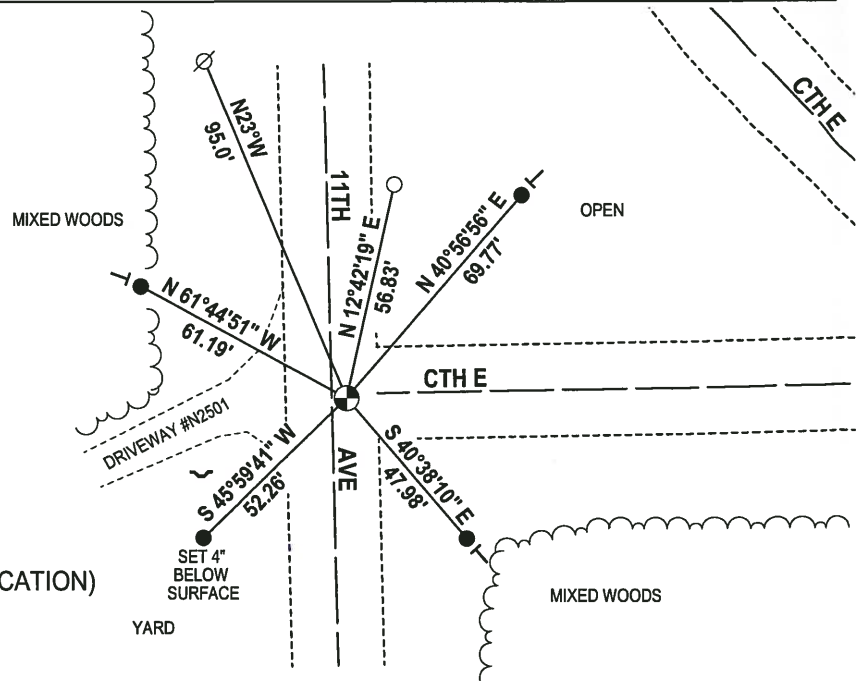
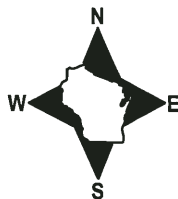
DATA SHOWN HERE ON THIS TIE SHEET IS CORRECT AND COMPLETE TO THE BEST OF MY KNOWLEDGE AND BELIEF.

PROFESSIONAL LAND SURVEYOR

DATE 12-21-17

- TIE SKETCH

NOTE: THE CORNER FALLS 4'± EAST OF THE CENTERLINE OF 11TH AVE AND 1'± SOUTH OF THE CENTERLINE OF CTH E.

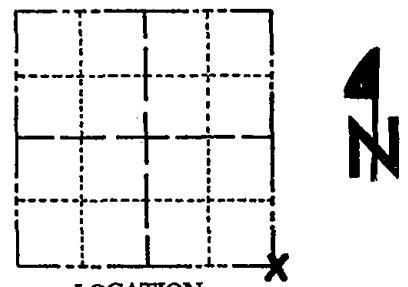


- 3/4" x 18" IRON REBAR SET, 1.50#/FT
- 3/4" IRON ROD FOUND (PREVIOUS CORNER LOCATION)
- ⊕ HARRISON FOUND
- ⊙ WITNESS POWER POLE FOUND
- ↘ STEEL FENCE POST (FIRE # SIGN)
- VINYL "T" POST

Government Land Corner Certificate

ADAMS County
 TYPE OF MONUMENT: HARRISON STANDARD
 STATE PLANE COORDINATES: N _____
 E _____
 ELEVATION — M.S.L. DATUM: _____
 THETA ANGLE: _____
 FIELD BOOK: _____ PAGE _____
 DRAWN BY: S.S.

CORNER NO. 25
 SECTION 32
 TOWN 17
 RANGE 6



LOCATION
(Indicated by 'X')

BASIS FOR MONUMENT LOCATION

Show info such as: History of corner, with reference to Vol. and pg., dates, surveyor; exact description of monument replaced; if location computed, by taped or EDM traverse; landowner remarks, etc. (Use reverse side if necessary)

Set monument at the intersection of the centerlines and the fence line extended from the west. Excavation at this location yielded no evidence of any previous monumentation. This location best fits all collateral evidence in the adjoining sections.

SEAL:



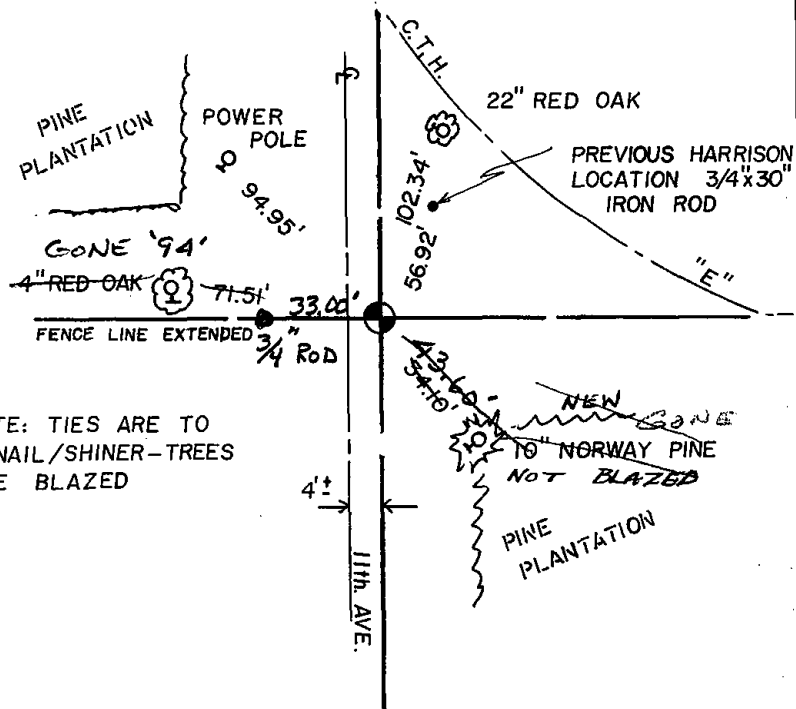
DATA SHOWN HERE ON
CERTIFIED CORRECT:

Gregory P. Rhinehart
Registered Land Surveyor

DATE: June 1, 1981

TIE SKETCH

Show at least four ties, also fence lines, roads, topo, size and type of witness trees and if off road - best way to arrive at corner.



NOTE: TIES ARE TO
PK NAIL/SHINER-TREES
ARE BLAZED

MAINTENANCE RECORD

Date	Init.	Remarks
9-25-85	SS MB	All O.K.
1-11-90	SS	OK
8-4-94	JG-BJ	1-GONE 1-NEW
2-14-08	JG	OK
1-25-05	JG	OK
1-20-10	SS	Mon OK

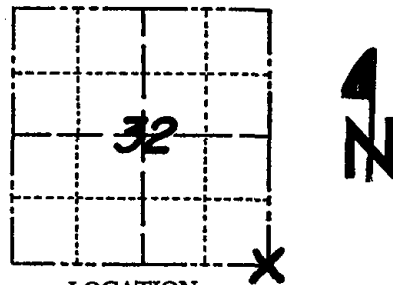
100-100-100

100-100-100

Government Land Corner Certificate

ADAMS County
 TYPE OF MONUMENT: HARRISON
 STATE PLANE COORDINATES: N _____
 E _____
 ELEVATION — M.S.L. DATUM: _____
 THETA ANGLE: _____
 FIELD BOOK: 563 PAGE 58-68
 DRAWN BY: _____

CORNER NO. 125
 SECTION 32
 TOWN 17N
 RANGE 6E



LOCATION
(Indicated by 'X')

SEAL:



DATA SHOWN HERE ON
CERTIFIED CORRECT:

Ken Schuette

Registered Land Surveyor

DATE: 21 Dec 1978

BASIS FOR MONUMENT LOCATION

Show info such as: History of corner, with reference to Vol. and pg., dates, surveyor; exact description of monument replaced; if location computed, by taped or EDM traverse; landowner remarks, etc. (Use reverse side if necessary)

SE Corner of Section 32

Found no evidence of BT's at or corner, or any evidence of Corner, as corner falls in a cut area of an old road. Traversed Section by Edm. and T-2 and set corner by single/proportion from the $S\frac{1}{4}$ of Section 32 to the SE corner of Section 33.

See New Tie sheet

TIE SKETCH

Show at least four ties, also fence lines, roads, topo, size and type of witness trees' and if off road - best way to arrive at corner.

NOTE = ALL TREES BLAZED

