

35 SECTION 17 TOWN 06 RANGE

ADAMS COUNTY

COUNTY CORNER NO: 130
 ROMPORTOL ID: 41706350020

PUBLIC LAND SURVEY MONUMENT RECORD

TYPE OF MONUMENT: HARRISON (BROKEN TOP)
 ADAMS COUNTY COORDINATES, NAD 83 (2007)

N. 192458.931
 E. 549732.175

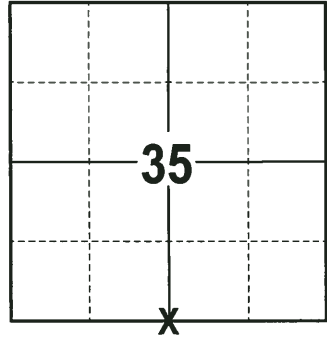
ELEVATION- _____ DATUM _____

FIELD WORK DATE: 11/21/2017

BASIS FOR MONUMENT LOCATION

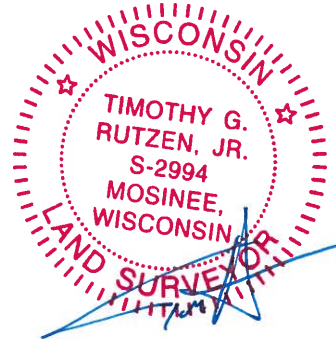
1975 - PLS 1103 SET THE CORNER EQUIDISTANT AND ONLINE BETWEEN ADJACENT SECTION CORNERS. RAN E.D.M./TRANSIT TRAVERSE OF THE ENTIRE AREA TO DETERMINE THE SEARCH AREA FOR THE CORNERS. AN EXTENSIVE SEARCH REVEALED NO CONCLUSIVE EVIDENCE AS TO THE LOCATION OF THE ORIGINAL CORNER OR ANY SUBSEQUENT REMONUMENTATION. NO EXCAVATION WITH A BACKHOE WAS DONE. SET A HARRISON MONUMENT AT THE CALCULATED LOCATION AND TIED OUT.

2017 - PLS 2994 FOUND A HARRISON MONUMENT WITH A BROKEN TOP 12" BELOW THE ROAD SURFACE AND 1 ONE TIE. THE MONUMENT AGREES WITH THE TIE. ACCEPTED THE HARRISON MONUMENT WITH A BROKEN TOP AS THE CORNER LOCATION. SET 3 NEW TIES AND MEASURED TO THE TIES.



LOCATION
 (INDICATE CORNER BY "X")

SEAL:



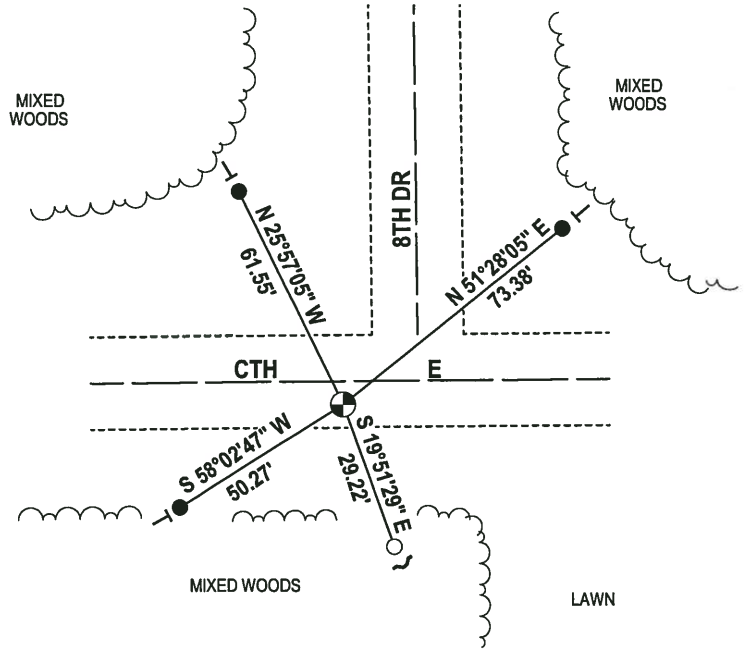
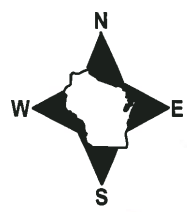
DATA SHOWN HERE ON THIS TIE SHEET IS CORRECT AND COMPLETE TO THE BEST OF MY KNOWLEDGE AND BELIEF.

PROFESSIONAL LAND SURVEYOR

DATE 12-21-17

- TIE SKETCH

NOTE: THE CORNER FALLS 6± SOUTH OF THE CTH E CENTERLINE AND 18' WEST OF THE 8TH DR CENTERLINE.



- 3/4" x 18" IRON REBAR SET, 1.50#/FT
- 1" O.D. IROD PIPE FOUND
- ⊙ HARRISON FOUND
- ↘ STEEL FENCE POST
- └ VINYL "T" POST

ADAMS COUNTY

Survey Monument Record

TYPE OF MONUMENT: Harrison Monument

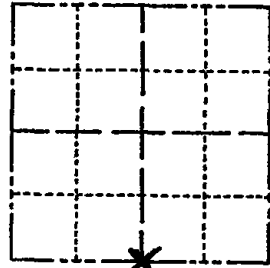
STATE PLANE COORDINATES: N _____
E _____

ELEVATION — M.S.L. DATUM: _____

THETA ANGLE: _____

FIELD BOOK: _____ PAGE _____

CORNER NO. 668⁽¹³⁰⁾
SECTION 35
TOWN 17
RANGE 6



LOCATION
(Indicated by 'X')

SEAL:

BASIS FOR MONUMENT LOCATION

(Use reverse side if necessary)

Show info such as: History of corner, with reference to Vol. and pg, dates, surveyor; exact description of monument replaced; if location computed, by taped or EDM traverse; landowner remarks, etc.

Set corner equidistant and on line between adjacent section corners.

Ran EDM/transit traverse of entire area to determine search areas for the corners. An extensive search revealed no conclusive evidence as to the location of the original corner or any subsequent remonumentation. No excavation with backhoe was done.



COR. O.K. 10-2-75 SS
" 8-11-80 RN+SS
" 9-25-85 SS+MB
2-NEW-2-GONE MON. OK 10-5-90 SS-JG
ALL OK 8-3-94 JG-BIS
ALL OK, 2-15-00, JG-SS

CERTIFIED CORRECT:

Dale C. Hagen
Registered Land Surveyor

DATE: 6/3/75

TIE SKETCH ALL OK, 3-2-05 - JG-JS

(Show at least four ties)

