

PUBLIC LAND SURVEY MONUMENT RECORD

TYPE OF MONUMENT: HARRISON
 ADAMS COUNTY COORDINATES, NAD 83 (2007)

N. 192476.060

E. 552398.314

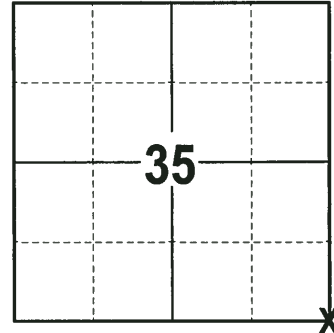
ELEVATION- _____ DATUM _____

FIELD WORK DATE: 11/21/2017

BASIS FOR MONUMENT LOCATION

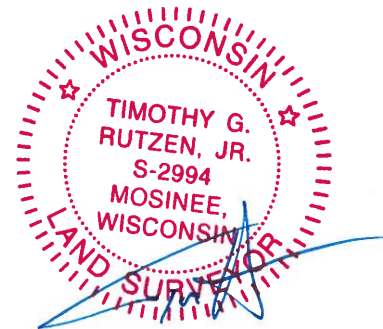
1975 - PLS 1103 RAN E.D.M./TRANSIT TRAVERSE AROUND SECTIONS 34 AND 35 AND TO THE SOUTHWEST CORNER OF SECTION 36. A SEARCH OF THE AREA REVEALED NO EVIDENCE AS TO THE LOCATION OF THE CORNER OR ANY SUBSEQUENT REMONUMENTATION. NO EXCAVATION WITH A BACKHOE WAS DONE. SET THE CORNER BY PROPORTIONATE MEASUREMENT ALONG THE SOUTH LINE OF THIS TOWNSHIP. SET A HARRISON MONUMENT AT THE CALCULATED LOCATION AND TIED OUT.

2017 - PLS 2994 FOUND A HARRISON MONUMENT 6" BELOW THE ROAD SURFACE AND 2 PROPERTY IRONS, ONE BEING A USED AS TIE. THE MONUMENT AGREES WITH THE TIE. ACCEPTED THE HARRISON MONUMENT AS THE CORNER LOCATION. SET 2 NEW TIES AND MEASURED TO THE TIES.



LOCATION
 (INDICATE CORNER BY "X")

SEAL:



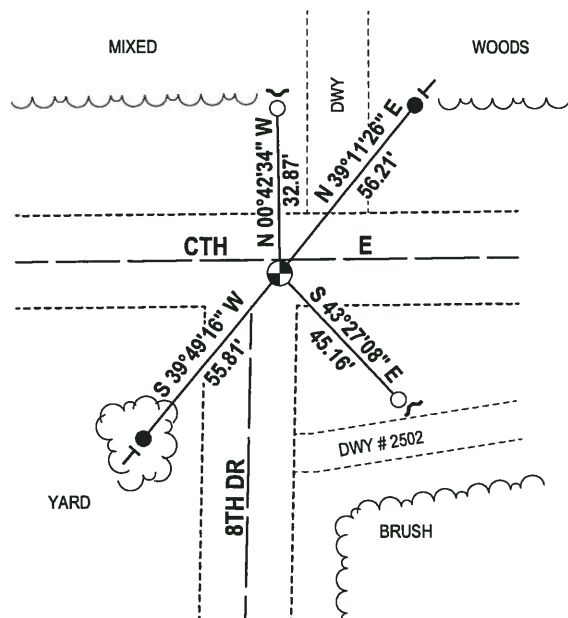
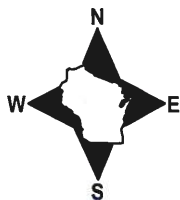
DATA SHOWN HERE ON THIS TIE SHEET IS CORRECT AND COMPLETE TO THE BEST OF MY KNOWLEDGE AND BELIEF.

PROFESSIONAL LAND SURVEYOR

DATE 12-21-17

- TIE SKETCH

NOTE: THE CORNER FALLS 4± SOUTH OF THE CENTERLINE CTH E AND 8± EAST OF CENTERLINE OF 8TH DRIVE.



- 3/4" x 18" IRON REBAR SET, 1.50#/FT
- 3/4" IRON ROD FOUND
- ⊙ HARRISON FOUND
- ✓ STEEL FENCE POST
- VINYL "T" POST

ADAMS COUNTY

Survey Monument Record

TYPE OF MONUMENT: Harrison Monument

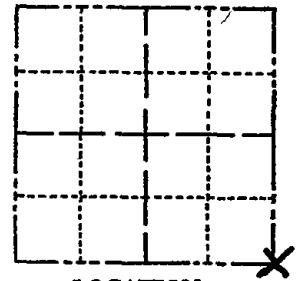
STATE PLANE COORDINATES: N _____ E _____

ELEVATION — M.S.L. DATUM: _____

THETA ANGLE: _____

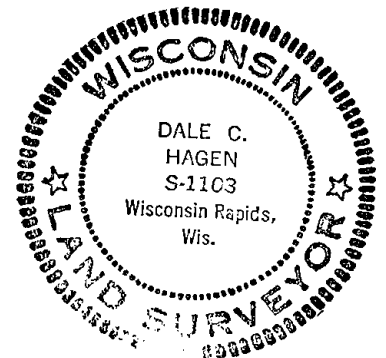
FIELD BOOK: _____ PAGE _____

CORNER NO. 667
SECTION 35
TOWN 17
RANGE 6



LOCATION (Indicated by 'X')

SEAL:



BASIS FOR MONUMENT LOCATION

(Use reverse side if necessary)

Show info such as: History of corner, with reference to Vol. and pg, dates, surveyor; exact description of monument replaced; if location computed, by taped or EDM traverse; landowner remarks, etc.

Ran EDM/transit traverse around sections 34 and 35 and to southeast corner of section 36. A search of the area revealed no evidence as to the location of the corner or any subsequent remonumentation. No excavation with backhoe was done. Set corner by proportionate measure along the South line of this township.

COR. O.K. 10-2-75 SS
" " 2/10/80 RW:SS
ALL OK 1-GONE 10-5-90 SS-JG
OK 2/13/95 CR-JG

CERTIFIED CORRECT:

Dale C. Hagen
Registered Land Surveyor

DATE: 6/3/75

TIE SKETCH 1-NEW, 3-2-05-JG-JS

OK 11-29-10 SS

(Show at least four ties)

