

PUBLIC LAND SURVEY MONUMENT RECORD

TYPE OF MONUMENT: HARRISON
 ADAMS COUNTY COORDINATES, NAD 83 (2007)

N. 192493.138

E. 555041.844

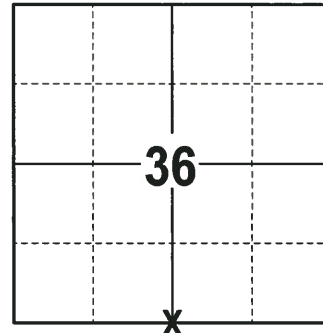
ELEVATION- _____ DATUM _____

FIELD WORK DATE: 11/21/2017

BASIS FOR MONUMENT LOCATION

1976 - PLS 1103 RAN E.D.M./TRANSIT TRAVERSE AROUND SECTIONS 34, 35, PARTS OF 36 AND ALL OF SECTION 31-17-7. FOUND NO EVIDENCE OF THE ORIGINAL CORNER OR ANY REMONUMENTATION OF THIS CORNER. SET THE CORNER BY SINGLE PROPORTIONATE MEASUREMENT ALONG THE SOUTH LINE OF SECTION 36. SET A HARRISON MONUMENT AT THE CALCULATED LOCATION AND TIED OUT.

2017 - PLS 2994 FOUND A HARRISON MONUMENT 6" BELOW THE ROAD SURFACE AND 1 PROPERTY IRON USED AS A TIE. THE MONUMENT AGREES WITH THE TIE. ACCEPTED THE HARRISON MONUMENT AS THE CORNER LOCATION. SET 3 NEW TIES AND MEASURED TO THE TIES.



LOCATION
 (INDICATE CORNER BY "X")

SEAL:

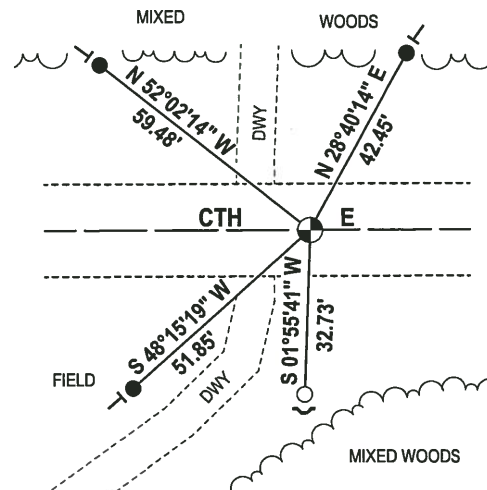
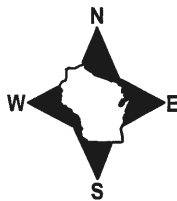


DATA SHOWN HERE ON THIS TIE SHEET IS CORRECT AND COMPLETE TO THE BEST OF MY KNOWLEDGE AND BELIEF.

PROFESSIONAL LAND SURVEYOR

DATE 12-21-17

- TIE SKETCH



- 3/4" x 18" IRON REBAR SET, 1.50#/FT
- 1-1/4" IRON ROD FOUND
- ⊕ HARRISON FOUND
- ✓ STEEL FENCE POST
- ┌ VINYL "T" POST

ADAMS COUNTY

Survey Monument Record

TYPE OF MONUMENT: Standard Harrison

STATE PLANE COORDINATES: N _____
E _____

ELEVATION — M.S.L. DATUM: _____

THETA ANGLE: _____

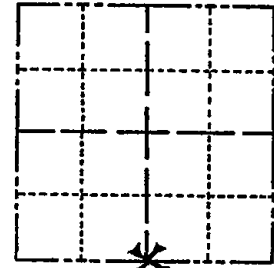
FIELD BOOK: _____ PAGE _____

CORNER NO. 903

SECTION 36

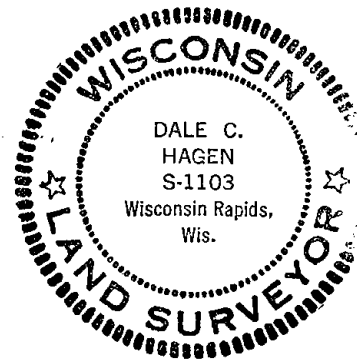
TOWN 17 N

RANGE 6 E



LOCATION
(Indicated by 'X')

SEAL:



BASIS FOR MONUMENT LOCATION

(Use reverse side if necessary)

Show info such as: History of corner, with reference to Vol. and pg. dates, surveyor; exact description of monument replaced; if location computed, by taped or EDM traverse; landowner remarks, etc.

Ran EDM/transit traverse around Sections 34, 35, parts of 36. and all of section 31-17-7.

Could find no evidence of the original corner or any remonumentation of this corner.

Set corner by single proportionate measure along the South line of Section 36.

NOT HARRISON - NR SPIKE
3/11/80 RN-SS
OK - 9-25-85 SS-MB
2-NEW - 2 GONE 10-5-90 SS-JG
OK 2-13-95 GL-56
ALL OK, 2-15-00, JG-SS

CERTIFIED CORRECT:

Dale C Hagen

Registered Land Surveyor

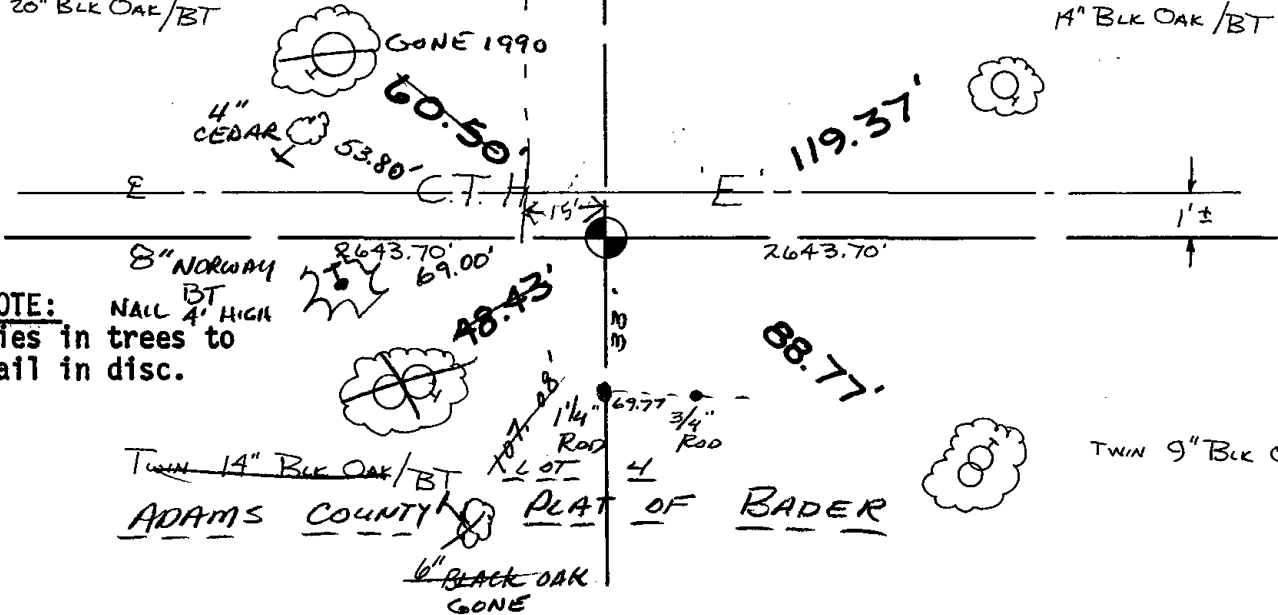
DATE: January 23, 1976

TIE SKETCH 1-GONE, 1-NEW, 3-2-05-JG-JS
OR 11-29-10 SS

(Show at least four ties)

20" BLK OAK / BT

14" BLK OAK / BT



NOTE: Ties in trees to nail in disc.

TWIN 14" BLK OAK / BT
ADAMS COUNTY PLAT OF BADER
6" BLACK OAK GONE