

PUBLIC LAND SURVEY MONUMENT RECORD

TYPE OF MONUMENT: HARRISON
ADAMS COUNTY COORDINATES, NAD 83 (2007)

N. 224617.129

E. 588837.685

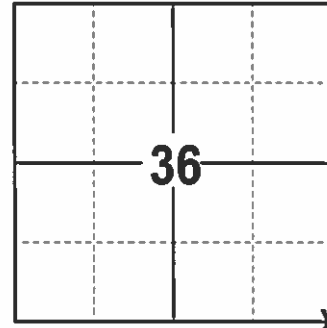
ELEVATION- _____ DATUM _____

FIELD WORK DATE: 1/11/2017

BASIS FOR MONUMENT LOCATION

1974 - PLS 878 REPLACED A 1" IRON PIPE WITH A HARRISON. 1" IRON PIPE WAS SET BY PLS 878 FOR THE BREISE SURVEY. THE LOCATION WAS DETERMINED BY A TRAVERSE OF THE SECTION.

2017 - PLS 2994 FOUND A HARRISON 2 INCHES BELOW THE ROAD SURFACE AND 2 EXISTING TIES. THE HARRISON AGREES WITH EXISTING TIES. ACCEPTED HARRISON AND SET 2 NEW TIES AND REMEASURED TO THE EXISTING TIES.



LOCATION
(INDICATE CORNER BY "X")

SEAL:



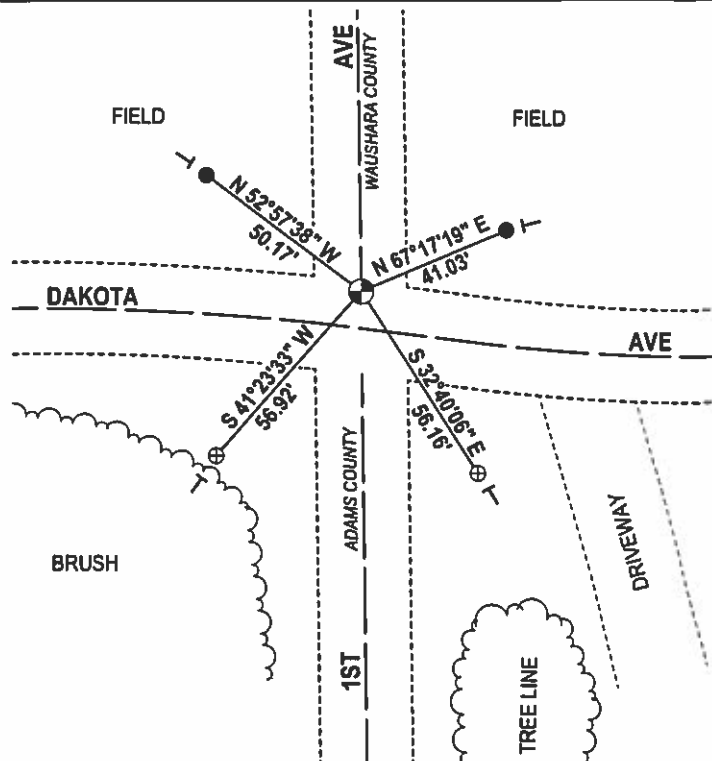
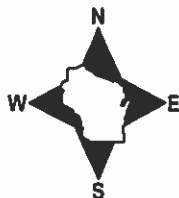
DATA SHOWN HERE ON THIS TIE SHEET IS CORRECT AND COMPLETE TO THE BEST OF MY KNOWLEDGE AND BELIEF.

PROFESSIONAL LAND SURVEYOR

DATE 3/15/17

- TIE SKETCH

NOTE: THE CORNER FALLS 9'± NORTH OF THE CENTERLINE OF DAKOTA AVE.



- 3/4" x 18" IRON REBAR SET, 1.50#/FT
- ⊕ 2" OD IRON PIPE WITH CAP FOUND
- ⊙ HARRISON FOUND
- VINYL "T" POST

ADAMS COUNTY

Survey Monument Record

CORNER NO. 391
 SECTION 1
 TOWN 17
 RANGE 7

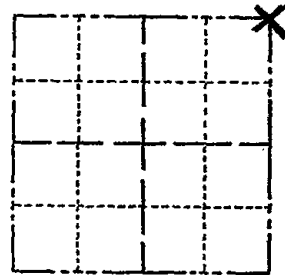
TYPE OF MONUMENT: Harrison Standard

STATE PLANE COORDINATES: N _____
E _____

ELEVATION — M.S.L. DATUM: _____

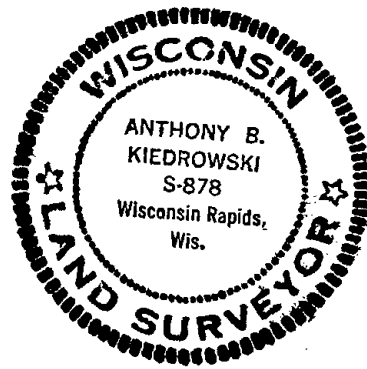
THETA ANGLE: _____

FIELD BOOK: _____ PAGE _____



LOCATION
(Indicated by 'X')

SEAL:



BASIS FOR MONUMENT LOCATION

(Use reverse side if necessary)

Show info such as: History of corner, with reference to Vol. and pg, dates, surveyor; exact description of monument replaced; if location computed, by taped or EDM traverse; landowner remarks, etc.

Replaced 1" pipe set by me in the Breide survey. Location determined by traverse of section.

CERTIFIED CORRECT:

Registered Land Surveyor
DATE: 6/12/74

CORNER O.K. 3-28-77 GR-SS
 CORNER OK 3-25-82 GR-SS
 2 NEW TIES 1-23-87 JL-SS
 1-NEW, 1-GONE 1-3-92 GR-56
 1-GONE, 4 TIES REMAIN 1-22-97 JG-SS
 1-GONE, CHECK MARQUETTE CO. TIE SHEET JG-1-14-02
 OK " " " " 9-19-07-JG

TIE SKETCH OK 01/26/12 MS

(Show at least four ties)

Ties are to nail and disc,

