

04  
SECTION

17  
TOWN

07  
RANGE

# ADAMS COUNTY

COUNTY CORNER NO: 17  
ROMPORTOL ID: 41707042000

## PUBLIC LAND SURVEY MONUMENT RECORD

TYPE OF MONUMENT: HARRISON  
ADAMS COUNTY COORDINATES, NAD 83 (2007)

N. 221599.201

E. 573007.322

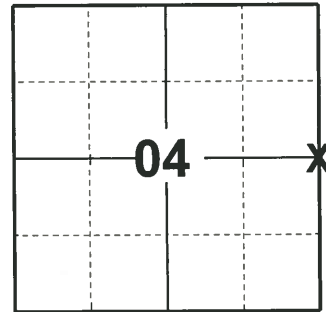
ELEVATION-      -      -      DATUM      -      -     

FIELD WORK DATE: 03/26/2019

### BASIS FOR MONUMENT LOCATION

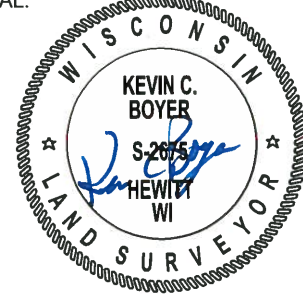
1980 - PLS 878 DUG FOR CORNER. COULD FIND NO EVIDENCE OF A MONUMENT OR ANY RESURVEYS IN AREA. SET CORNER PROPORTIONATE MEASUREMENT BETWEEN SECTION CORNERS ON A STRAIGHT LINE IN ACCORDANCE WITH ORIGINAL NOTES OF RECORD. EDM EQUIPMENT.

2019 - PLS 2675 FOUND HARRISON MONUMENT 4" BELOW THE ROAD SURFACE AND 1 WITNESS. THE MONUMENT AGREES WITH THE EXISTING WITNESS. ACCEPTED THE HARRISON AS THE CORNER LOCATION. SET 3 NEW TIES AND MEASURED TO A FOUND PROPERTY IRON AND THE EXISTING WITNESS.



LOCATION  
(INDICATE CORNER BY "X")

SEAL:



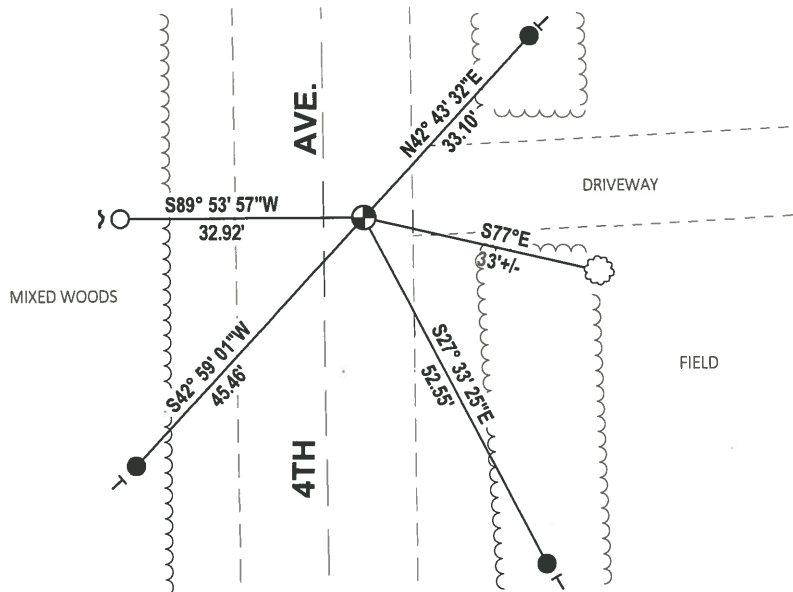
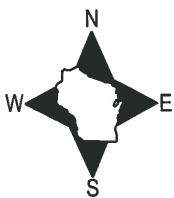
DATA SHOWN HERE ON THIS TIE SHEET IS CORRECT AND COMPLETE TO THE BEST OF MY KNOWLEDGE AND BELIEF.

PROFESSIONAL LAND SURVEYOR

DATE 5/1/19

### - TIE SKETCH

NOTE: THE CORNER LANDS 4.3'± EAST OF 4TH AVE. CENTERLINE.

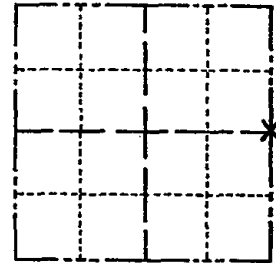


- SET 3/4" x 18" IRON REBAR, 1.50#/FT
- FOUND 3/4" IRON ROD
- ⊕ FOUND HARRISON MONUMENT
- ~ STEEL FENCE POST
- ├ VINYL "T" POST
- ⊗ WITNESS TREE

# Government Land Corner Certificate

ADAMS County  
 TYPE OF MONUMENT: HARRISON  
 STATE PLANE COORDINATES: N \_\_\_\_\_  
 E \_\_\_\_\_  
 ELEVATION — M.S.L. DATUM: \_\_\_\_\_  
 THETA ANGLE: \_\_\_\_\_  
 FIELD BOOK: 57 PAGE 118  
 DRAWN BY: R. NUBER

CORNER NO. 17  
 SECTION 4  
 TOWN 17  
 RANGE 7



LOCATION  
(Indicated by 'X')

SEAL:



DATA SHOWN HERE ON  
CERTIFIED CORRECT:

Anthony B. Kiedrowski  
Registered Land Surveyor

DATE: 8/5/80

CLAYD S

## TIE SKETCH

Show at least four ties, also fence lines, roads, topo, size and type of witness trees' and if off road - best way to arrive at corner.

