

03
SECTION

17
TOWN

07
RANGE

ADAMS COUNTY

COUNTY CORNER NO: 18

ROMPORTOL ID: 41707032000

PUBLIC LAND SURVEY MONUMENT RECORD

TYPE OF MONUMENT: HARRISON
ADAMS COUNTY COORDINATES, NAD 83 (2007)

N. 221588.711

E. 578296.758

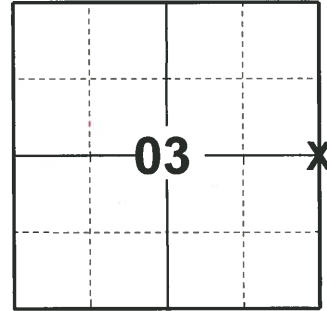
ELEVATION- _____ DATUM _____

FIELD WORK DATE: 03/25/2019

BASIS FOR MONUMENT LOCATION

1981 - PLS 584 CORNER SET PROPORTIONATE BETWEEN THE SECTION CORNER TO THE NORTH AND THE SECTION CORNER TO THE SOUTH, AND ON LINE. NOTE: NO EVIDENCE COULD BE FOUND BECAUSE OF PLOWED FIELDS ALL AROUND AND ROAD CONSTRUCTION.

2019 - PLS 2675 FOUND HARRISON 2" BELOW THE ROAD SURFACE, 1 TIE, AND 1 WITNESS. THE MONUMENT AGREES WITH THE EXISTING TIE AND WITNESS. ACCEPTED THE HARRISON AS THE CORNER LOCATION. SET 3 NEW TIES AND MEASURED TO THE EXISTING TIE AND WITNESS.



LOCATION
(INDICATE CORNER BY "X")

SEAL:



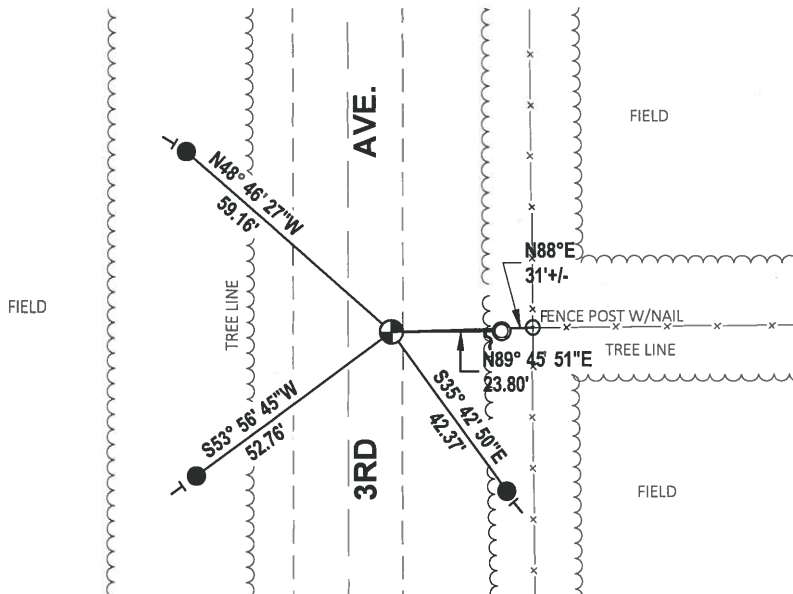
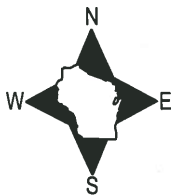
DATA SHOWN HERE ON THIS TIE SHEET IS CORRECT AND COMPLETE TO THE BEST OF MY KNOWLEDGE AND BELIEF.

PROFESSIONAL LAND SURVEYOR

DATE 5/1/19

TIE SKETCH

NOTE: THE CORNER FALLS 9.4'± EAST OF 3RD AVE. CENTERLINE.

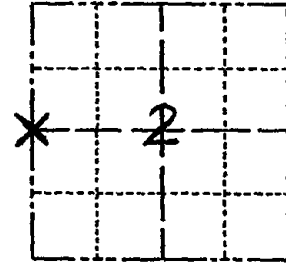


- SET 3/4" x 18" IRON REBAR, 1.50#/FT
- FOUND 1-1/4" O.D. IRON PIPE
- ⊕ FOUND HARRISON MONUMENT
- ~ STEEL FENCE POST
- ┌ VINYL "T" POST

Government Land Corner Certificate

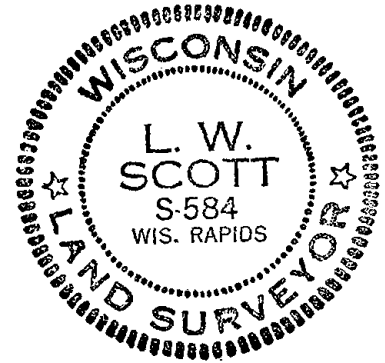
ADAMS County
 TYPE OF MONUMENT: Harrison
 STATE PLANE COORDINATES: N _____
 E _____
 ELEVATION — M.S.L. DATUM: _____
 THETA ANGLE: _____
 FIELD BOOK: 57 PAGE 142
 DRAWN BY: T.H.

CORNER NO. 18
 SECTION 2
 TOWN 17
 RANGE 7



LOCATION
(Indicated by 'X')

SEAL:



DATA SHOWN HERE ON
CERTIFIED CORRECT:

L. W. Scott
Registered Land Surveyor

DATE: 1/6/81

TIE SKETCH

Show at least four ties, also fence lines, roads, topo, size and type of witness trees and if off road - best way to arrive at corner.

