

PUBLIC LAND SURVEY MONUMENT RECORD

TYPE OF MONUMENT: HARRISON
 ADAMS COUNTY COORDINATES, NAD 83 (2007)

N. 221609.002

E. 583583.710

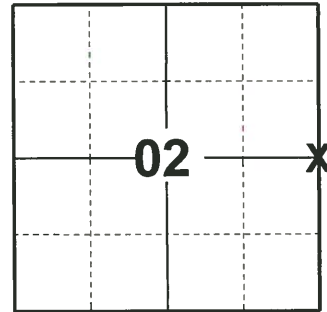
ELEVATION- _____ DATUM _____

FIELD WORK DATE: 03/20/2019

BASIS FOR MONUMENT LOCATION

1981 - PLS 584 FOUND OLD BT STUMP SCRIBED 1/4S (BELIEVED TO BE SET BY SMITH IN EARLY 1900'S). SCALPED THE TOP SOIL IN THE AREA WHERE SMITH SAID HE FOUND THE CORNER AND SET THE BT. SOIL ROCK AND SAND STONE. DID NOT FIND ANY EVIDENCE OF CORNER. SET THE CORNER AT THE RECORDED DISTANCE FROM BT CORNER. FELL CLOSE TO LINE AND PROPORTIONED BETWEEN SECTION CORNERS TO THE NORTH AND SOUTH.

2019 - PLS 2675 FOUND HARRISON MONUMENT FLUSH WITH GROUND SURFACE AND 2 WITNESS TREES. MONUMENT AGREES WITH BOTH WITNESS TREES. ACCEPTED HARRISON MONUMENT AS CORNER LOCATION. SET 4 NEW TIES AND MEASURED TO EXISTING WITNESS TREES.



LOCATION
 (INDICATE CORNER BY "X")

SEAL:



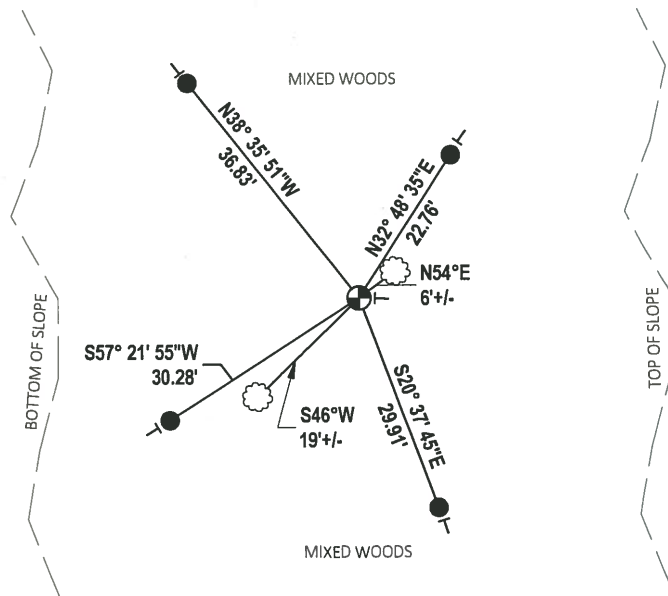
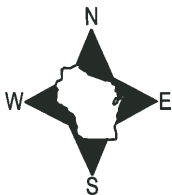
DATA SHOWN HERE ON THIS TIE SHEET IS CORRECT AND COMPLETE TO THE BEST OF MY KNOWLEDGE AND BELIEF.

PROFESSIONAL LAND SURVEYOR

DATE 5/1/19

- TIE SKETCH

NOTE: CORNER LANDS 1600± EAST OF CTH G



- SET 3/4" x 18" IRON REBAR, 1.50#/FT
- ⊕ FOUND HARRISON MONUMENT
- VINYL "T" POST
- ⊗ WITNESS TREE

