

PUBLIC LAND SURVEY MONUMENT RECORD

TYPE OF MONUMENT: HARRISON (BROKEN TOP)
ADAMS COUNTY COORDINATES, NAD 83 (2007)

N. 221656.529

E. 588853.133

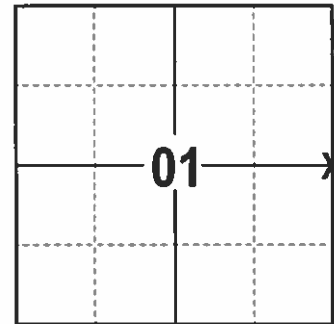
ELEVATION- --- --- DATUM --- ---

FIELD WORK DATE: 1/12/2017

BASIS FOR MONUMENT LOCATION

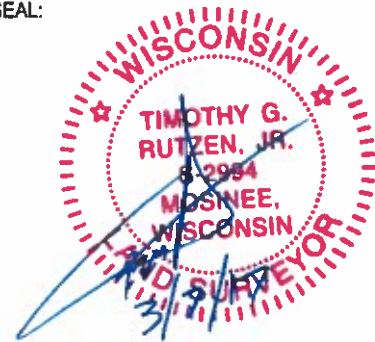
1974 - PLS 878 REPLACED A 2 INCH IRON PIPE SET BY HIMSELF FOR THE BREISE SURVEY. THE ENTIRE SECTION WAS TRAVERSED AND THE LOCATION WAS VERIFIED.

2017 - PLS 2994 FOUND EXISTING HARRISON WITH A BROKEN TOP 12 INCHES BELOW THE SURFACE AND 2 EXISTING WITNESSES. THE HARRISON AGREES WITH EXISTING WITNESSES. ACCEPTED HARRISON AND SET 4 NEW TIES.



LOCATION
(INDICATE CORNER BY "X")

SEAL:



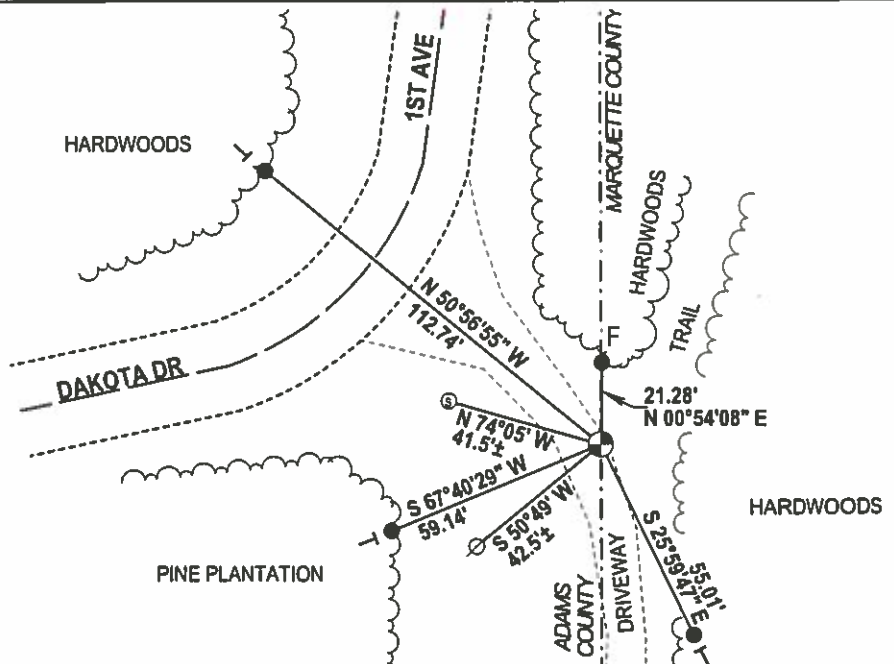
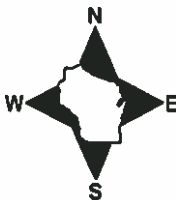
DATA SHOWN HERE ON THIS TIE SHEET IS CORRECT AND COMPLETE TO THE BEST OF MY KNOWLEDGE AND BELIEF.

PROFESSIONAL LAND SURVEYOR

DATE 3/7/17

- TIE SKETCH -

NOTE: THE CORNER FALLS 76'± SOUTHEAST OF THE CENTERLINE OF 1ST AVE.



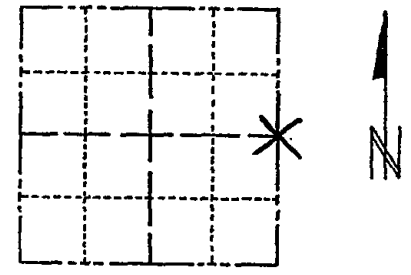
- 3/4" x 18" IRON REBAR SET, 1.50#/FT
- ⊕ FOUND HARRISON
- ⊗ FOUND WITNESS POWER POLE
- ⊙ FOUND WITNESS STREET SIGN
- T VINYL "T" POST
- ⊠ FIRE NUMBER POST

ADAMS COUNTY

CORNER NO. 394
 SECTION 1
 TOWN 17
 RANGE 7

Survey Monument Record

TYPE OF MONUMENT: Harrison standard
 STATE PLANE COORDINATES: N _____
 E _____
 ELEVATION — M.S.L. DATUM: _____
 THETA ANGLE: _____
 FIELD BOOK: _____ PAGE _____



LOCATION
(Indicated by 'X')

BASIS FOR MONUMENT LOCATION

(Use reverse side if necessary)

Show info such as: History of corner, with reference to Vol. and pg, dates, surveyor; exact description of monument replaced; if location computed, by taped or EDM traverse; landowner remarks, etc.

SEAL:



Replaced 2" iron pipe set by me for the Breise survey. Entire section traversed and location verified.

This point is believed to be on a straight line equidistant between section corners.

CORNER O.K. 3-28-77 GR-SS
 " " 1-23-87 JL-SS
 " " 1-3-92 GR-56
 2 NEW TIES 11-18-96 JC-SS
 CORNER OK 2-21-02 -56
 OK 01-26-12 MS

CERTIFIED CORRECT:

Anthony B. Kiedrowski
 Registered Land Surveyor

DATE: 6/3/74

TIE SKETCH

(Show at least four ties)

Ties to nail and cap.

