

PUBLIC LAND SURVEY MONUMENT RECORD

TYPE OF MONUMENT: HARRISON (BROKEN-TOP)
 ADAMS COUNTY COORDINATES, NAD 83 (2007)

N. 218970.958

E. 559822.374

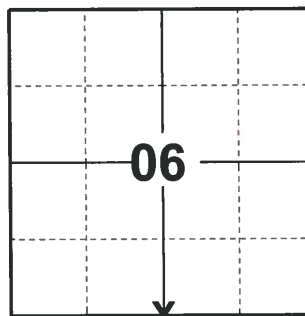
ELEVATION- DATUM

FIELD WORK DATE: 03/28/2019

BASIS FOR MONUMENT LOCATION

1982 - PLS 1444 CORNER WAS SET AT SINGLE PROPORTIONATE MEASURE BETWEEN SECTION CORNERS. NO OTHER EVIDENCE COULD BE FOUND FOR THE LOCATION OF THIS CORNER.

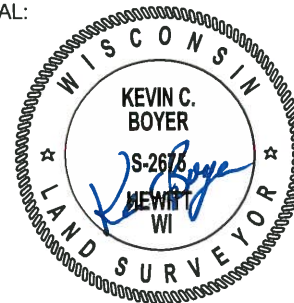
2019 - PLS 2675 FOUND HARRISON (BROKEN-TOP) 8" BELOW THE GROUND AND 3 TIES. THE MONUMENT AGREES WITH ALL 3 TIES. ACCEPTED THE HARRISON (BROKEN-TOP) AS THE CORNER LOCATION. SET 2 NEW TIES AND MEASURED TO THE EXISTING TIES.



LOCATION

(INDICATE CORNER BY "X")

SEAL:



DATA SHOWN HERE ON THIS TIE SHEET IS CORRECT AND COMPLETE TO THE BEST OF MY KNOWLEDGE AND BELIEF.

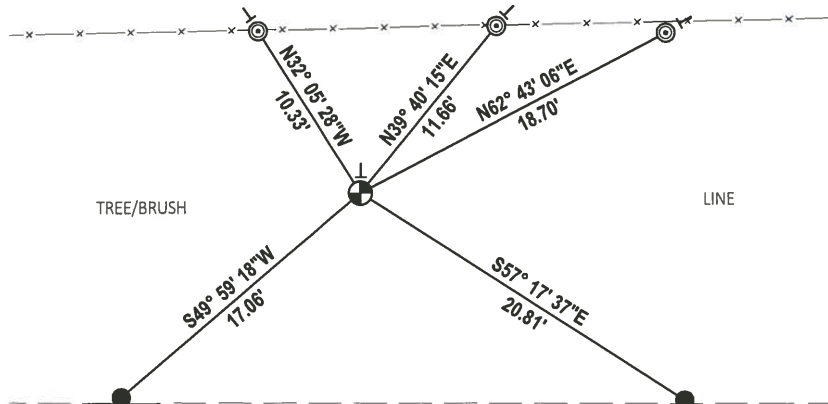
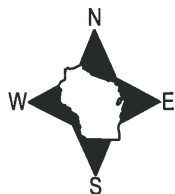
PROFESSIONAL LAND SURVEYOR

DATE 5/1/19

TIE SKETCH

NOTE: CORNER FALLS 52"± SOUTH OF TRAIL.

NOTE: REBAR SET 24" BELOW THE GROUND SURFACE.

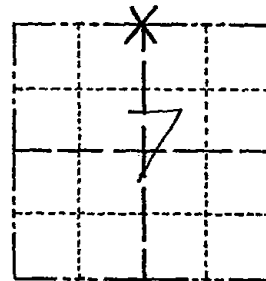


- SET 3/4" x 18" IRON REBAR, 1.50#/FT
- ⊙ FOUND 2-3/8" O.D. IRON PIPE
- ⊕ FOUND HARRISON (BROKEN-TOP) MONUMENT
- VINYL "T" POST

Government Land Corner Certificate

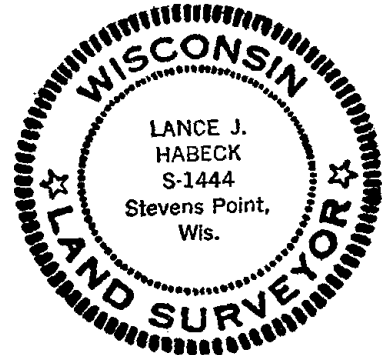
ADAMS County
 TYPE OF MONUMENT: HARRISON
 STATE PLANE COORDINATES: N _____
 E _____
 ELEVATION — M.S.L. DATUM: _____
 THETA ANGLE: _____
 FIELD BOOK: 92 PAGE 118
 DRAWN BY: SJH

CORNER NO. 22
 SECTION 7
 TOWN 17
 RANGE 7



LOCATION
(Indicated by 'X')

SEAL:



This corner was set at single proportionate measure between section corners. No other evidence could be found for the location of this corner.

DATA SHOWN HERE ON
CERTIFIED CORRECT:

Lance J. Habeck
Registered Land Surveyor

DATE: 9/29/82

TIE SKETCH

Show at least four ties, also fence lines, roads, topo, size and type of witness trees and if off road - best way to arrive at corner.

