

PUBLIC LAND SURVEY MONUMENT RECORD

TYPE OF MONUMENT: HARRISON
 ADAMS COUNTY COORDINATES, NAD 83 (2007)

N. 218934.957

E. 562466.767

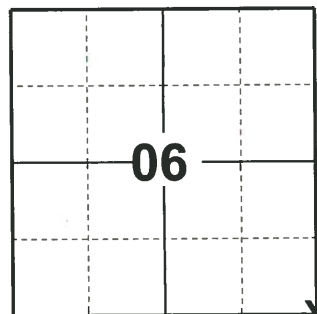
ELEVATION- _____ DATUM _____

FIELD WORK DATE: 03/27/2019

BASIS FOR MONUMENT LOCATION

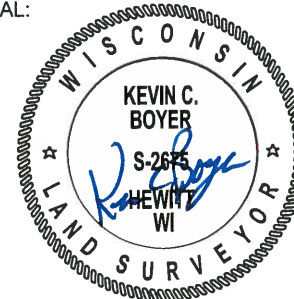
1980 - PLS 878 FOUND A 1-1/2" ANGLE IRON, REPLACED IT WITH A HARRISON MONUMENT. LOCATION ACCEPTED AS THE CORRECT AFTER A THOROUGH COMPARISON OF ORIGINAL NOTES, AND A TRAVERSE OF SECTION 5, 6, 7, 8. NO RESURVEYS WERE OF RECORD.

2019 - PLS 2675 FOUND HARRISON FLUSH WITH THE GROUND AND 3 WITNESSES. THE MONUMENT AGREES WITH THE 3 WITNESSES. ACCEPTED THE HARRISON AS THE CORNER LOCATION. SET 4 NEW TIES AND MEASURED TO THE EXISTING WITNESSES.



LOCATION
 (INDICATE CORNER BY "X")

SEAL:



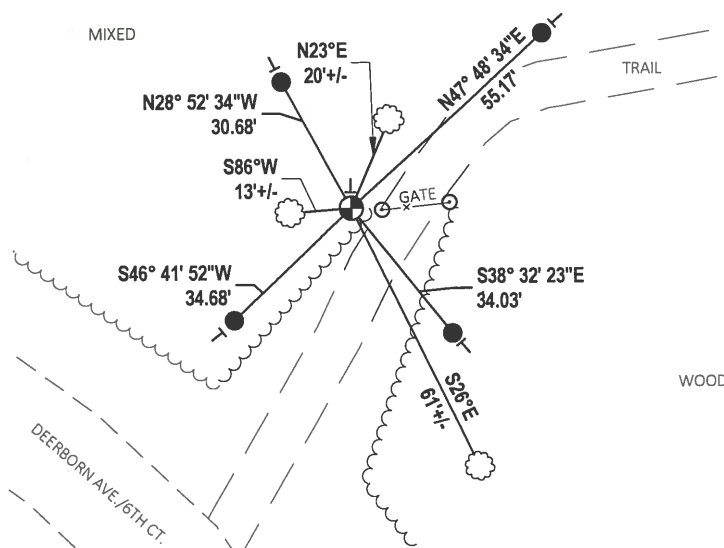
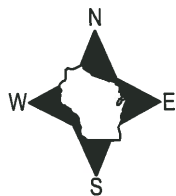
DATA SHOWN HERE ON THIS TIE SHEET IS CORRECT AND COMPLETE TO THE BEST OF MY KNOWLEDGE AND BELIEF.

PROFESSIONAL LAND SURVEYOR

DATE 5/1/19

- TIE SKETCH

NOTE: THE CORNER FALLS 83.5± NORTHEAST OF DEERBORN AVE./6TH CT. CENTERLINE.

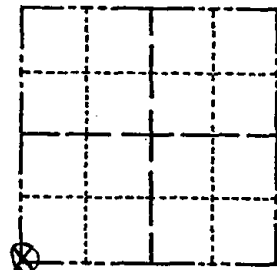


- SET 3/4" x 18" IRON REBAR, 1.50#/FT
- ⊕ FOUND HARRISON MONUMENT
- VINYL "T" POST
- ☼ WITNESS TREE

Government Land Corner Certificate

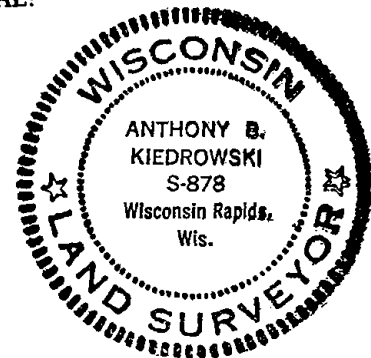
ADAMS County
 TYPE OF MONUMENT: HARRISON
 STATE PLANE COORDINATES: N _____
 E _____
 ELEVATION — M.S.L. DATUM: _____
 THETA ANGLE: _____
 FIELD BOOK: 83 PAGE 103
 DRAWN BY: PAUL KIEDROWSKI

CORNER NO. 23
 SECTION 5
 TOWN 17
 RANGE 7



LOCATION
(Indicated by 'X')

SEAL:



DATA SHOWN HERE ON
CERTIFIED CORRECT:

Anthony B. Kiedrowski
Registered Land Surveyor

DATE: 5/3/ 80

BASIS FOR MONUMENT LOCATION

Show info such as: History of corner, with reference to Vol. and pg., dates, surveyor; exact description of monument replaced; if location computed, by taped or EDM traverse; landowner remarks, etc. (Use reverse side if necessary)

Found a 1½" angle iron, replaced it with a Harrison monument. Location accepted as correct after a thorough comparison of original notes, and a traverse of section 5,6,7,8. No resurveys were of record.

TIE SKETCH

Show at least four ties, also fence lines, roads, topo, size and type of witness trees and if off road - best way to arrive at corner.

