

PUBLIC LAND SURVEY MONUMENT RECORD

TYPE OF MONUMENT: HARRISON
 ADAMS COUNTY COORDINATES, NAD 83 (2007)

N. 218933.516

E. 565097.585

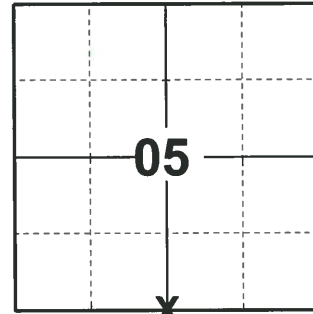
ELEVATION- _____ DATUM _____

FIELD WORK DATE: 03/28/2019

BASIS FOR MONUMENT LOCATION

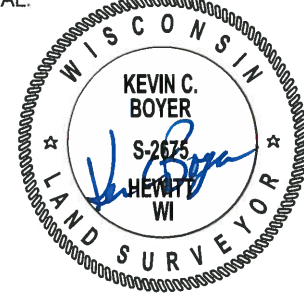
1982 - PLS 1444 CORNER WAS SET EQUIDISTANT AND ON LINE BETWEEN SECTION CORNERS. NO EVIDENCE OF ORIGINAL BEARING TREES OR CORNER WAS FOUND AND NO EVIDENCE OF ANY RESURVEY CORNER WAS FOUND.

2019 - PLS 2675 FOUND HARRISON FLUSH WITH THE GROUND AND 4 TIES. THE MONUMENT AGREES WITH ALL 4 TIES. ACCEPTED THE HARRISON AS THE CORNER LOCATION AND MEASURED TO THE EXISTING TIES.



LOCATION
 (INDICATE CORNER BY "X")

SEAL:



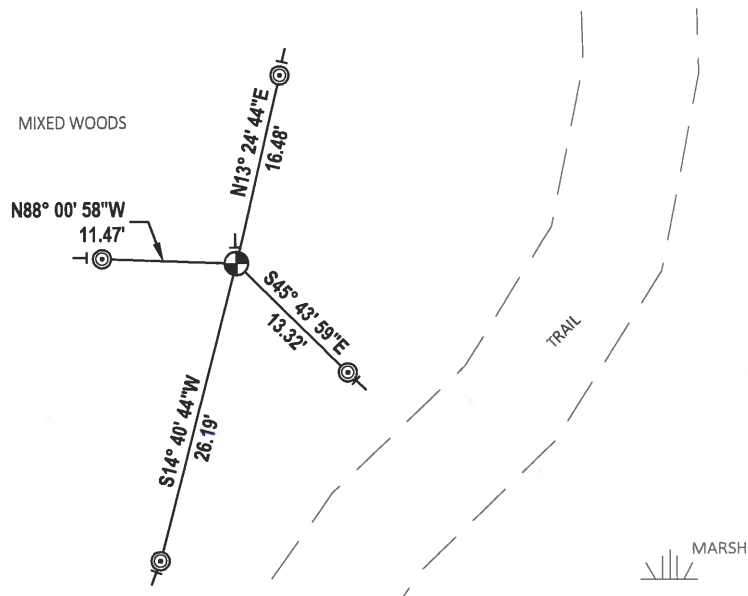
DATA SHOWN HERE ON THIS TIE SHEET IS CORRECT AND COMPLETE TO THE BEST OF MY KNOWLEDGE AND BELIEF.

PROFESSIONAL LAND SURVEYOR

DATE 5/1/19

TIE SKETCH

NOTE: THE CORNER FALLS 25'± WEST OF TRAIL.

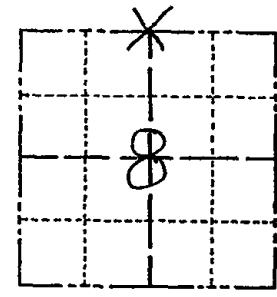


- ⊙ FOUND 2-3/8" O.D. IRON PIPE
- ⊕ FOUND HARRISON MONUMENT
- VINYL "T" POST

Government Land Corner Certificate

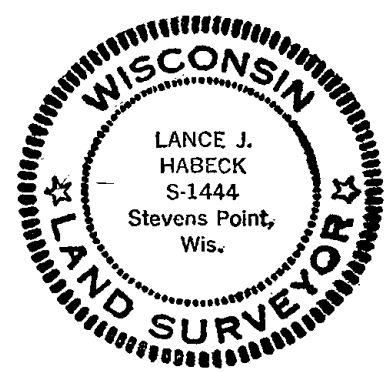
ADAMS County
 TYPE OF MONUMENT: HARRISON
 STATE PLANE COORDINATES: N 43°58'00.5"
 HANG FIELD W 89°41'17.5"
 ELEVATION — M.S.L. DATUM: _____
 THETA ANGLE: _____
 FIELD BOOK: 92 PAGE 115
 DRAWN BY: SJH.

CORNER NO. 24
 SECTION 8
 TOWN 17
 RANGE 7



LOCATION
 (Indicated by 'X')

SEAL:



DATA SHOWN HERE ON
 CERTIFIED CORRECT:

Lance J. Habeck
 Registered Land Surveyor

DATE: 9/29/82

BASIS FOR MONUMENT LOCATION

Show info such as: History of corner, with reference to Vol. and pg., dates, surveyor; exact description of monument replaced; if location computed, by taped or EDM traverse; landowner remarks, etc. (Use reverse side if necessary)

Corner was set equidistant and on line between section corners. No evidence of original bearing trees or corner was found and no evidence of any resurvey corner was found.

TIE SKETCH

Show at least four ties, also fence lines, roads, topo, size and type of witness trees and if off road - best way to arrive at corner.

