

05  
SECTION

17  
TOWN

07  
RANGE

# ADAMS COUNTY

COUNTY CORNER NO: 25  
ROMPORTOL ID: 41707050000

## PUBLIC LAND SURVEY MONUMENT RECORD

TYPE OF MONUMENT: HARRISON  
ADAMS COUNTY COORDINATES, NAD 83 (2007)

N. 218932.295

E. 567728.072

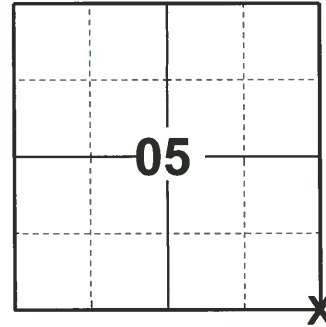
ELEVATION- \_\_\_\_\_ DATUM \_\_\_\_\_

FIELD WORK DATE: 03/26/2019

### BASIS FOR MONUMENT LOCATION

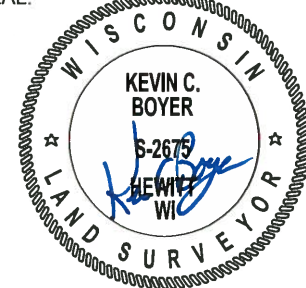
1974 - PLS 1103 EXCAVATED BY HAND IN AREA OF INTERSECTION OF ANCIENT FENCE LINES. FOUND NO EVIDENCE OF CORNER OR ACCESSORIES. RAN EDM/TRANSIT TRAVERSE OF SECTION 9 AND FIELD EVIDENCE IN ADJACENT SECTION. USING THIS DATA AND THE ORIGINAL AND RE-SURVEY NOTES. THE LOCATION OF THE NORTHWEST CORNER OF SECTION 9 WAS DETERMINED AND MONUMENTED.

2019 - PLS 2675 FOUND HARRISON MONUMENT 4" ABOVE THE GROUND AND 3 WITNESSES. THE MONUMENT AGREES WITH ALL 3 WITNESSES. ACCEPTED THE HARRISON MONUMENT AS THE CORNER LOCATION. SET 4 NEW TIES AND MEASURED TO THE EXISTING WITNESSES.



LOCATION  
(INDICATE CORNER BY "X")

SEAL:



DATA SHOWN HERE ON THIS TIE SHEET IS CORRECT AND COMPLETE TO THE BEST OF MY KNOWLEDGE AND BELIEF.

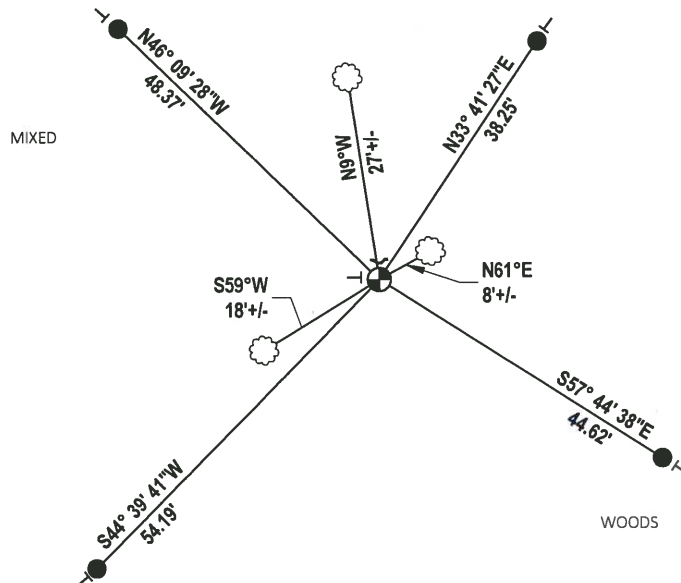
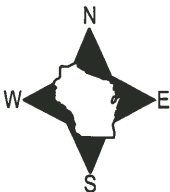
PROFESSIONAL LAND SURVEYOR

DATE 5/1/19

### TIE SKETCH

NOTE: THE CORNER FALLS 100'± WEST OF A TREE LINE AND 300'± NORTH OF A FIELD.

NOTE: ENTER DRIVEWAY YELLOW HOUSE #2013, TAKE TRAIL WEST TO FIELD WITH POND, NW TO TRAIL.



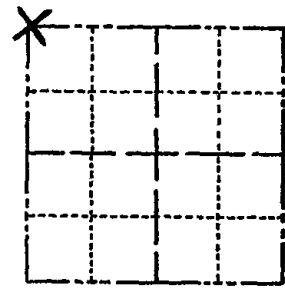
- SET 3/4" x 18" IRON REBAR, 1.50#/FT
- ⊕ FOUND HARRISON MONUMENT
- ~ STEEL FENCE POST
- VINYL "T" POST
- ☁ WITNESS TREE

ADAMS COUNTY

Survey Monument Record

CORNER NO. 456  
SECTION 9  
TOWN 17  
RANGE 7

TYPE OF MONUMENT: Harrison Standard  
STATE PLANE COORDINATES: N 43° 58' 00.4"  
HAND HELD - NAV - E W 89° 40' 41.7"  
ELEVATION - M.S.L. DATUM:  
THETA ANGLE:  
FIELD BOOK: PAGE



LOCATION (Indicated by 'X')

BASIS FOR MONUMENT LOCATION

(Use reverse side if necessary)

Show info such as: History of corner, with reference to Vol. and pg, dates, surveyor; exact description of monument replaced; if location computed, by taped or EDM traverse; landowner remarks, etc.

SEAL:

Excavated by hand in area of intersection of ancient fence lines. Found no evidence of corner or accessories.

Ran EDM/transit traverse of Section 9 and field evidence in adjacent section. Using this data and the original and re-survey notes, the location of the Northwest corner of Section 9 was determined and monumented.



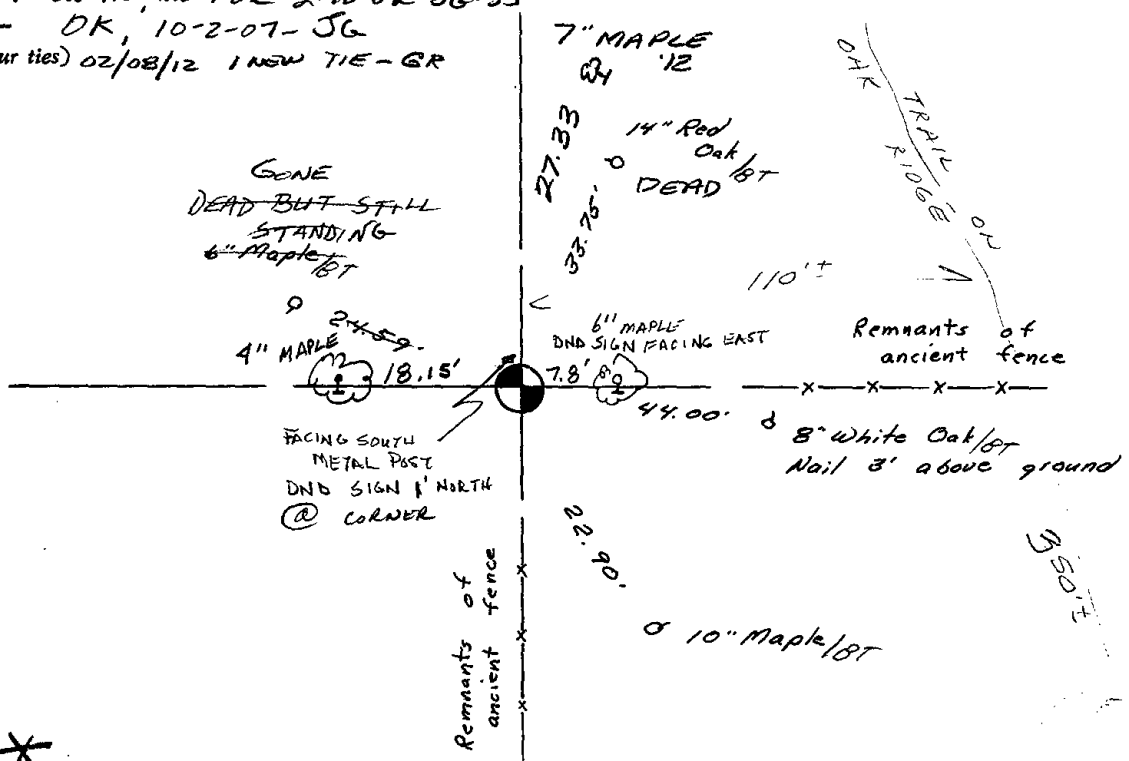
CORNER	O.K.	3-28-77	GR-SS
"	"	8-24-82	SS
"	"	3-17-87	SS
"	"	6-2-92	JG
I-NEW TIE, MON O.K		5-8-97	JG

CERTIFIED CORRECT:

Dale C. Hagen  
Registered Land Surveyor

DATE: June 28, 1974

TIE SKETCH I-NEW TIE, MON. OK 2-18-02 JG-SS  
DK, 10-2-07-JG  
(Show at least four ties) 02/08/12 I NEW TIE - GR



(ENTER DRIVEWAY YELLOW HOUSE #2013, TAKE TRAIL WEST TO FIELD WITH POND, NW TO TRAIL)