

PUBLIC LAND SURVEY MONUMENT RECORD

TYPE OF MONUMENT: HARRISON
 ADAMS COUNTY COORDINATES, NAD 83 (2007)

N. 218939.669

E. 570385.500

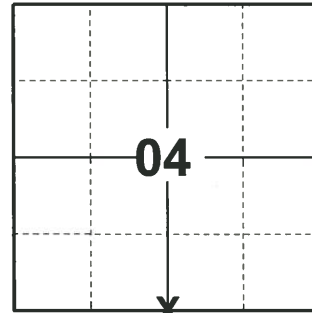
ELEVATION- DATUM

FIELD WORK DATE: 03/26/2019

BASIS FOR MONUMENT LOCATION

1974 - PLS 1103 EXCAVATION WITH BACK-HOE YIELDED NO EVIDENCE OF AN ORIGINAL OR REPLACEMENT MONUMENT FOR THE THE NORTH QUARTER CORNER OF SECTION 9. RAN EDM/TRANSIT TRAVERSE OF SECTION 9 AND SET QUARTER CORNER EQUIDISTANT AND ON LINE BETWEEN NORTHWEST AND NORTHEAST SECTION CORNERS.

2019 - PLS 2675 FOUND HARRISON 4" BELOW THE ROAD SURFACE AND 1 TIE. THE MONUMENT AGREES WITH THE TIE. ACCEPTED THE HARRISON AS THE CORNER LOCATION. SET 3 NEW TIES AND MEASURED TO THE EXISTING TIE.



LOCATION

(INDICATE CORNER BY "X")

SEAL:



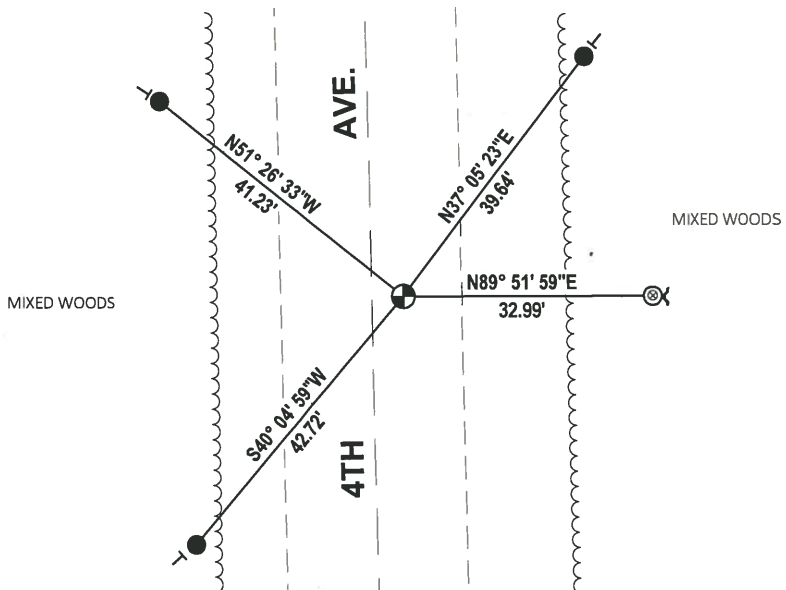
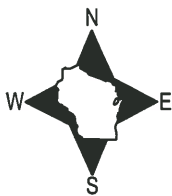
DATA SHOWN HERE ON THIS TIE SHEET IS CORRECT AND COMPLETE TO THE BEST OF MY KNOWLEDGE AND BELIEF.

PROFESSIONAL LAND SURVEYOR

DATE 5/1/19

TIE SKETCH

NOTE: THE CORNER LANDS 4.2'± EAST OF 4TH AVE. CENTERLINE.



- SET 3/4" x 18" IRON REBAR, 1.50#/FT
- ⊗ FOUND 1-1/2" O.D. IRON PIPE
- ⊕ FOUND HARRISON MONUMENT
- ┌ STEEL FENCE POST
- └ VINYL "T" POST

ADAMS COUNTY

Survey Monument Record

TYPE OF MONUMENT: 30" Harrison (Standard)

STATE PLANE COORDINATES: N _____

E _____

ELEVATION — M.S.L. DATUM: _____

THETA ANGLE: _____

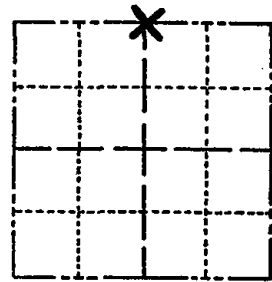
FIELD BOOK: _____ PAGE _____

CORNER NO. 457

SECTION 9

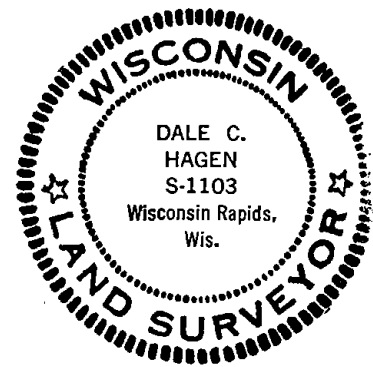
TOWN 17

RANGE 7



LOCATION
(Indicated by 'X')

SEAL:



CERTIFIED CORRECT:

Dale C. Hagen
Registered Land Surveyor

DATE: June 28, 1974

BASIS FOR MONUMENT LOCATION

(Use reverse side if necessary)

Show info such as: History of corner, with reference to Vol. and pg, dates, surveyor; exact description of monument replaced; if location computed, by taped or EDM traverse; landowner remarks, etc.

Excavation with back-hoe yielded no evidence of an original or replacement monument for the North Quarter corner of Section 9.

Ran EDM/transit traverse of Section 9 and set Quarter corner equidistant and on line between Northwest and Northeast Section corners.

CORNER	O.K.	3-14-77	GR-SS
"	"	5-26-82	SS-PK
"	"	1-23-87	JL-SS
"	"	1-3-92	GR-FG
1-NEWTIE, MON. OK		5-8-97	JG

TIE SKETCH

OK 2-20-02 - JG
OK, 9-12-07 - JG

OK 2-20-12 MS

(Show at least four ties)

