

## PUBLIC LAND SURVEY MONUMENT RECORD

TYPE OF MONUMENT: HARRISON  
 ADAMS COUNTY COORDINATES, NAD 83 (2007)

N. 218949.110

E. 575687.432

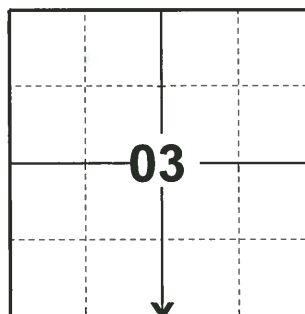
ELEVATION-        DATUM       

FIELD WORK DATE: 03/25/2019

### BASIS FOR MONUMENT LOCATION

1980 - PLS 584 NO EVIDENCE FOUND IN THIS AREA. PLOWED FIELD ON ALL SIDES. CORNER WAS SET ON LINE BETWEEN THE SECTION CORNER AND HALF-WAY.

2019 - PLS 2675 FOUND HARRISON 18" BELOW THE GROUND SURFACE AND 1 TIE. THE MONUMENT DOES NOT AGREE WITH THE TIE, HOWEVER MONUMENT WAS VERIFIED TO BE ON A NEAR STRAIGHT LINE AND EQUIDISTANT BETWEEN THE SOUTHWEST AND SOUTHEAST CORNERS OF SECTION 3. ACCEPTED THE HARRISON AS THE CORNER LOCATION. SET 3 NEW TIES AND MEASURED TO THE EXISTING TIE.



**LOCATION**  
 (INDICATE CORNER BY "X")

SEAL:



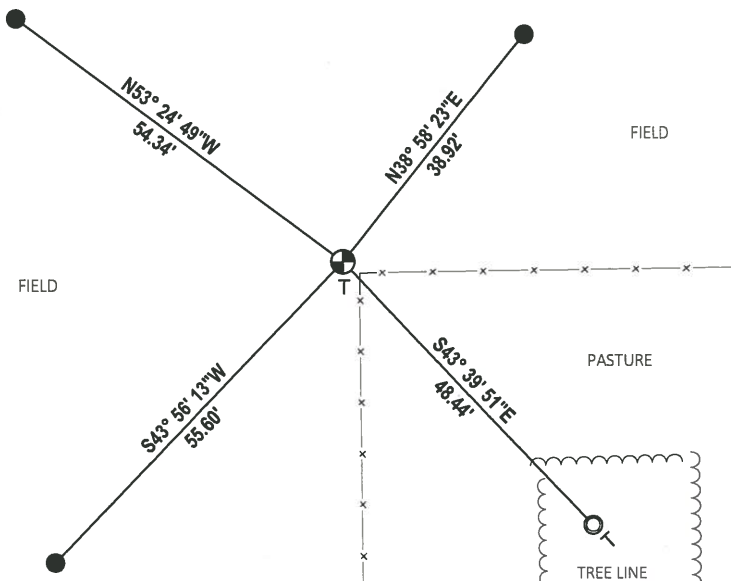
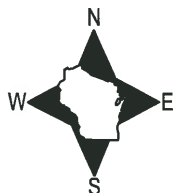
DATA SHOWN HERE ON THIS TIE SHEET IS CORRECT AND COMPLETE TO THE BEST OF MY KNOWLEDGE AND BELIEF.

PROFESSIONAL LAND SURVEYOR

DATE 5/1/19

### TIE SKETCH

NOTE: SET REBAR DOWN 18" BELOW THE GROUND SURFACE.

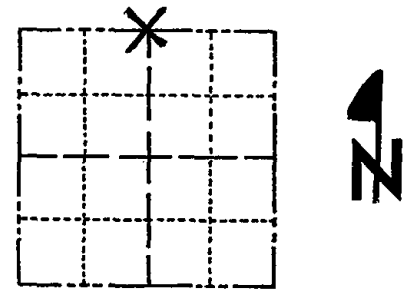


- SET 3/4" x 18" IRON REBAR, 1.50#/FT
- FOUND 1-1/4" O.D. IRON PIPE
- ⊕ FOUND HARRISON MONUMENT
- x- VINYL "T" POST

# Government Land Corner Certificate

ADAMS County  
 TYPE OF MONUMENT: HARRISON  
 STATE PLANE COORDINATES: N \_\_\_\_\_  
 E \_\_\_\_\_  
 ELEVATION — M.S.L. DATUM: \_\_\_\_\_  
 THETA ANGLE: \_\_\_\_\_  
 FIELD BOOK: 87 PAGE 129  
 DRAWN BY: S. HAUMSCHILD

CORNER NO. 28  
 SECTION 10  
 TOWN 17  
 RANGE 7



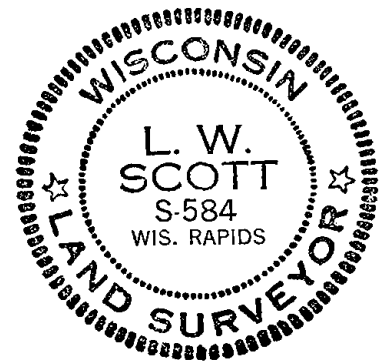
LOCATION (Indicated by 'X')

## BASIS FOR MONUMENT LOCATION

Show info such as: History of corner, with reference to Vol. and pg., dates, surveyor; exact description of monument replaced; if location computed, by taped or EDM traverse; landowner remarks, etc. (Use reverse side if necessary)

No evidence found in this area. Plowed field on all sides. Corner was set on line between the Section corners and half-way.

SEAL:



DATA SHOWN HERE ON CERTIFIED CORRECT:

*L. W. Scott*  
Registered Land Surveyor

DATE: 12/18/80

## TIE SKETCH

Show at least four ties, also fence lines, roads, topo, size and type of witness trees and if off road - best way to arrive at corner.

