

02
SECTION

17
TOWN

07
RANGE

ADAMS COUNTY

COUNTY CORNER NO: 31

ROMPORTOL ID: 41707020000

PUBLIC LAND SURVEY MONUMENT RECORD

TYPE OF MONUMENT: HARRISON
ADAMS COUNTY COORDINATES, NAD 83 (2007)

N. 218980.743

E. 583602.118

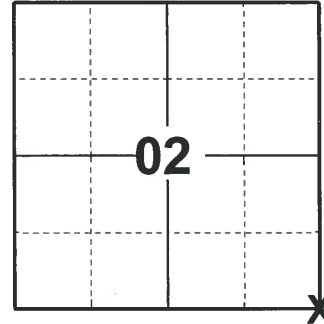
ELEVATION- DATUM

FIELD WORK DATE: 03/20/2019

BASIS FOR MONUMENT LOCATION

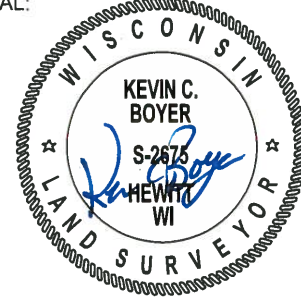
1979 - PLS 878 REPLACED 2" IRON PIPE WITH STANDARD HARRISON. ENTIRE SECTION TRAVERSED AND LOCATION VERIFIED.

2019 - PLS 2675 FOUND HARRISON MONUMENT 6" BELOW THE ROAD SURFACE AND 2 TIES. MONUMENT AGREES WITH EXISTING TIES. ACCEPTED THE HARRISON MONUMENT AS THE CORNER LOCATION. SET 2 NEW TIES AND MEASURED TO THE EXISTING TIES.



LOCATION
(INDICATE CORNER BY "X")

SEAL:



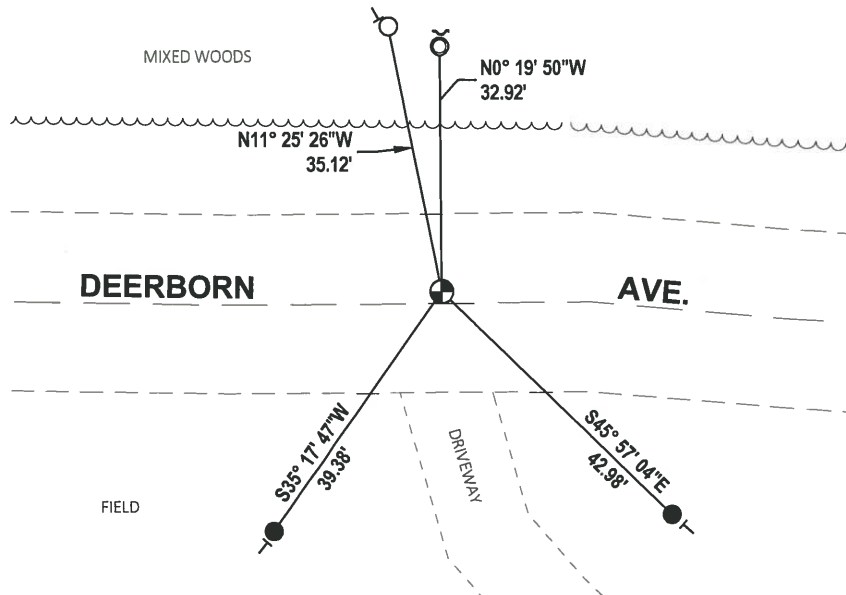
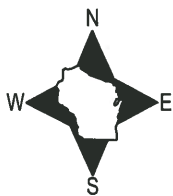
DATA SHOWN HERE ON THIS TIE SHEET IS CORRECT AND COMPLETE TO THE BEST OF MY KNOWLEDGE AND BELIEF.

PROFESSIONAL LAND SURVEYOR

DATE 5/1/19

- TIE SKETCH

NOTE: THE CORNER FALLS 1.6± NORTH OF DEERBORN AVE. CENTERLINE.



- SET 3/4" x 18" IRON REBAR, 1.50#/FT
- FOUND 3/4" IRON ROD
- ⊙ FOUND 1-1/4" O.D. IRON PIPE
- ⊕ FOUND HARRISON MONUMENT
- ↙ STEEL FENCE POST
- └ VINYL "T" POST

ADAMS COUNTY

CORNER NO. 396

Survey Monument Record

SECTION 12

TYPE OF MONUMENT: Harrison standard

TOWN 17

STATE PLANE COORDINATES: N _____

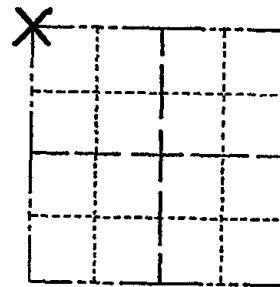
RANGE 7

E _____

ELEVATION — M.S.L. DATUM: _____

THETA ANGLE: _____

FIELD BOOK: _____ PAGE _____



LOCATION
(Indicated by 'X')

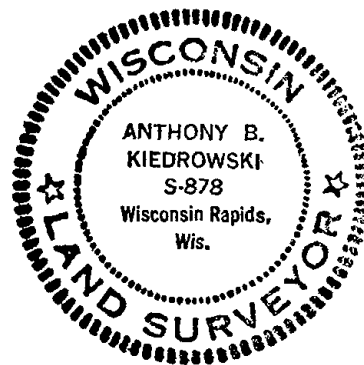
SEAL:

BASIS FOR MONUMENT LOCATION

(Use reverse side if necessary)

Show info such as: History of corner, with reference to Vol. and pg, dates, surveyor; exact description of monument replaced; if location computed, by taped or EDM traverse; landowner remarks, etc.

Replaced 2" iron pipe set by me for the Briese survey. Entire section traversed and location verified.



CORNER	O.K.	3-14-77	GR-SS
"	"	6-1-82	PK-SS
"	"	1-23-87	JL-SS
"	"	1-3-92	GR-JG

(- NEW MON OK - 10/28/97 JG

CORNER OK 2-21-02 - JG

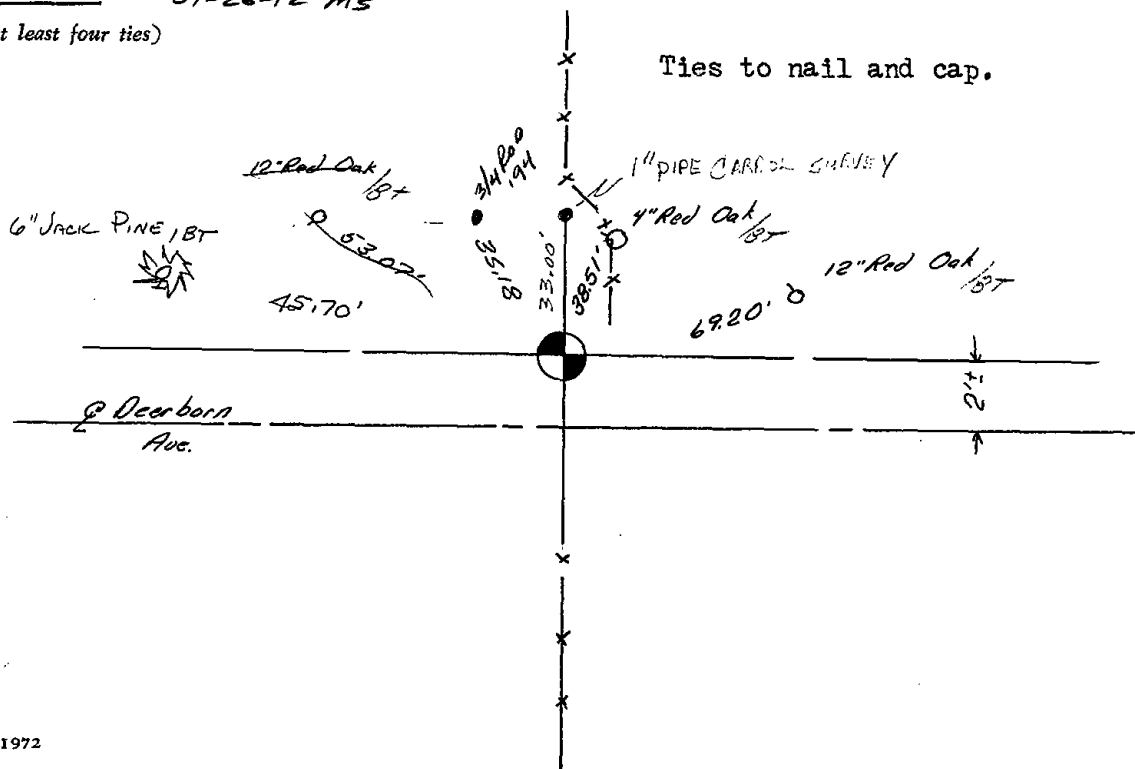
CERTIFIED CORRECT:

Anthony B. Kiedrowski
Registered Land Surveyor

DATE: 6/3/78

TIE SKETCH OK 9-19-07-JG 01-26-12 MS

(Show at least four ties)



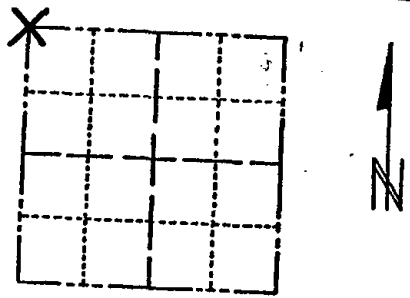
ADAMS COUNTY

(31)

Survey Monument Record

CORNER NO. 396
 SECTION 12
 TOWN 17
 RANGE 7

TYPE OF MONUMENT: Harrison standard
 STATE PLANE COORDINATES: N _____
 E _____
 ELEVATION — M.S.L. DATUM: _____
 THETA ANGLE: _____
 FIELD BOOK: _____ PAGE _____



LOCATION
(Indicated by 'X')

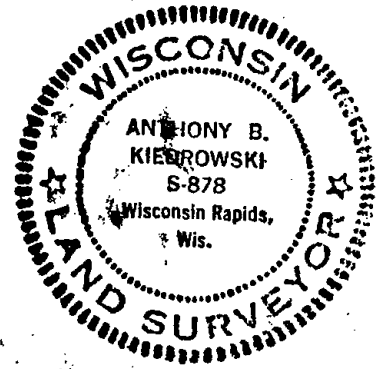
BASIS FOR MONUMENT LOCATION

(Use reverse side if necessary)

Show info such as: History of corner, with reference to Vol. and pg, dates, surveyor; exact description of monument replaced; if location computed, by taped or EDM traverse; landowner remarks, etc.

Replaced 2" iron pipe set by me for the Brice survey. Entire section traversed and location verified.

SEAL:



CERTIFIED CORRECT:

Anthony B. Kiebrovski
 Registered Land Surveyor

DATE: 6/3/78

CORNER	0.1	3-14-87	GA-SS
"	"	6-1-87	PK-SS
"	"	1-23-87	JL-SS
"	"	1-3-92	GR-JC

TIE SKETCH

(Show at least four ties)

