

## PUBLIC LAND SURVEY MONUMENT RECORD

TYPE OF MONUMENT: HARRISON  
 ADAMS COUNTY COORDINATES, NAD 83 (2007)

N. 219004.127

E. 586234.390

ELEVATION-      -      -      DATUM      -      -     

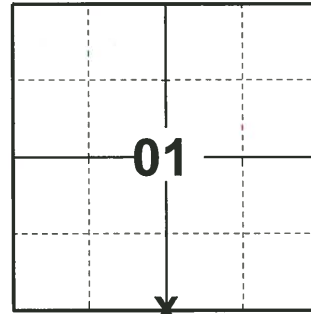
FIELD WORK DATE: 03/20/2019

### BASIS FOR MONUMENT LOCATION

1981 - PLS 878 NO RECORD OF RESURVEY. CORNER EVIDENCE DESTROYED BY ROAD CONSTRUCTION. CORNER IS SET HALF-WAY AND EQUIDISTANT BETWEEN SECTION CORNERS.

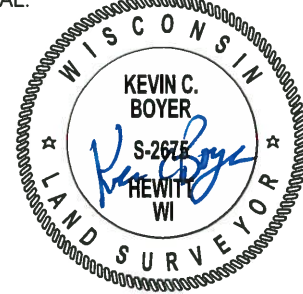
1992 - PLS 1321 FOUND HARRISON MONUMENT IN GOOD SHAPE. RETIED OUT TO TIES.

2019 - PLS 2675 FOUND HARRISON MONUMENT 2" BELOW ROAD SURFACE AND 3 TIES. MONUMENT AGREES WITH ALL 3 TIES. ACCEPTED HARRISON AS CORNER LOCATION. MEASURED TO 2 FOUND PROPERTY IRONS AND EXISTING TIES.



**LOCATION**  
 (INDICATE CORNER BY "X")

SEAL:



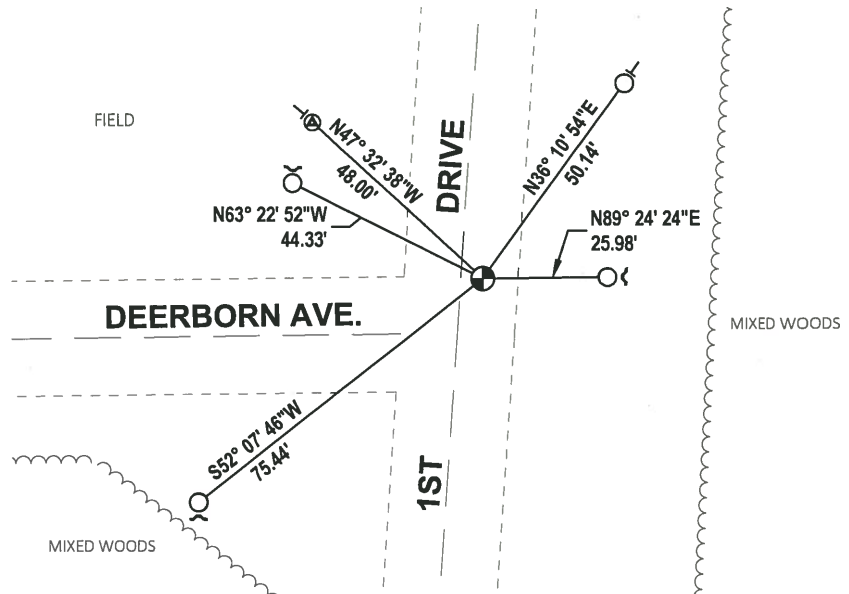
DATA SHOWN HERE ON THIS TIE SHEET IS CORRECT AND COMPLETE TO THE BEST OF MY KNOWLEDGE AND BELIEF.

PROFESSIONAL LAND SURVEYOR

DATE 5/1/19

### TIE SKETCH

NOTE: THE CORNER FALLS 4± EAST OF 1ST DRIVE CENTERLINE.



- ⊗ FOUND ADAMS CO. WITNESS WITH CAP
- FOUND 3/4" IRON ROD
- ⊕ FOUND HARRISON MONUMENT
- ┌ STEEL FENCE POST
- └ VINYL "T" POST

# U. S. PUBLIC LAND SURVEY MONUMENT RECORD

**INSTRUCTIONS:** This record shall show the location of the corner and shall include all of the following nine elements (a through i).

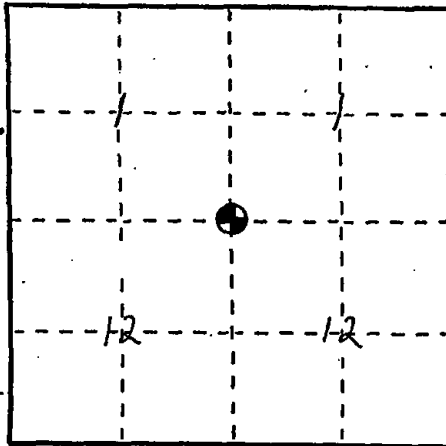
(a) Identify the corner by reference to the U.S. public land survey system.

O = Corner monument restored.

CORNER MONUMENT RESTORED WAS THE  
N 1/4 CORNER OF SECTION 12 T. 17 N., R. 7 E.,  
 TOWN OF LINCOLN, ADAMS CO.

CORNER HISTORY:

ORIGIN:  
 BY SURVEYOR(S) WA  
 DATE: \_\_\_\_\_



PERPETUATION: (PAGE, DATE & SURVEYOR)  
 VOL. I \_\_\_\_\_  
 VOL. II \_\_\_\_\_  
 B. P. R. WA  
 FIELD BOOK \_\_\_\_\_  
 RECENT SURVEYS: (REF., DATE & SURVEYOR) \_\_\_\_\_

(b) Describe any record evidence, monument evidence, occupational evidence, testimonial evidence or any other material evidence you considered, and whether the monument was found or placed.

EVIDENCE FOUND:

RECORD X, MONUMENT X, OCCUPATIONAL \_\_\_\_\_, TESTIMONIAL \_\_\_\_\_, OTHER \_\_\_\_\_.  
 ORIGINAL CORNER MONUMENT LOCATION WAS \_\_\_\_\_ FOUND.

DESCRIPTION: FOUND HARRISON MONUMENT IN GOOD  
SHAPE. RETIED - BELOW AS SHOWN

ADAMS  
COLUMBIA COUNTY ALUMINUM WAS SET IN PLACE. (FOR ANY ADD'L INFO SEE BACK)

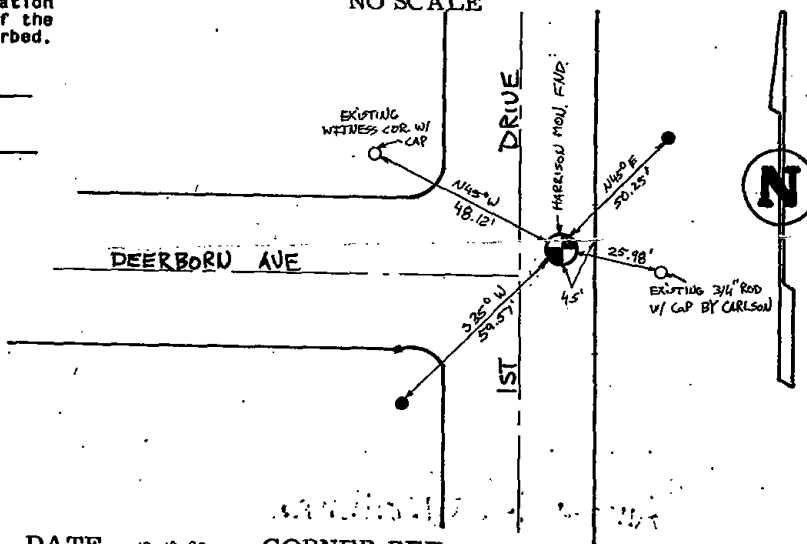
(c) In the plan view drawing below, provide reference ties to at least 4 witness monuments, or, if the location is within a municipality, to at least 2 witness monuments. (Witness monuments shall be made of concrete, natural stone, iron or other equally durable material.)  
 Describe witness monuments.

(d) Show a plan view drawing depicting the relevant monuments and reference ties which is sufficient in detail to enable accurate relocation of the corner monument if the corner monument is disturbed. Indicate north.

- ⊕ - ADAMS COUNTY HARRISON MON. SET
- - 3/4" x 30" REBAR W/ALUM. WITNESS CAP SET
- (OTHER) 3/4" x 30" REBAR SET

NO SCALE

N \_\_\_\_\_  
 E \_\_\_\_\_



DRAFTED BY S.R.K. DATE 12-10-92 CORNER REF. E-23

(e) Describe any material discrepancy between the location of the corner as restored or reestablished and the location of that corner as previously restored or reestablished by distance and direction. Show the discrepancy on the plan view drawing under (d), above. Show the distances between the corner as previously restored or reestablished and (1) the corner as restored or reestablished, and (2) to at least 2 of the witness monuments shown on the drawing in (d), above.

FOUND: \_\_\_\_\_  
SET BY: \_\_\_\_\_

JOB REF: \_\_\_\_\_

BEARS \_\_\_\_\_ FROM CORNER MON. SET.

(f) Was the corner restored through acceptance of (1) an obliterated evidence location, or, (2) a found perpetuated location?

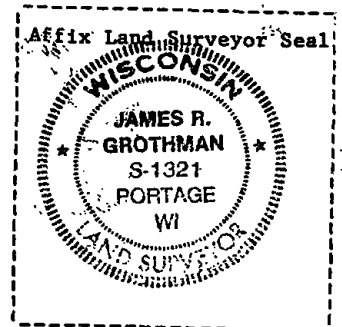
THIS CORNER WAS RESTORED THROUGH \_\_\_\_\_ LOCATION.

(g&h) Was the corner reestablished through lost corner proportionate methods? If so, show the method, including the directions and distances to other public land survey corners used as evidence or used for proportioning in determining the corner location?

NO SCALE  
BEARINGS REFERENCED TO \_\_\_\_\_  
DISTANCES ARE: \_\_\_\_\_ GRID \_\_\_\_\_ GROUND  
GRID FACTOR: \_\_\_\_\_



picture taken; yes no

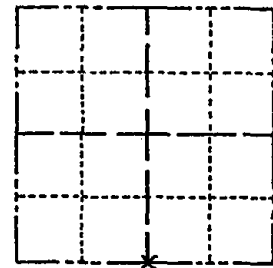


(i) I, JAMES R. GROTHMAN  
(type or print name) certify that the corner location shown on this record was determined by me or under my direction and control and that this U.S. Public Land Survey Monument Record is correct and complete to the best of my knowledge and belief.  
James R. Grothman 12-09-92  
Signature Date

# Government Land Corner Certificate

ADAMS County  
 TYPE OF MONUMENT: Harrison  
 STATE PLANE COORDINATES: N \_\_\_\_\_  
 E \_\_\_\_\_  
 ELEVATION — M.S.L. DATUM: \_\_\_\_\_  
 THETA ANGLE: \_\_\_\_\_  
 FIELD BOOK: 54 PAGE 70B  
 DRAWN BY: L.W. Scott

CORNER NO. 32  
 SECTION 1  
 TOWN 17  
 RANGE 7



LOCATION  
(Indicated by 'X')

## BASIS FOR MONUMENT LOCATION

Show info such as: History of corner, with reference to Vol. and pg., dates, surveyor; exact description of monument replaced; if location computed, by taped or EDM traverse; landowner remarks, etc. (Use reverse side if necessary)

No record of resurvey. Corner evidence destroyed by road construction. Corner is set half-way and equidistant between Section corners.

SEAL:



DATA SHOWN HERE ON  
CERTIFIED CORRECT:

*Anthony B. Kiedrowski*  
Registered Land Surveyor

DATE: 2/3/81

SEE TIE SHEET BY  
JAMES GROTHMAN 12/09/92

## TIE SKETCH

Show at least four ties, also fence lines, roads, topo, size and type of witness trees and if off road - best way to arrive at corner.

