

PUBLIC LAND SURVEY MONUMENT RECORD

TYPE OF MONUMENT: HARRISON
 ADAMS COUNTY COORDINATES, NAD 83 (2007)

N. 216294.203

E. 562485.110

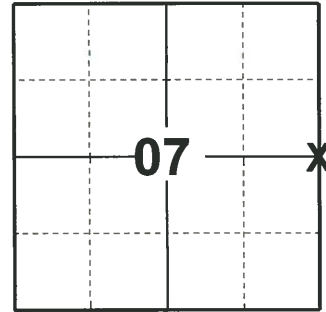
ELEVATION- _____ DATUM _____

FIELD WORK DATE: 03/28/2019

BASIS FOR MONUMENT LOCATION

1982 - PLS 1444 SET CORNER EQUIDISTANT AND ON LINE BETWEEN SECTION CORNERS. EXCAVATION REVEALED NO EVIDENCE OF ANY ORIGINAL OR RESURVEY CORNER.

2019 - PLS 2675 FOUND HARRISON FLUSH WITH THE ROAD SURFACE, 3 TIES, AND 1 WITNESS. THE MONUMENT AGREES WITH THE EXISTING TIES AND WITNESS. ACCEPTED THE HARRISON AS THE CORNER LOCATION. SET 1 NEW TIE AND MEASURED TO A FOUND PROPERTY IRON AND THE EXISTING TIES AND WITNESS.



LOCATION

(INDICATE CORNER BY "X")

SEAL:



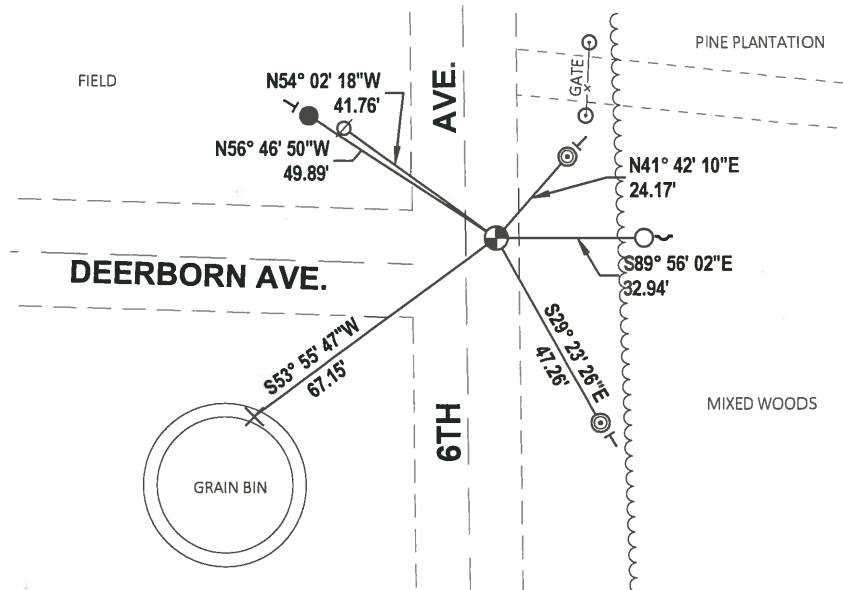
DATA SHOWN HERE ON THIS TIE SHEET IS CORRECT AND COMPLETE TO THE BEST OF MY KNOWLEDGE AND BELIEF.

PROFESSIONAL LAND SURVEYOR

DATE 5/1/19

- TIE SKETCH

NOTE: THE CORNER FALLS 6.7'± EAST OF 6TH AVE CENTERLINE.

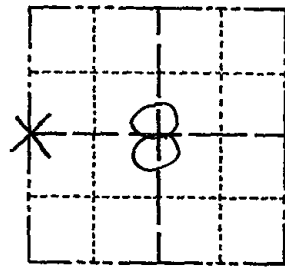


- SET 3/4" x 18" IRON REBAR, 1.50#/FT
- FOUND 3/4" IRON ROD
- ⊙ FOUND 2-3/8" O.D. IRON PIPE
- ⊕ FOUND HARRISON MONUMENT
- ∅ WITNESS POWER POLE
- ↙ STEEL FENCE POST
- ┌ VINYL "T" POST

Government Land Corner Certificate

ADAMS County
 TYPE OF MONUMENT: HARRISON
 STATE PLANE COORDINATES: N _____
 E _____
 ELEVATION — M.S.L. DATUM: _____
 THETA ANGLE: _____
 FIELD BOOK: 92 PAGE 117
 DRAWN BY: SSH

CORNER NO. 35
 SECTION 8
 TOWN 17
 RANGE 7



BASIS FOR MONUMENT LOCATION

Show info such as: History of corner, with reference to Vol. and pg., dates, surveyor; exact description of monument replaced; if location computed, by taped or EDM traverse; landowner remarks, etc. (Use reverse side if necessary)

Corner is set equidistant and on line between section corners. Excavation revealed no evidence of any original or resurvey corner.

LOCATION
(Indicated by 'X')

SEAL:



DATA SHOWN HERE ON
CERTIFIED CORRECT:

Lance J. Habeck
Registered Land Surveyor

DATE: 9/29/82

TIE SKETCH

Show at least four ties, also fence lines, roads, topo, size and type of witness trees and if off road - best way to arrive at corner.

