

PUBLIC LAND SURVEY MONUMENT RECORD

TYPE OF MONUMENT: HARRISON
 ADAMS COUNTY COORDINATES, NAD 83 (2007)

N. 216288.857

E. 567773.828

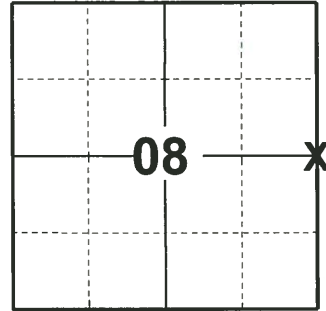
ELEVATION- - - - - DATUM - - - - -

FIELD WORK DATE: 03/26/2019

BASIS FOR MONUMENT LOCATION

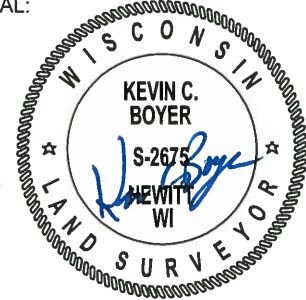
1974 - PLS 1103 FIELD INVESTIGATION YIELDED NO EVIDENCE AS TO THE LOCATION OF THIS CORNER OR ANY OF ITS ACCESSORY MONUMENTS. RAN EDM/ TRANSIT TRAVERSE OF SECTION 9 AND SET QUARTER CORNER EQUIDISTANT AND ON LINE BETWEEN SOUTHWEST AND NORTHWEST SECTION CORNERS.

2019 - PLS 2675 FOUND HARRISON FLUSH WITH THE GROUND AND 2 WITNESSES. THE MONUMENT AGREES WITH THE EXISTING WITNESSES. ACCEPTED THE HARRISON AS THE CORNER LOCATION. SET 4 NEW TIES AND MEASURED TO THE EXISTING WITNESSES.



LOCATION
 (INDICATE CORNER BY "X")

SEAL:

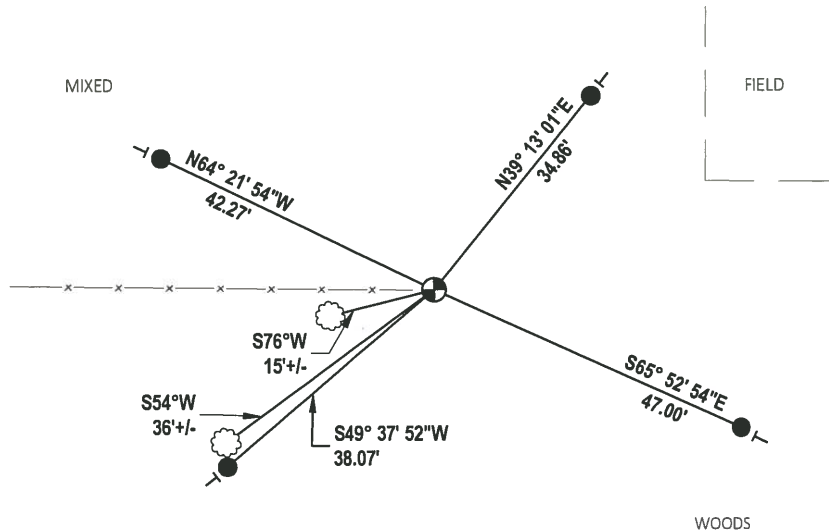
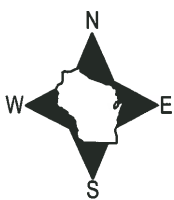


DATA SHOWN HERE ON THIS TIE SHEET IS CORRECT AND COMPLETE TO THE BEST OF MY KNOWLEDGE AND BELIEF.

PROFESSIONAL LAND SURVEYOR

DATE 5/1/19

TIE SKETCH



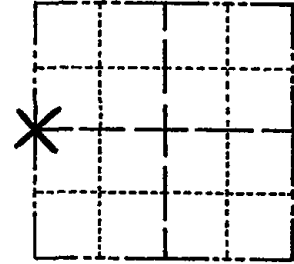
- SET 3/4" x 18" IRON REBAR, 1.50#/FT
- ⊕ FOUND HARRISON MONUMENT
- VINYL "T" POST
- ☼ WITNESS TREE

WOODS

ADAMS COUNTY
Survey Monument Record

CORNER NO. 462⁽³⁶⁾
 SECTION 9
 TOWN 17
 RANGE 7

TYPE OF MONUMENT: Harrison Standard
 STATE PLANE COORDINATES: N 43°57'34.4"
 HANO HELD NAV W 89°40'41.1"
 ELEVATION — M.S.L. DATUM: _____
 THETA ANGLE: _____
 FIELD BOOK: _____ PAGE _____



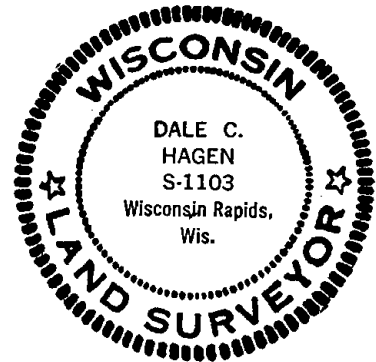
LOCATION
 (Indicated by 'X')

BASIS FOR MONUMENT LOCATION

(Use reverse side if necessary)

Show info such as: History of corner, with reference to Vol. and pg, dates, surveyor; exact description of monument replaced; if location computed, by taped or EDM traverse; landowner remarks, etc.

SEAL:



Field investigation yielded no evidence as to the location of this corner or any of its accessory monuments.

Ran EDM/transit traverse of Section 9, and set Quarter Corner equidistant and on line between Southwest and Northwest section corners.

CORNER	OK	3-14-77	GR-SS
"	"	6-11-82	PK-SS
"	"	2-4-87	SS
"	"	6-2-92	JG
"	"	5-8-97	JG
"	"	2-18-02	JG-SS

CERTIFIED CORRECT:

Dale C. Hagen
 Registered Land Surveyor

DATE: June 28, 1974

TIE SKETCH OK, 9-12-07-JG

(Show at least four ties)

