

09  
SECTION

17  
TOWN

07  
RANGE

# ADAMS COUNTY

COUNTY CORNER NO: 37

ROMPORTOL ID: 41707092000

## PUBLIC LAND SURVEY MONUMENT RECORD

TYPE OF MONUMENT: HARRISON  
ADAMS COUNTY COORDINATES, NAD 83 (2007)

N. 216307.703

E. 573072.905

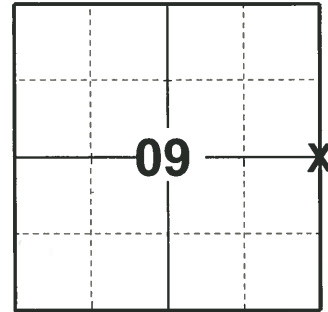
ELEVATION- \_\_\_\_\_ DATUM \_\_\_\_\_

FIELD WORK DATE: 04/02/2019

### BASIS FOR MONUMENT LOCATION

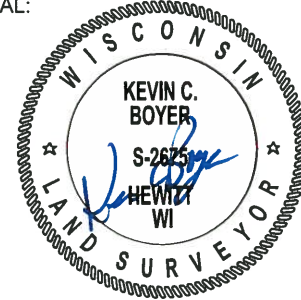
1974 - PLS 1103 EXCAVATED WITH BACKHOE YIELDED NO EVIDENCE AS TO THE LOCATION OF THE ORIGINAL CORNER. RAN EDM/TRANSIT TRAVERSE OF SECTION 9, AND SET QUARTER CORNER EQUIDISTANT AND ON LINE BETWEEN NORTHEAST AND SOUTHEAST SECTION CORNERS.

2019 - PLS 2675 FOUND HARRISON 2" BELOW THE GROUND AND 1 TIE. THE MONUMENT AGREES WITH THE EXISTING TIE. ACCEPTED THE HARRISON AS THE CORNER LOCATION. SET 3 NEW TIES AND MEASURED TO THE EXISTING TIE.



LOCATION  
(INDICATE CORNER BY "X")

SEAL:



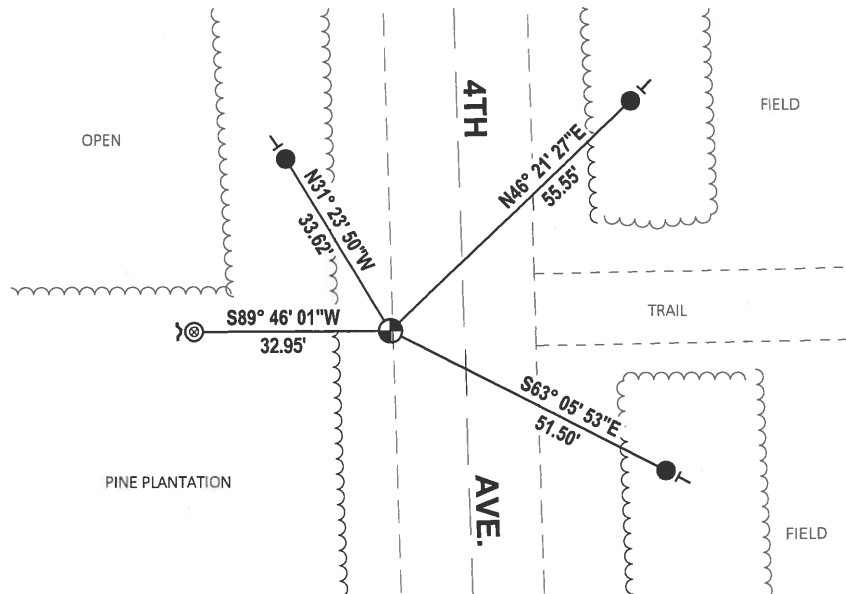
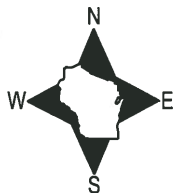
DATA SHOWN HERE ON THIS TIE SHEET IS CORRECT AND COMPLETE TO THE BEST OF MY KNOWLEDGE AND BELIEF.

PROFESSIONAL LAND SURVEYOR

DATE 5/1/19

### TIE SKETCH

NOTE: THE CORNER LANDS ±12.2' WEST OF 4TH AVE. CENTERLINE.



- SET 3/4" x 18" IRON REBAR, 1.50#/FT
- ⊗ FOUND 1-1/2" O.D. IRON PIPE
- ⊕ FOUND HARRISON MONUMENT
- ↙ STEEL FENCE POST
- VINYL "T" POST

# ADAMS COUNTY

## Survey Monument Record

TYPE OF MONUMENT: Harrison Standard

STATE PLANE COORDINATES: N \_\_\_\_\_

E \_\_\_\_\_

ELEVATION — M.S.L. DATUM: \_\_\_\_\_

THETA ANGLE: \_\_\_\_\_

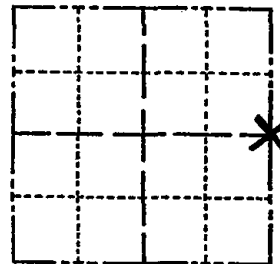
FIELD BOOK: \_\_\_\_\_ PAGE \_\_\_\_\_

CORNER NO. 459

SECTION 9

TOWN 17

RANGE 7



LOCATION  
(Indicated by 'X')

SEAL:



CERTIFIED CORRECT:

Dale C. Hagen  
Registered Land Surveyor

DATE: June 28, 1974

### BASIS FOR MONUMENT LOCATION

(Use reverse side if necessary)

Show info such as: History of corner, with reference to Vol. and pg, dates, surveyor; exact description of monument replaced; if location computed, by taped or EDM traverse; landowner remarks, etc.

Excavation with back-hoe yielded no evidence as to the location of the original corner.

Ran EDM/transit traverse of Section 9, and set quarter corner equidistant and on line between Northeast and Southeast section corners.

CORNER	O.K.	3-14-77	GR-SS
"	"	5-26-82	PK-SS
"	"	7-23-87	JL-SS
"	"	1-3-92	GR-JG
"	"	1-22-97	JG-SS
NEW TIE, MON.	OK	2-18-02	JG-SS

TIE SKETCH OK, 9-12-07-JG  
OK 1/27/12 MS  
(Show at least four ties)

