

10  
SECTION

17  
TOWN

07  
RANGE

# ADAMS COUNTY

COUNTY CORNER NO: 38

ROMPORTOL ID: 41707102000

## PUBLIC LAND SURVEY MONUMENT RECORD

TYPE OF MONUMENT: HARRISON  
ADAMS COUNTY COORDINATES, NAD 83 (2007)

N. 216310.624

E. 578355.287

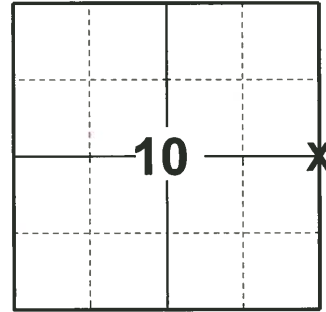
ELEVATION- \_\_\_\_\_ DATUM \_\_\_\_\_

FIELD WORK DATE: 04/02/2019

### BASIS FOR MONUMENT LOCATION

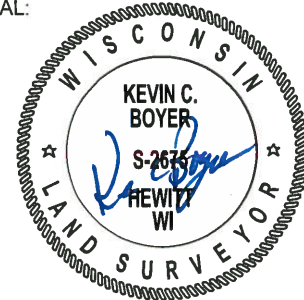
1980 - PLS 584 NO CORNER OR SURVEY IN THE AREA AND NO EVIDENCE OF ANY CORNER SET AROUND AREA. IF A CORNER WAS SET IN AREA, IT WAS DESTROYED BY ROAD WORK. SET QUARTER CORNER ON LINE BETWEEN SECTION CORNERS TO THE NORTH AND SOUTH, AND HALFWAY.

2019 - PLS 2675 FOUND HARRISON FLUSH WITH THE GROUND AND 1 WITNESS. THE MONUMENT AGREES WITH THE WITNESS. ACCEPTED THE HARRISON AS THE CORNER LOCATION. SET 3 NEW TIES AND MEASURED TO A PROPERTY IRON AND THE EXISTING WITNESS.



LOCATION  
(INDICATE CORNER BY "X")

SEAL:



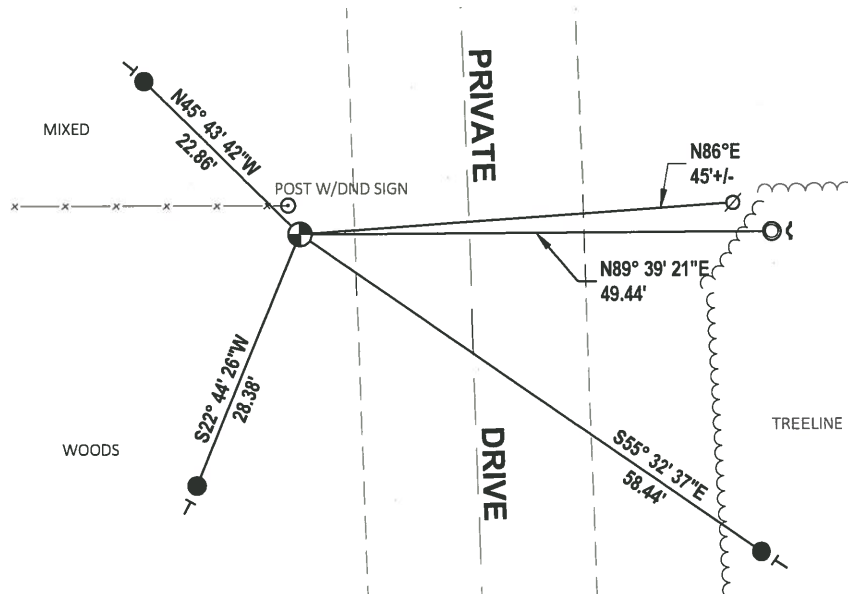
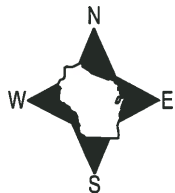
DATA SHOWN HERE ON THIS TIE SHEET IS CORRECT AND COMPLETE TO THE BEST OF MY KNOWLEDGE AND BELIEF.

PROFESSIONAL LAND SURVEYOR

DATE 5/1/19

### - TIE SKETCH

NOTE: THE CORNER LANDS ±17.7' WEST OF THE PRIVATE DRIVE CENTERLINE.

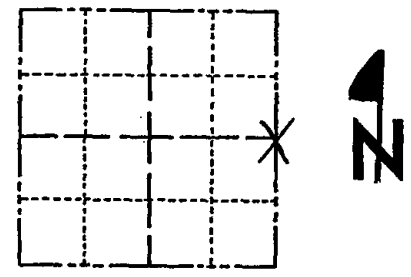


- SET 3/4" x 18" IRON REBAR, 1.50#/FT
- FOUND 1-1/4" O.D. IRON PIPE
- ⊕ FOUND HARRISON MONUMENT
- ∅ WITNESS POWER POLE
- ↙ STEEL FENCE POST
- ┌ VINYL "T" POST

# Government Land Corner Certificate

ADAMS County  
 TYPE OF MONUMENT: Harrison  
 STATE PLANE COORDINATES: N \_\_\_\_\_  
 E \_\_\_\_\_  
 ELEVATION — M.S.L. DATUM: \_\_\_\_\_  
 THETA ANGLE: \_\_\_\_\_  
 FIELD BOOK: 87 PAGE 130  
 DRAWN BY: R. NUBER

CORNER NO. 38  
 SECTION 10  
 TOWN 17  
 RANGE 7



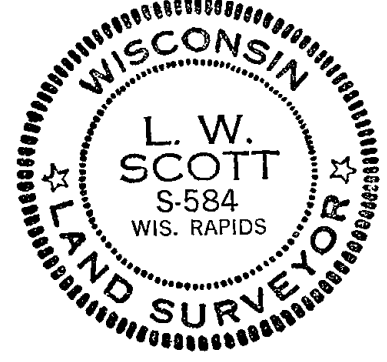
LOCATION  
(Indicated by 'X')

## BASIS FOR MONUMENT LOCATION

Show info such as: History of corner, with reference to Vol. and pg., dates, surveyor; exact description of monument replaced; if location computed, by taped or EDM traverse; landowner remarks, etc. (Use reverse side if necessary)

No corner or survey in the area and no evidence of any corner set around here. If a corner was here, it was destroyed by road work. So set Quarter corner on line between Section corners to the North and South, and halfway.

SEAL:



DATA SHOWN HERE ON  
CERTIFIED CORRECT

*L. W. Scott*  
Registered Land Surveyor

DATE: 12/22/80

## TIE SKETCH

Show at least four ties, also fence lines, roads, topo, size and type of witness trees and if off road - best way to arrive at corner.

