

12
SECTION

17
TOWN

06
RANGE

ADAMS COUNTY

COUNTY CORNER NO: 53

ROMPORTOL ID: 41706120000

PUBLIC LAND SURVEY MONUMENT RECORD

TYPE OF MONUMENT: HARRISON
ADAMS COUNTY COORDINATES, NAD 83 (2007)

N. 213698.798

E. 557414.092

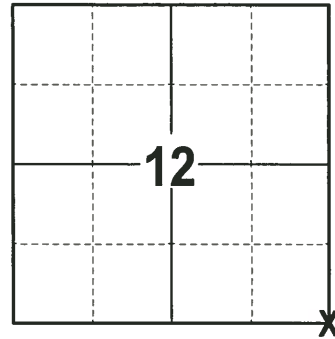
ELEVATION- DATUM

FIELD WORK DATE: 11/29/2017

BASIS FOR MONUMENT LOCATION

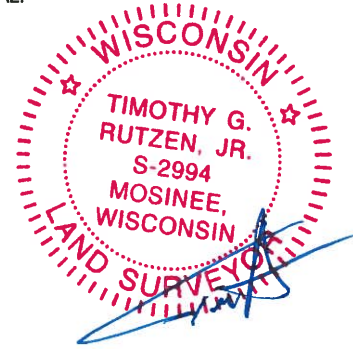
1973 - PLS 878 FOUND P.K. NAIL AND ACCEPTED LOCATION AS CORRECT AFTER TRAVERSING THE ENTIRE SECTION. NAIL BELIEVED TO BE SET BY SAM MULLEN IN HIS SURVEY OF DEER RUN ACRES. SET A HARRISON MONUMENT AT THE PK NAIL LOCATION AND TIED OUT.

2017 - PLS 2994 FOUND A HARRISON MONUMENT 6" BELOW THE ROAD SURFACE, 1 PROPERTY IRON (USED AS A TIE) AND 1 WITNESS. THE MONUMENT AGREES WITH THE EXISTING TIE AND WITNESS. ACCEPTED THE HARRISON MONUMENT AS THE CORNER LOCATION. SET 3 NEW TIES AND MEASURED TO THE TIES AND WITNESS.



LOCATION
(INDICATE CORNER BY "X")

SEAL:



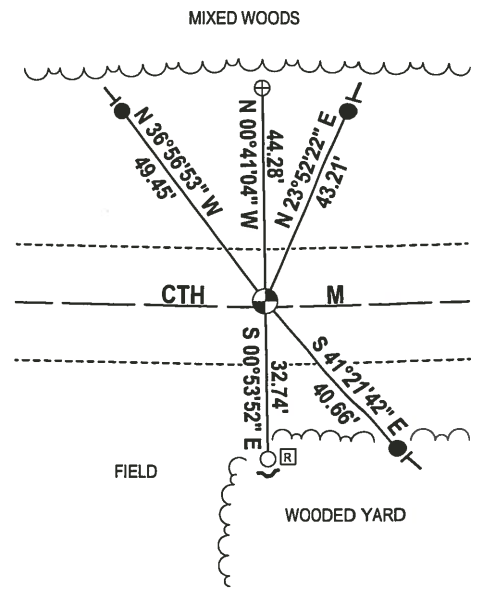
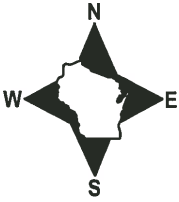
DATA SHOWN HERE ON THIS TIE SHEET IS CORRECT AND COMPLETE TO THE BEST OF MY KNOWLEDGE AND BELIEF.

PROFESSIONAL LAND SURVEYOR

DATE 1-4-18

- TIE SKETCH -

NOTE: THE CORNER FALLS 1± NORTH OF THE CENTERLINE OF CTH M.



- 3/4" x 18" IRON REBAR SET, 1.50#/FT
- 3/4" IRON ROD FOUND
- ⊕ 4" ROUND FENCE POST W/NAIL FOUND
- ⊙ HARRISON FOUND
- ⊠ RIGHT OF WAY GUARD POST
- ↗ STEEL FENCE POST
- ↖ VINYL "T" POST

ADAMS COUNTY

Survey Monument Record

TYPE OF MONUMENT: 30# HARRISON

STATE PLANE COORDINATES: N _____

E _____

ELEVATION — M.S.L. DATUM: _____

THETA ANGLE: _____

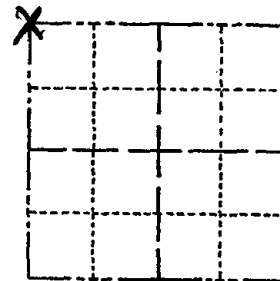
FIELD BOOK: 106 PAGE 1

CORNER NO. 199

SECTION 18

TOWN 17

RANGE 7



LOCATION
(Indicated by 'X')

SEAL:



BASIS FOR MONUMENT LOCATION

(Use reverse side if necessary)

Show info such as: History of corner, with reference to Vol. and pg, dates, surveyor; exact description of monument replaced; if location computed, by taped or EDM traverse; landowner remarks, etc.

Found P.K. nail and set monument

September 21, 1972

Anthony B. Kiedrowski R.L.S. 070

Accepted location as correct after traversing entire section. Nail believed set by Sam Mullen in his survey of Deer Run Acres.

CORNER O.K. 3-14-77 GR-SS

NOTE: Came back later and excavated with back hoe for stone called for. Could not locate it. ABK

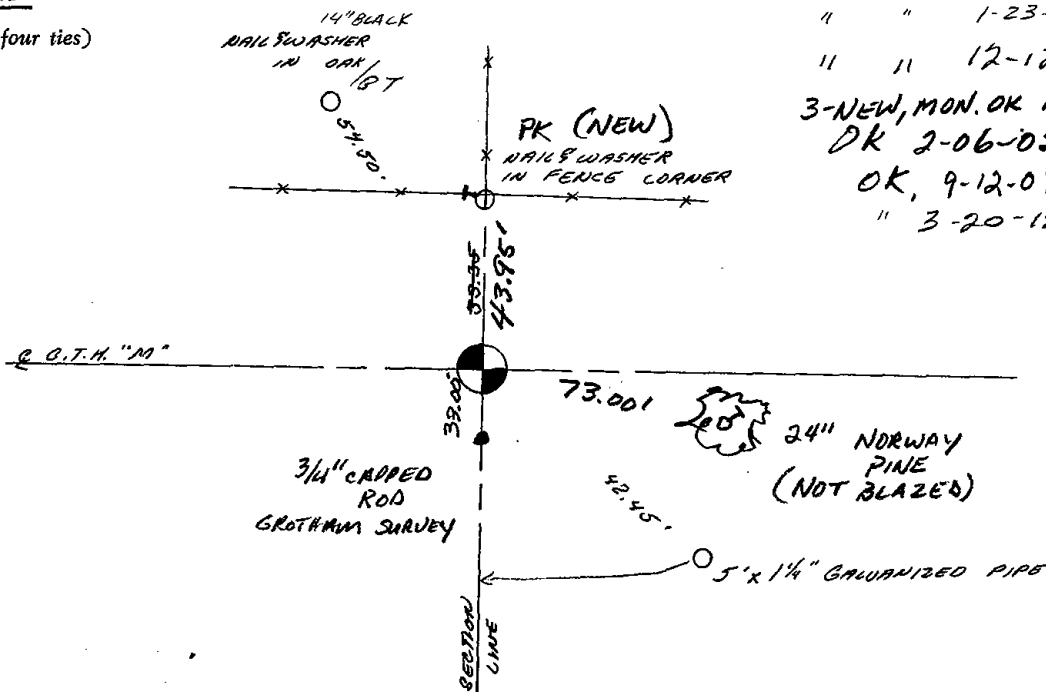
CERTIFIED CORRECT:

Anthony B. Kiedrowski
Registered Land Surveyor

DATE: 1-30-73

TIE SKETCH

(Show at least four ties)



- COR. OK 2-25-82 GR-SS
- " " 1-23-87 JL-SS
- " " 12-12-91 SG-KZ
- 3-NEW, MON. OK 10/29/97-JG
- DK 2-06-02 JG
- OK, 9-12-07-JG
- " 3-20-12 MS