

PUBLIC LAND SURVEY MONUMENT RECORD

TYPE OF MONUMENT: HARRISON
 ADAMS COUNTY COORDINATES, NAD 83 (2007)

N. 213677.708

E. 559847.716

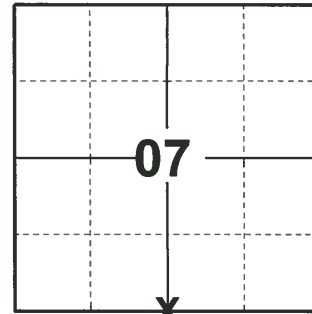
ELEVATION- - - - - DATUM - - - - -

FIELD WORK DATE: 04/03/2019

BASIS FOR MONUMENT LOCATION

1973 - PLS 878 LOCATION OF THIS CORNER WAS DETERMINED BY TRAVERSING AND SET ON A STRAIGHT LINE AND IN PROPORTION WITH THE ORIGINAL GOVERNMENT NOTES.

2019 - PLS 2675 FOUND HARRISON 6" BELOW THE ROAD SURFACE AND 2 WITNESSES. THE MONUMENT AGREES WITH BOTH WITNESSES. ACCEPTED THE HARRISON AS THE CORNER LOCATION. SET 4 NEW TIES AND MEASURED TO THE EXISTING WITNESSES.



LOCATION
 (INDICATE CORNER BY "X")

SEAL:



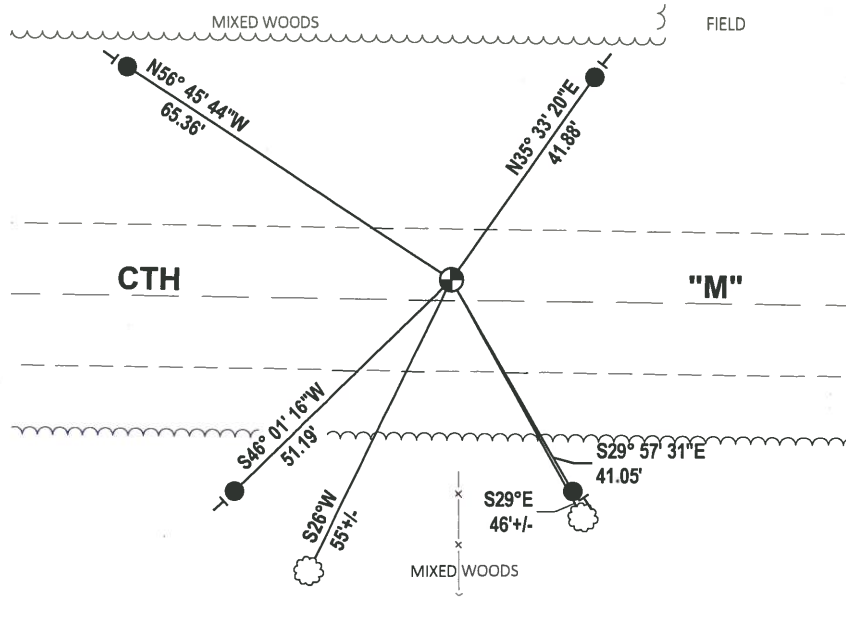
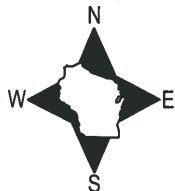
DATA SHOWN HERE ON THIS TIE SHEET IS CORRECT AND COMPLETE TO THE BEST OF MY KNOWLEDGE AND BELIEF.

PROFESSIONAL LAND SURVEYOR

DATE 5/1/19

TIE SKETCH

NOTE: THE CORNER LANDS ±3.6' NORTH OF CTH "M" CENTERLINE.



- SET 3/4" x 18" IRON REBAR, 1.50#/FT
- ⊕ FOUND HARRISON MONUMENT
- ┆ VINYL "T" POST
- ⊗ WITNESS TREE

ADAMS COUNTY

Survey Monument Record

TYPE OF MONUMENT: harrison monument

STATE PLANE COORDINATES: N _____
E _____

ELEVATION — M.S.L. DATUM: _____

THETA ANGLE: _____

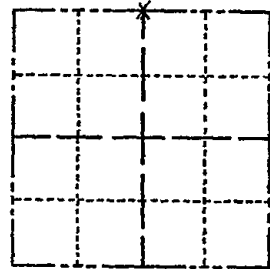
FIELD BOOK: 102 PAGE 65

CORNER NO. 197

SECTION 18

TOWN 17

RANGE 7



LOCATION
(Indicated by 'X')

SEAL:



BASIS FOR MONUMENT LOCATION

(Use reverse side if necessary)

Show info such as: History of corner, with reference to Vol. and pg, dates, surveyor; exact description of monument replaced; if location computed, by taped or EDM traverse; landowner remarks, etc.

Location of this corner was determined by traverseing.
and (see below)
September 21, 1972

Anthony B. Kiedrowski R.L.S. 878

Set on a straight line and in proportion
with the original government notes.

CORNER	O.K.	3-15-77	GR-SS
"	"	3-25-82	GR-SS
"	"	1-23-87	JL-SS
"	"	12-12-91	KZ-SG
TIES	OK	1-29-97	CR-JG

CERTIFIED CORRECT:

Anthony B. Kiedrowski
Registered Land Surveyor

DATE: 1-30-77

TIE SKETCH OK 2-06-02-JG
OK 9-12-07-J6

(Show at least four ties)
2-20-12 MS

