

07  
SECTION

17  
TOWN

07  
RANGE

# ADAMS COUNTY

COUNTY CORNER NO: 43  
ROMPORTOL ID: 41707070000

## PUBLIC LAND SURVEY MONUMENT RECORD

TYPE OF MONUMENT: HARRISON  
ADAMS COUNTY COORDINATES, NAD 83 (2007)

N. 213653.758

E. 562503.798

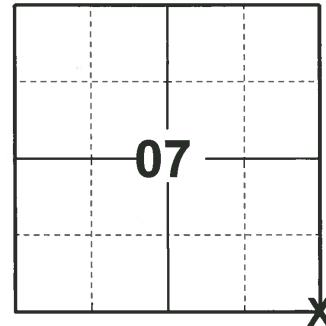
ELEVATION- - - - DATUM - - - -

FIELD WORK DATE: 04/03/2019

### BASIS FOR MONUMENT LOCATION

1971 - PLS 981 FOUND "PK" NAIL AND SET HARRISON MONUMENT IN ITS PLACE.

2019 - PLS 2675 FOUND HARRISON 4" BELOW THE ROAD SURFACE AND 2 WITNESSES. THE MONUMENT AGREES WITH BOTH WITNESSES. ACCEPTED THE HARRISON AS THE CORNER LOCATION. SET 2 NEW TIES AND MEASURED TO 2 FOUND PROPERTY IRONS AND THE EXISTING WITNESSES.



LOCATION  
(INDICATE CORNER BY "X")

SEAL:



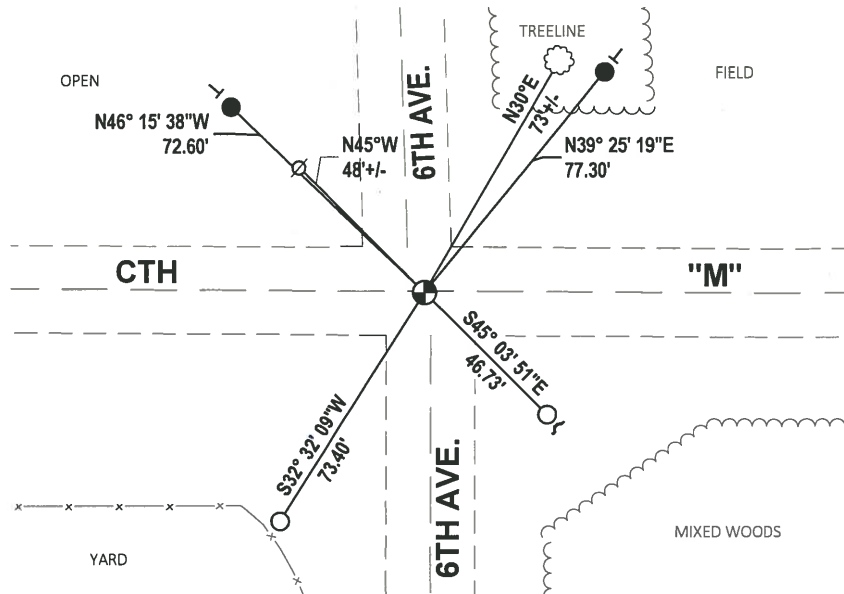
DATA SHOWN HERE ON THIS TIE SHEET IS CORRECT AND COMPLETE TO THE BEST OF MY KNOWLEDGE AND BELIEF.

PROFESSIONAL LAND SURVEYOR

DATE 5/1/19

### - TIE SKETCH

NOTE: THE CORNER LANDS ON THE CENTERLINE OF CTH "M".



- SET 3/4" x 18" IRON REBAR, 1.50#/FT
- FOUND 3/4" IRON ROD
- ⊕ FOUND HARRISON MONUMENT
- ⊗ WITNESS POWER POLE
- ┌ STEEL FENCE POST
- └ VINYL "T" POST
- ⊙ WITNESS TREE

# ADAMS COUNTY

## Survey Monument Record

CORNER NO. 40  
 SECTION 18  
 TOWN 17  
 RANGE 7

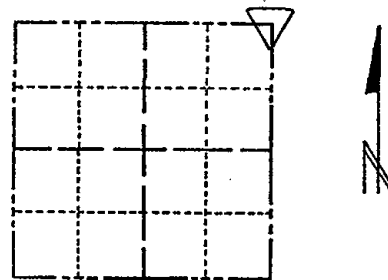
TYPE OF MONUMENT: 30" HARRISON

STATE PLANE COORDINATES: N \_\_\_\_\_  
E \_\_\_\_\_

ELEVATION — M.S.L. DATUM: \_\_\_\_\_

THETA ANGLE: \_\_\_\_\_

FIELD BOOK: 104 PAGE 72



LOCATION  
(Indicated by 'X')

SEAL:

### BASIS FOR MONUMENT LOCATION

(Use reverse side if necessary)

Show info such as: History of corner, with reference to Vol. and pg, dates, surveyor; exact description of monument replaced; if location computed, by taped or EDM traverse; landowner remarks, etc.

Found "PK" nail and set monument

August 23, 1971

Sam T. Mullen R.L.S. S-981

CORNER O.K. 3-14-77 GR-SS  
 " " 2-25-82 GR-SS  
 " " 1-23-87 JL-SS  
 " " 11-25-91 K2-GR

ZNEWTIES/LGONE 1-29-97 CR-JG  
 OK 2-06-02 JG

CERTIFIED CORRECT:

Registered Land Surveyor

DATE: \_\_\_\_\_

TIE SKETCH OK-9-12-07-JG  
 OK 2-20-12 MS

(Show at least four ties)

SET R.R. SPIKES

