

08  
SECTION

17  
TOWN

07  
RANGE

# ADAMS COUNTY

COUNTY CORNER NO: 45  
ROMPORTOL ID: 41707080000

## PUBLIC LAND SURVEY MONUMENT RECORD

TYPE OF MONUMENT: HARRISON  
ADAMS COUNTY COORDINATES, NAD 83 (2007)

N. 213644.614

E. 567819.078

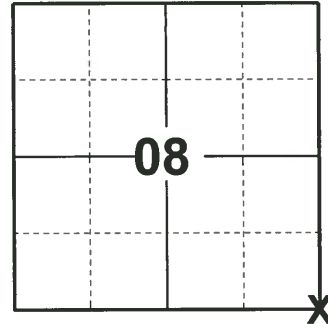
ELEVATION- - - - DATUM - - - -

FIELD WORK DATE: 04/03/2019

### BASIS FOR MONUMENT LOCATION

1947 - PLS 878 FOUND AND ACCEPTED RAILROAD SPIKE AFTER EXCAVATING INTERSECTION WITH BACKHOE AND FINDING NOTHING ELSE.

2019 - PLS 2675 FOUND HARRISON 4" BELOW THE ROAD SURFACE AND 1 WITNESS. THE MONUMENT AGREES WITH THE WITNESS. ACCEPTED THE HARRISON AS THE CORNER LOCATION. SET 4 NEW TIES AND MEASURED TO THE EXISTING WITNESS.



LOCATION  
(INDICATE CORNER BY "X")

SEAL:



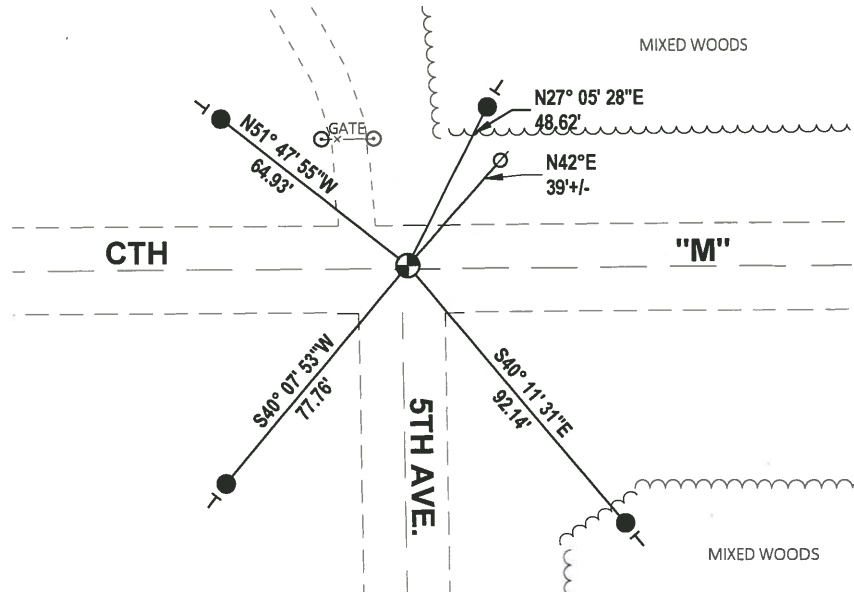
DATA SHOWN HERE ON THIS TIE SHEET IS CORRECT AND COMPLETE TO THE BEST OF MY KNOWLEDGE AND BELIEF.

PROFESSIONAL LAND SURVEYOR

DATE 5/1/19

### - TIE SKETCH

NOTE: THE CORNER LANDS ±1.0' NORTH OF CTH  
"M" CENTERLINE AND ±3.0' EAST OF 5TH AVE.  
CENTERLINE.



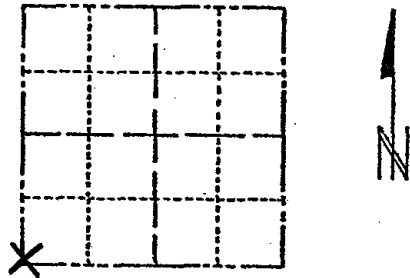
- SET 3/4" x 18" IRON REBAR, 1.50#/FT
- ⊕ FOUND HARRISON MONUMENT
- ∅ WITNESS POWER POLE
- VINYL "T" POST

# ADAMS COUNTY

## Survey Monument Record

TYPE OF MONUMENT: Harrison standard  
 STATE PLANE COORDINATES: N \_\_\_\_\_  
 E \_\_\_\_\_  
 ELEVATION — M.S.L. DATUM: \_\_\_\_\_  
 THETA ANGLE: \_\_\_\_\_  
 FIELD BOOK: \_\_\_\_\_ PAGE \_\_\_\_\_

CORNER NO. 395  
 SECTION 9  
 TOWN 17  
 RANGE 7



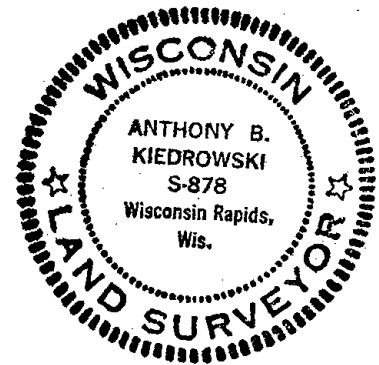
### BASIS FOR MONUMENT LOCATION

(Use reverse side if necessary)

Show info such as: History of corner, with reference to Vol. and pg, dates, surveyor; exact description of monument replaced; if location computed, by taped or EDM traverse; landowner remarks, etc.

Found and accepted railroad spike after excavating intersection with backhoe and finding nothing else.

SEAL: LOCATION (Indicated by 'X')



CORNER	O.K.	3-14-77	GR-55
"	"	2-25-82	GR-55
3 NEW TIES		1-23-87	JL-55
CORNER	OK	12-12-91	KZ-56
"	"	1-22-97	JG-55
"	OK	2-06-02	JG

CERTIFIED CORRECT:

*Anthony B. Kiedrowski*  
 Registered Land Surveyor  
 DATE: 6/3/74

### TIE SKETCH OK, 9-12-07 JG

(Show at least four ties)

Ties to nail and disc,

