

11
SECTION

17
TOWN

07
RANGE

ADAMS COUNTY

COUNTY CORNER NO: 51

ROMPORTOL ID: 41707110000

PUBLIC LAND SURVEY MONUMENT RECORD

TYPE OF MONUMENT: HARRISON
ADAMS COUNTY COORDINATES, NAD 83 (2007)

N. 213698.651

E. 583663.354

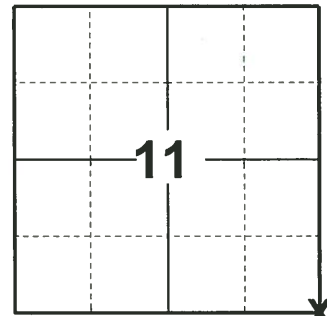
ELEVATION- - - - - DATUM - - - - -

FIELD WORK DATE: 03/21/2019

BASIS FOR MONUMENT LOCATION

1977 - PLS 1103 RAN EDM/T2 TRAVERSE AROUND SECTIONS 14 AND 15 TO DETERMINE SEARCH AREAS FOR INVESTIGATION. COULD FIND NO EVIDENCE OF THE ORIGINAL CORNER OR ANY SUBSEQUENT REMONUMENTATION. DID NOT EXCAVATE BECAUSE SEARCH AREA FALLS IN CUT SECTION OF ROAD. RELOCATED CORNER BY DOUBLING OVER LINE AND DISTANCE BETWEEN SOUTHEAST CORNER AND EAST QUARTER CORNER OF SECTION 14. SET HARRISON JULY 25, 1977.

2019 - PLS 2675 FOUND HARRISON FLUSH WITH THE ROAD SURFACE AND DID NOT RECOVER ANY TIES OR WITNESSES. ACCEPTED THE HARRISON AS THE CORNER LOCATION AND SET 4 NEW TIES.



LOCATION
(INDICATE CORNER BY "X")

SEAL:



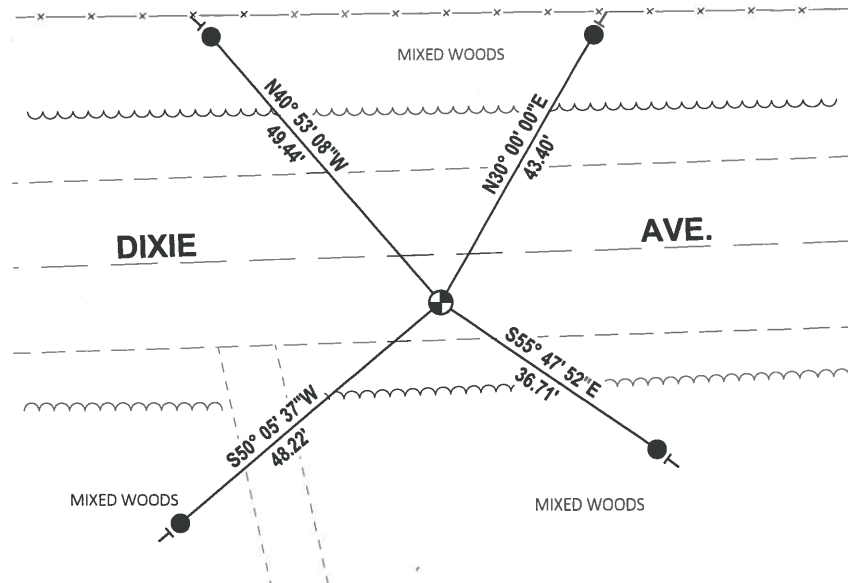
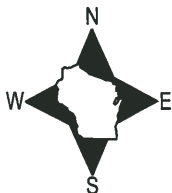
DATA SHOWN HERE ON THIS TIE SHEET IS CORRECT AND COMPLETE TO THE BEST OF MY KNOWLEDGE AND BELIEF.

PROFESSIONAL LAND SURVEYOR

DATE 5/1/19

- TIE SKETCH

NOTE: THE CORNER FALLS 6.8'± SOUTH OF DIXIE AVE.

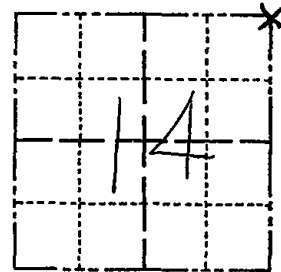


- SET 3/4" x 18" IRON REBAR, 1.50#/FT
- ⊕ FOUND HARRISON MONUMENT
- VINYL "T" POST

Government Land Corner Certificate

Adams County
 TYPE OF MONUMENT: HARRISON Mon.
 STATE PLANE COORDINATES: N _____
 E _____
 ELEVATION — M.S.L. DATUM: _____
 THETA ANGLE: _____
 FIELD BOOK: 57 PAGE 8
 DRAWN BY: G. RHINEHART

CORNER NO. 51
 SECTION 14
 TOWN 17
 RANGE 7



LOCATION
(Indicated by 'X')

BASIS FOR MONUMENT LOCATION

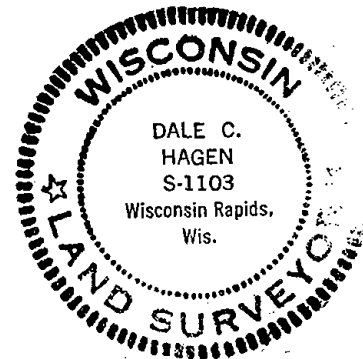
Show info such as: History of corner, with reference to Vol. and pg., dates, surveyor; exact description of monument replaced; if location computed, by taped or EDM traverse; landowner remarks, etc. (Use reverse side if necessary)

Ran EDM/T2 traverse around Sections 14 and 15 to determine search areas for investigation. SEAL:

Could find ^{no} evidence of the original corner or any subsequent remonumentation. Did not excavate because search area falls in cut-section of road.

Relocated corner by doubling over line and distance between Southeast corner and East Quarter corner of Section 14.

Set Harrison July 25, 1977.



DATA SHOWN HERE ON
CERTIFIED CORRECT:

Dale C. Hagen
Registered Land Surveyor

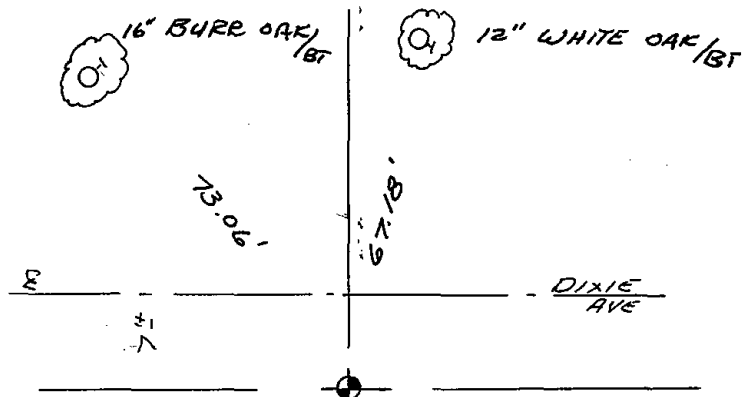
DATE: August 2, 1977

TIE SKETCH

Show at least four ties, also fence lines, roads, topo, size and type of witness trees' and if off road - best way to arrive at corner.

NOTE

Ties in trees to nail in disc.



MAINTENANCE RECORD

Date	Init.	Remarks
3-25-82	GR-SS	O.K.
1-23-81	JL-SS	OK
1-3-92	GR-JG	OK
4-22-91	JG-SS	OK
2-21-02	JG	OK
9-19-07	JG	OK

