

18
SECTION

17
TOWN

07
RANGE

ADAMS COUNTY

COUNTY CORNER NO: 55
ROMPORTOL ID: 41707182000

PUBLIC LAND SURVEY MONUMENT RECORD

TYPE OF MONUMENT: HARRISON (BROKEN-TOP)
ADAMS COUNTY COORDINATES, NAD 83 (2007)

N. 211002.607

E. 562509.998

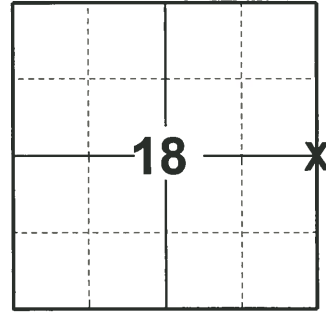
ELEVATION- _____ DATUM _____

FIELD WORK DATE: 04/16/2019

BASIS FOR MONUMENT LOCATION

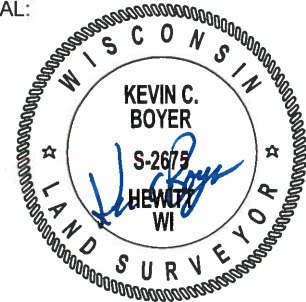
1973 - PLS 878 LOCATION OF THIS CORNER WAS DETERMINED BY TRAVERSING, AND RETRACEMENT OF S. MOLLER SURVEY OF DEER RUN ACRES.

2019 - PLS 2675 FOUND MAG NAIL IN ROAD SURFACE, REMOVED AND FOUND HARRISON (BROKEN-TOP) 12" BELOW THE ROAD SURFACE AND 2 TIES. THE MONUMENT AGREES WITH THE EXISTING TIES. ACCEPTED THE HARRISON (BROKEN-TOP) AS THE CORNER LOCATION. SET 2 NEW TIES AND MEASURED TO THE EXISTING TIES.



LOCATION
(INDICATE CORNER BY "X")

SEAL:



DATA SHOWN HERE ON THIS TIE SHEET IS CORRECT AND COMPLETE TO THE BEST OF MY KNOWLEDGE AND BELIEF.

PROFESSIONAL LAND SURVEYOR

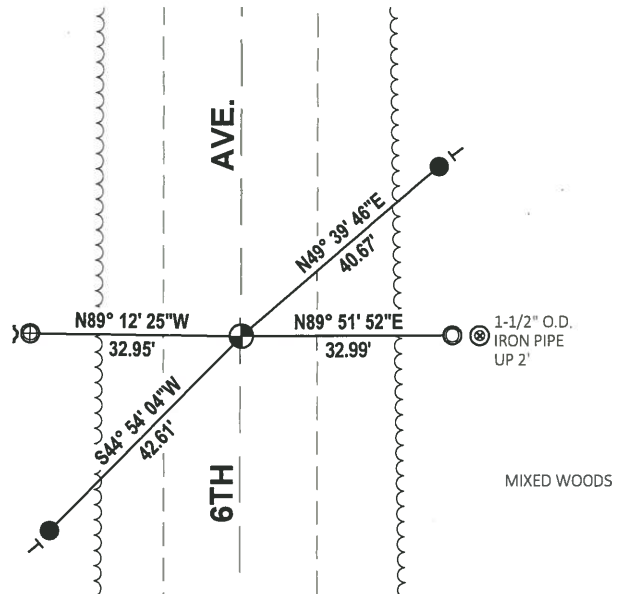
DATE 5/1/19

TIE SKETCH

NOTE: THE CORNER FALLS ON THE CENTERLINE OF 6TH AVE.



MIXED WOODS



- SET 3/4" x 18" IRON REBAR, 1.50#/FT
- ⊕ FOUND 1" O.D IRON PIPE
- FOUND 1-1/4" O.D. IRON PIPE
- ⊕ FOUND HARRISON (BROKEN-TOP) MONUMENT
- ┘ STEEL FENCE POST
- ┘ VINYL "T" POST

ADAMS COUNTY

Survey Monument Record

TYPE OF MONUMENT: HARRISON MONUMENT

STATE PLANE COORDINATES: N _____

E _____

ELEVATION — M.S.L. DATUM: _____

THETA ANGLE: _____

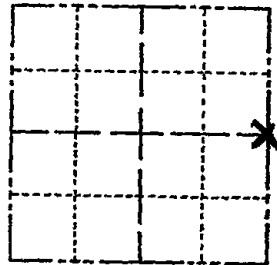
FIELD BOOK: 102 PAGE 66

CORNER NO. 198

SECTION 18

TOWN 17

RANGE 7



LOCATION
(Indicated by 'X')

SEAL:



BASIS FOR MONUMENT LOCATION

(Use reverse side if necessary)

Show info such as: History of corner, with reference to Vol. and pg, dates, surveyor; exact description of monument replaced; if location computed, by taped or EDM traverse; landowner remarks, etc.

Location of this corner was determined by traverseing, & Retraiment of Saw Millar Survey of Dan Ron Bews, September 21, 1972

Anthony B. Kiedrowski R.L.S. 878

| | | | |
|-----------|------|----------|-------|
| CORNER | O.K. | 3-14-77 | GR-SS |
| " | " | 3-25-82 | GR-SS |
| " | " | 1-23-87 | JL-SS |
| " | " | 11-25-91 | K2-GR |
| TIES | OK | 1-29-97 | CR-JG |
| 1-NEW TIE | | 2-06-02 | JG |

CERTIFIED CORRECT:

Anthony B. Kiedrowski
Registered Land Surveyor

DATE: 2-2-73

TIE SKETCH OK, 9-13-07 JG OK 2-20-12 MS

(Show at least four ties)

