

## PUBLIC LAND SURVEY MONUMENT RECORD

TYPE OF MONUMENT: HARRISON  
ADAMS COUNTY COORDINATES, NAD 83 (2007)

N. 211028.728

E. 573110.556

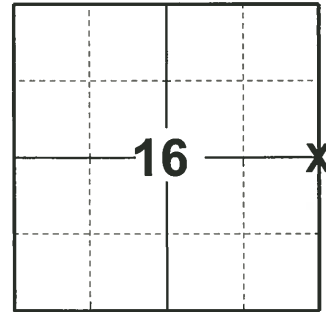
ELEVATION- - - - - DATUM - - - - -

FIELD WORK DATE: 04/10/2019

### BASIS FOR MONUMENT LOCATION

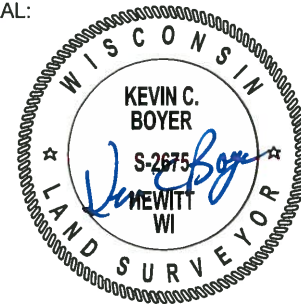
1979 - PLS 1103 SET HARRISON PROPORTIONATE ON LINE BETWEEN THE NW CORNER AND THE SW CORNER OF SECTION 15. THIS CORNER WAS SET AFTER AN EXTENSIVE EDM/T2 TRAVERSE WAS RUN AND CAREFULLY ANALYZED. NOTE: THIS CORNER FALLS QUITE WELL IN LINE WITH THE EAST LINE OF AN OLD CEMETERY JUST SOUTH OF THE AREA. (PER A. KIEDROWSKI)

2019 - PLS 2675 FOUND HARRISON FLUSH WITH THE GROUND AND 2 WITNESS TREES. THE MONUMENT AGREES WITH THE EXISTING WITNESS TREES. ACCEPTED THE HARRISON AS THE CORNER LOCATION. SET 3 NEW TIES AND MEASURED TO A FOUND PROPERTY IRON AND THE EXISTING WITNESS TREES.



LOCATION  
(INDICATE CORNER BY "X")

SEAL:



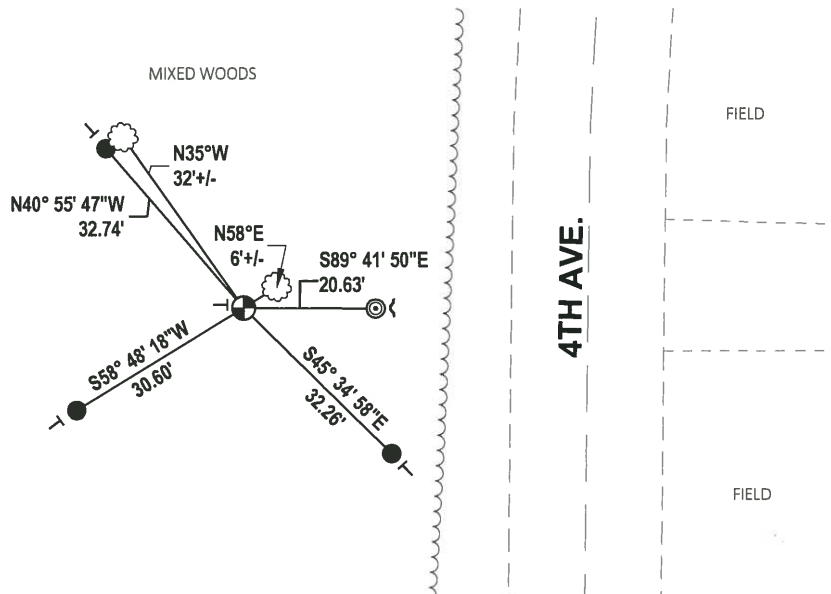
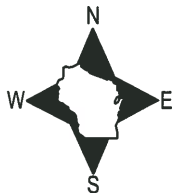
DATA SHOWN HERE ON THIS TIE SHEET IS CORRECT AND COMPLETE TO THE BEST OF MY KNOWLEDGE AND BELIEF.

PROFESSIONAL LAND SURVEYOR

DATE 5/1/19

### - TIE SKETCH

NOTE: THE CORNER FALLS ±54' WEST OF 4TH AVE. CENTERLINE.

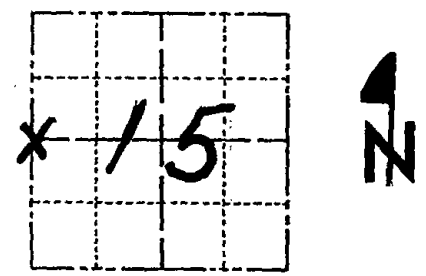


- SET 3/4" x 18" IRON REBAR, 1.50#/FT
- ⊙ FOUND 2-3/8" O.D. IRON PIPE
- ⊕ FOUND HARRISON MONUMENT
- ┌ STEEL FENCE POST
- └ VINYL "T" POST
- ☁ WITNESS TREE

# Government Land Corner Certificate

ADAMS COUNTY County  
 TYPE OF MONUMENT: Harrison Monument  
 STATE PLANE COORDINATES: N \_\_\_\_\_  
 E \_\_\_\_\_  
 ELEVATION — M.S.L. DATUM: \_\_\_\_\_  
 THETA ANGLE: \_\_\_\_\_  
 FIELD BOOK: 57 PAGE 10  
 DRAWN BY: G. Rhinehart

CORNER NO. 57  
 SECTION 15  
 TOWN 17  
 RANGE 7



LOCATION  
 (Indicated by 'X')

## BASIS FOR MONUMENT LOCATION

Show info such as: History of corner, with reference to Vol. and pg., dates, surveyor; exact description of monument replaced; if location computed, by taped or EDM traverse; landowner remarks, etc. (Use reverse side if necessary)

Set Harrison proportionate on line between the NW corner and the SW corner of Section 15. This corner was set after an extensive EDM/T2 traverse was run and carefully analyzed.

Note: This corner falls quite well in line with the east line of an old cemetery just south of here. (per A. Kiedrowski)

SEAL:



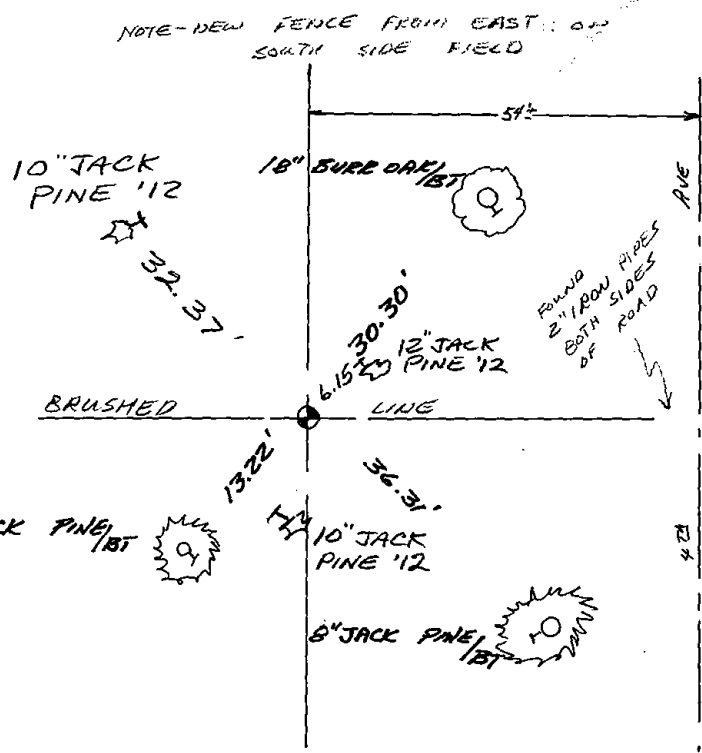
DATA SHOWN HERE ON CERTIFIED CORRECT:

*Dale C. Hagen*  
 Registered Land Surveyor

DATE: 4-19-79

## TIE SKETCH

Show at least four ties, also fence lines, roads, topo, size and type of witness trees and if off road - best way to arrive at corner.



## MAINTENANCE RECORD

Date	Init.	Remarks
5-26-82	PK-SS	O.K.
1-23-87	SL-SS	OK
1-2-92	GR-JG	OK
1-29-97	CR-VG	TIES OK
2-06-02	JG	OK
9-17-07	JG	OK
1-27-12	MS	3 NEW TIES