

15  
SECTION

17  
TOWN

07  
RANGE

# ADAMS COUNTY

COUNTY CORNER NO: 58

ROMPORTOL ID: 41707152000

## PUBLIC LAND SURVEY MONUMENT RECORD

TYPE OF MONUMENT: HARRISON (BROKEN-TOP)  
ADAMS COUNTY COORDINATES, NAD 83 (2007)

N. 211020.871

E. 578399.739

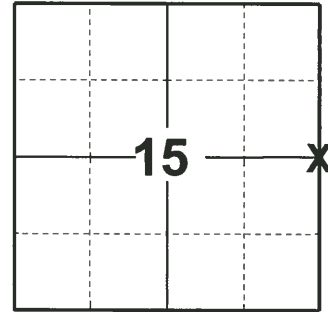
ELEVATION-      DATUM     

FIELD WORK DATE: 04/04/2019

### BASIS FOR MONUMENT LOCATION

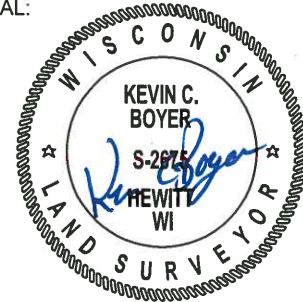
1978 - PLS 878 RAN EDM/T2 TRAVERSE AROUND SECTIONS 14 AND 15 TO DETERMINE SEARCH AREAS FOR INVESTIGATION. COULD FIND NO EVIDENCE OF THE ORIGINAL CORNER OR ANY SUBSEQUENT MONUMENTATION. COULD FIND NO BEARING TREES. WELL ESTABLISHED FENCE CORNER IS THE BEST EVIDENCE OF THE LOCATION OF THE CORNER. ESTABLISHED CORNER AT THE FENCE CORNER.

2019 - PLS 2675 FOUND HARRISON (BROKEN-TOP) 6" BELOW THE GROUND AND 1 TIE. THE MONUMENT AGREES WITH THE TIE. ACCEPTED THE HARRISON (BROKEN-TOP) AS THE CORNER LOCATION. SET 3 NEW TIES AND MEASURED TO THE EXISTING TIE.



LOCATION  
(INDICATE CORNER BY "X")

SEAL:

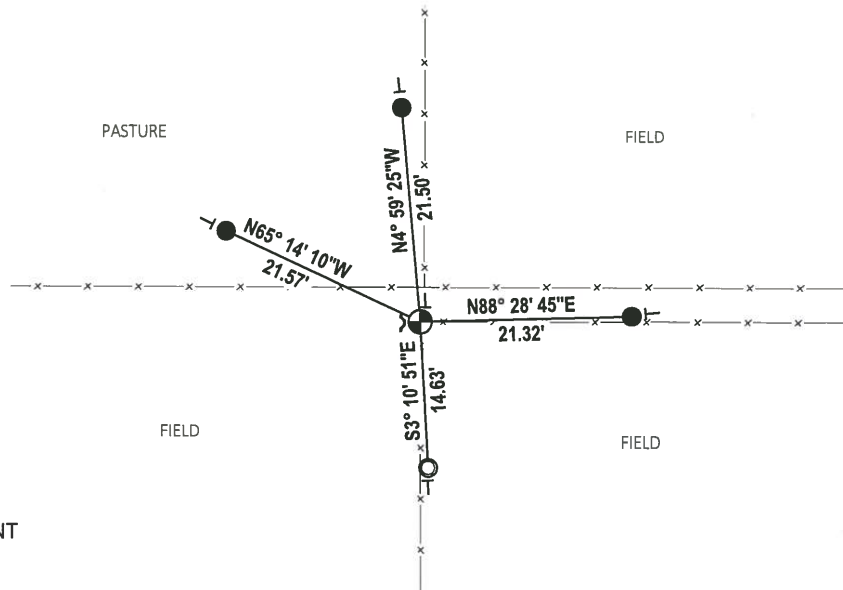


DATA SHOWN HERE ON THIS TIE SHEET IS CORRECT AND COMPLETE TO THE BEST OF MY KNOWLEDGE AND BELIEF.

PROFESSIONAL LAND SURVEYOR

DATE 5/1/19

### TIE SKETCH

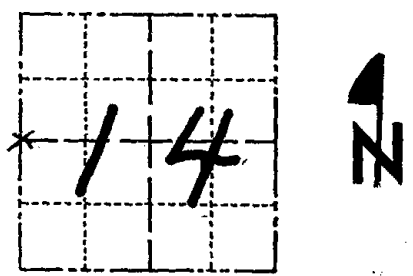


- SET 3/4" x 18" IRON REBAR, 1.50#/FT
- FOUND 1-1/4" O.D. IRON PIPE
- ⊕ FOUND HARRISON (BROKEN-TOP) MONUMENT
- ┌ STEEL FENCE POST
- └ VINYL "T" POST

# Government Land Corner Certificate

ADAMS County  
 TYPE OF MONUMENT: NAIL DISC IN TOP OF FENCE POST  
 STATE PLANE COORDINATES: N \_\_\_\_\_  
 E \_\_\_\_\_  
 ELEVATION — M.S.L. DATUM: \_\_\_\_\_  
 THETA ANGLE: \_\_\_\_\_  
 FIELD BOOK: 57 PAGE 10  
 DRAWN BY: G. RHINEHART

CORNER NO. 58<sup>58</sup>  
 SECTION 14  
 TOWN 17  
 RANGE 7



LOCATION  
(Indicated by 'X')

## BASIS FOR MONUMENT LOCATION

Show info such as: History of corner, with reference to Vol. and pg., dates, surveyor; exact description of monument replaced; if location computed, by taped or EDM traverse; landowner remarks, etc. (Use reverse side if necessary)

SEAL:



DATA SHOWN HERE ON  
CERTIFIED CORRECT:

Anthony B. Kiedrowski  
Registered Land Surveyor

DATE: 9/6/78

Ran EDM/T2 Traverse around sections 14 and 15 to determine search areas for investigation.

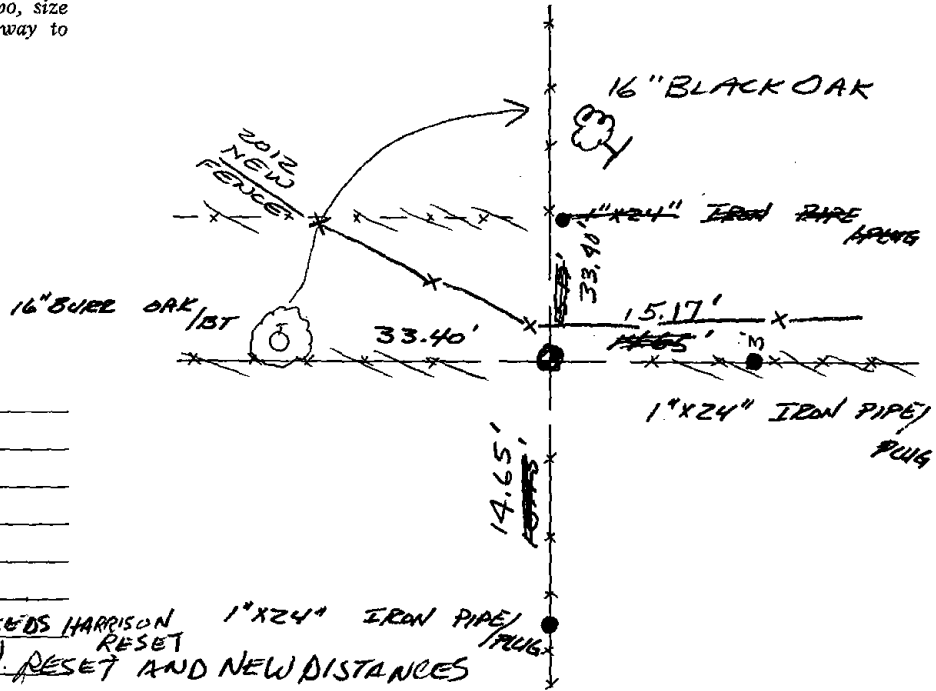
Could find no evidence of the original corner or any subsequent monumentation. Could find no bearing trees.

Well established fence corner is the best evidence of the location of the corner

Established corner at the fence corner.

## TIE SKETCH

Show at least four ties, also fence lines, roads, topo, size and type of witness trees' and if off road - best way to arrive at corner.



## MAINTENANCE RECORD

Date	Init.	Remarks
6-11-82	PK-SS	O.K.
1-23-87	JL-SS	OK
7-27-92	JG	OK
1-29-97	JL-CR	OK
2-27-02	JG	FENCE POST GONE NEEDS HARRISON 1"X24" IRON PIPE/PLUG RESET
9-18-07	JG	HARRISON MON. RESET AND NEW DISTANCES
2-20-12	GR	OK