

14
SECTION

17
TOWN

07
RANGE

ADAMS COUNTY

COUNTY CORNER NO: 59

ROMPORTOL ID: 41707142000

PUBLIC LAND SURVEY MONUMENT RECORD

TYPE OF MONUMENT: HARRISON
ADAMS COUNTY COORDINATES, NAD 83 (2007)

N. 211058.227

E. 583689.371

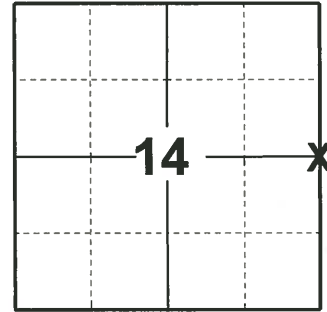
ELEVATION- - - - - DATUM - - - - -

FIELD WORK DATE: 04/04/2019

BASIS FOR MONUMENT LOCATION

1977 - PLS 1103 RAN EDM/T2 TRAVERSE AROUND SECTIONS 14 AND 15 TO DETERMINE SEARCH AREAS FOR INVESTIGATION. COULD FIND NO EVIDENCE OF THE ORIGINAL CORNER OR ANY SUBSEQUENT REMONUMENTATION. COULD FIND NO BEARING TREES. WELL ESTABLISHED FENCE CORNER IS BEST EVIDENCE OF THE LOCATION OF THE CORNER. ESTABLISHED CORNER AT FENCE CORNER. SET HARRISON MONUMENT.

2019 - PLS 2675 FOUND HARRISON FLUSH WITH THE GROUND AND 3 WITNESSES. THE MONUMENT AGREES WITH ALL 3 WITNESSES. ACCEPTED THE HARRISON AS THE CORNER LOCATION. SET 4 NEW TIES AND MEASURED TO THE EXISTING WITNESS.



LOCATION
(INDICATE CORNER BY "X")

SEAL:

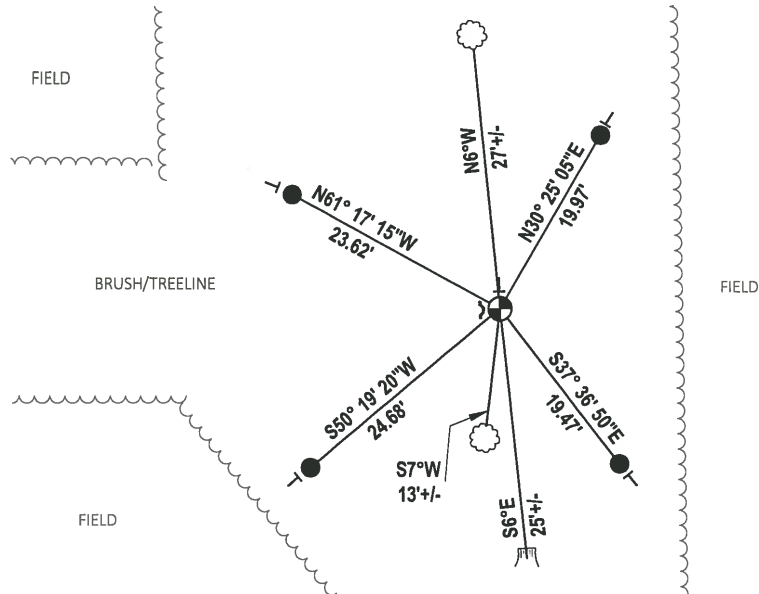
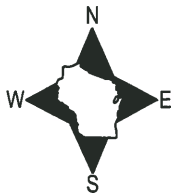


DATA SHOWN HERE ON THIS TIE SHEET IS CORRECT AND COMPLETE TO THE BEST OF MY KNOWLEDGE AND BELIEF.

PROFESSIONAL LAND SURVEYOR

DATE 5/1/19

- TIE SKETCH

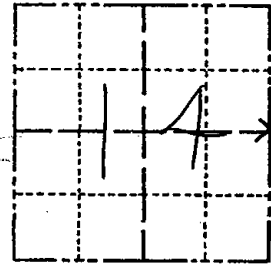


- SET 3/4" x 18" IRON REBAR, 1.50#/FT
- ⊕ FOUND HARRISON MONUMENT
- ↙ STEEL FENCE POST
- └ VINYL "T" POST
- ☼ WITNESS TREE
- ☼ WITNESS STUMP

Government Land Corner Certificate

ADAMS County
 TYPE OF MONUMENT: NAILED 1 1/4" IRON ROD FROM 20' OD POST HARRISON
 STATE PLANE COORDINATES: N _____
 E _____
 ELEVATION — M.S.L. DATUM: _____
 THETA ANGLE: _____
 FIELD BOOK: 57 PAGE 8
 DRAWN BY: G. RHINEHART

CORNER NO. 59
 SECTION 14
 TOWN 17
 RANGE 7



LOCATION
(Indicated by 'X')

BASIS FOR MONUMENT LOCATION

Show info such as: History of corner, with reference to Vol. and pg., dates, surveyor; exact description of monument replaced; if location computed, by taped or EDM traverse; landowner remarks, etc. (Use reverse side if necessary)

Ran EDM/T2 traverse around Sections 14 and 15 to determine search areas for investigation. Could find no evidence of the original corner or any subsequent remonumentation. Could find no bearing trees. Well established fence corner is best evidence of the location of the corner. Established corner at fence corner. Set Harrisons on July 28, 1977

REPLACED 1 1/4" IRON ROD WITH HARRISON MONUMENT, TIES OK 8/28/98 - JG

SEAL:



DATA SHOWN HERE ON
CERTIFIED CORRECT:

Dale Hagen
Registered Land Surveyor

DATE: August 2, 1977

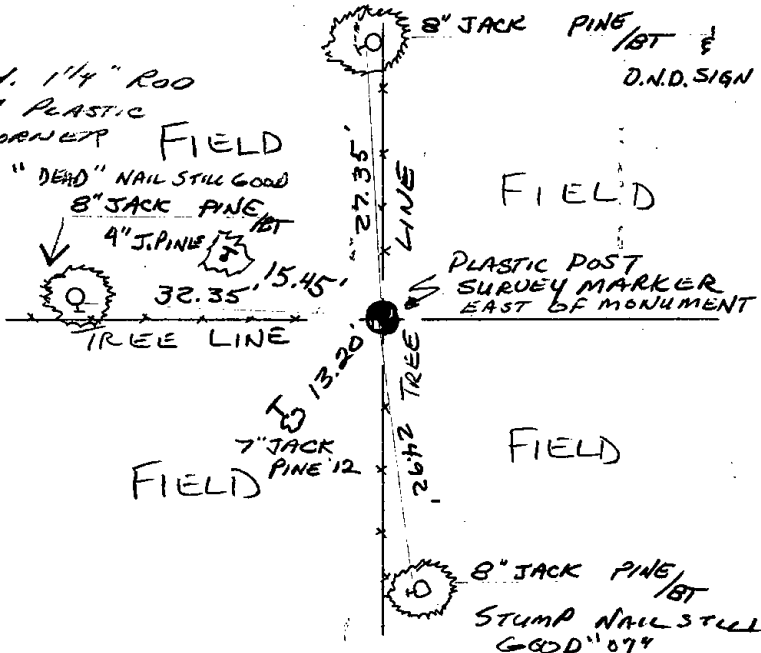
TIE SKETCH

Show at least four ties, also fence lines, roads, topo, size and type of witness trees' and if off road - best way to arrive at corner.

NOTE

Ties in trees to nail in disc.

12-1-97 Fd. 1 1/4" ROD
STEEL POST & PLASTIC
POST AT CORNER



MAINTENANCE RECORD

Date	Init.	Remarks
8-17-82	PK-SS	O.K.
3-18-87	SS	TIES O.K.
1-6-92	GR-JG	OK
12-1-97	JG-SS	TIES O.K.
8-28-98	JG	SET HARRISON TIES OK
2-27-02	JG	1-NEW TIE, MON OK
9-18-07	JG	OK 1 NEW TIE 2 1/2 1/2 GR
REVISD 1977	OK-2/20/12	GR