

## PUBLIC LAND SURVEY MONUMENT RECORD

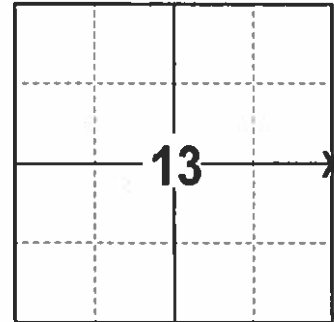
TYPE OF MONUMENT: HARRISON  
 ADAMS COUNTY COORDINATES, NAD 83 (2007)

N. 211117.351

E. 588971.899

ELEVATION- --- DATUM ---

FIELD WORK DATE: 1/16/2017



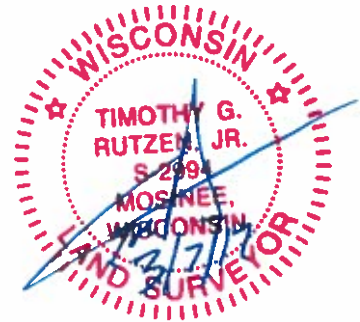
**LOCATION**  
 (INDICATE CORNER BY "X")

### BASIS FOR MONUMENT LOCATION

1981 - PLS 878 FOUND A 1 INCH IRON PIPE THAT WAS USED IN PREVIOUS SURVEYS. A TRAVERSE OF SECTION 13 INDICATED THE PIPE WAS IN THE CORRECT LOCATION. REPLACED THE 1 INCH IRON PIPE WITH A HARRISON.

2017 - PLS 2994 FOUND EXISTING HARRISON AT THE SURFACE AND 2 EXISTING WITNESSES. THE HARRISON AGREES WITH EXISTING WITNESSES. ACCEPTED HARRISON AND SET 4 NEW TIES.

SEAL:



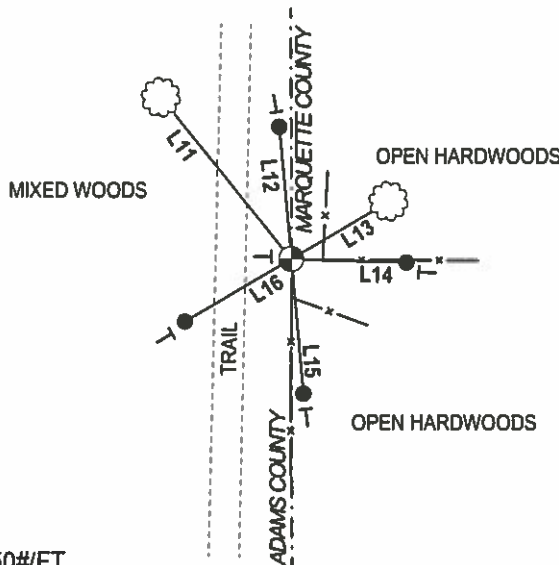
DATA SHOWN HERE ON THIS TIE SHEET IS CORRECT AND COMPLETE TO THE BEST OF MY KNOWLEDGE AND BELIEF.

PROFESSIONAL LAND SURVEYOR

DATE 3/7/17

### - TIE SKETCH -

NOTE: THE CORNER FALLS 16.5' EAST OF THE TRAIL.



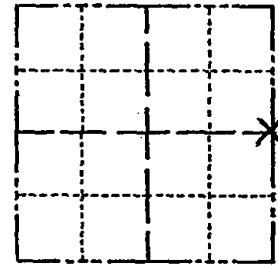
- 3/4" x 18" IRON REBAR SET, 1.50#/FT
- ⊕ FOUND HARRISON
- └ VINYL "T" POST
- ☼ FOUND WITNESS TREE

LINE	BEARING	DISTANCE
L11	N 39°02' W	54.0±
L12	N 05°10'57" W	34.42'
L13	N 59°44' E	30.5±
L14	S 88°18'43" E	30.01'
L15	S 05°05'22" E	35.01'
L16	S 59°49'16" W	32.21'

# Government Land Corner Certificate

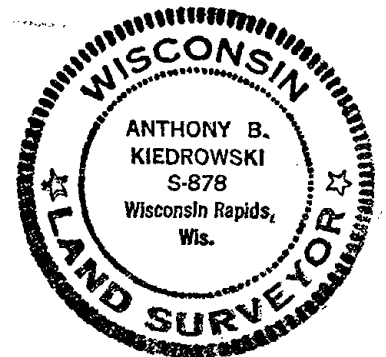
ADAMS County  
 TYPE OF MONUMENT: Harrison  
 STATE PLANE COORDINATES: N \_\_\_\_\_  
 E \_\_\_\_\_  
 ELEVATION — M.S.L. DATUM: \_\_\_\_\_  
 THETA ANGLE: \_\_\_\_\_  
 FIELD BOOK: 54 PAGE 69A  
 DRAWN BY: STEVEN KIEDROWSKI

CORNER NO. 60  
 SECTION 13  
 TOWN 17  
 RANGE 7



LOCATION  
(Indicated by 'X')

SEAL:



DATA SHOWN HERE ON  
CERTIFIED CORRECT:

*Anthony B. Kiedrowski*  
Registered Land Surveyor

DATE: 1/29/81

## TIE SKETCH

Show at least four ties, also fence lines, roads, topo, size and type of witness trees and if off road - best way to arrive at corner.

