

13  
SECTION

17  
TOWN

06  
RANGE

# ADAMS COUNTY

COUNTY CORNER NO: 73

ROMPORTOL ID: 41706130000

## PUBLIC LAND SURVEY MONUMENT RECORD

TYPE OF MONUMENT: HARRISON  
ADAMS COUNTY COORDINATES, NAD 83 (2007)

N. 208369.416

E. 557419.495

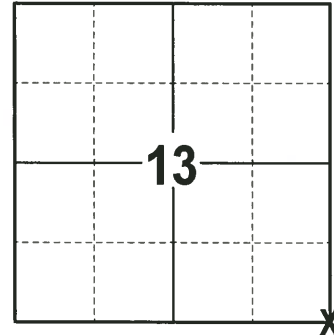
ELEVATION- \_\_\_\_\_ DATUM \_\_\_\_\_

FIELD WORK DATE: 12/05/2017

### BASIS FOR MONUMENT LOCATION

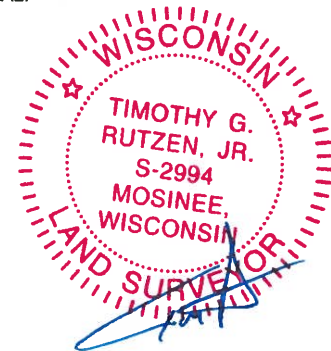
1972 - PLS 878 CORNER WAS ESTABLISHED BY TRAVERSING THE ENTIRE SECTION AND COMPARING POSSESSION LINES AND GOVERNMENT NOTES. CORNER FALLS 37 FEET SOUTH OF AN EXISTING FENCE CORNER. COULD NOT ACCEPT THE FENCE CORNER AS EVIDENCE SINCE THERE IS A PREPONDERANCE OF EVIDENCE TO THE CONTRARY. WE SEARCHED BOTH IN THE VICINITY OF THE FENCE CORNER AND IN THE CALCULATED LOCATION AS SET, BUT FOUND NO MARKER EVIDENCE. SET A HARRISON MONUMENT AT THE CALCULATED LOCATION AND TIED OUT.

2017 - PLS 2994 FOUND A HARRISON MONUMENT 2" ABOVE THE GROUND SURFACE AND 1 WITNESS. THE MONUMENT AGREES WITH THE EXISTING WITNESS. ACCEPTED THE HARRISON MONUMENT AS THE CORNER LOCATION. SET 4 NEW TIES AND MEASURED TO THE TIES AND WITNESS.



LOCATION  
(INDICATE CORNER BY "X")

SEAL:

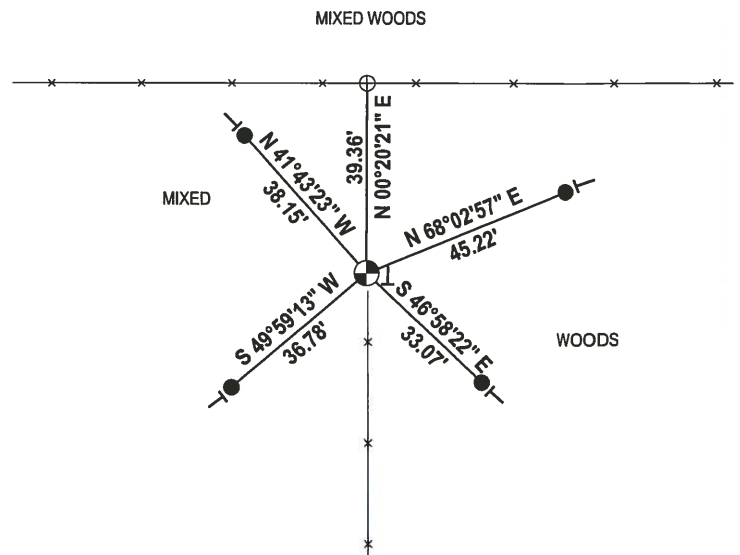
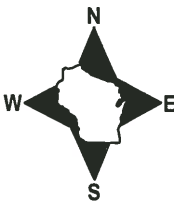


DATA SHOWN HERE ON THIS TIE SHEET IS CORRECT AND COMPLETE TO THE BEST OF MY KNOWLEDGE AND BELIEF.

PROFESSIONAL LAND SURVEYOR

DATE 1-4-18

### - TIE SKETCH



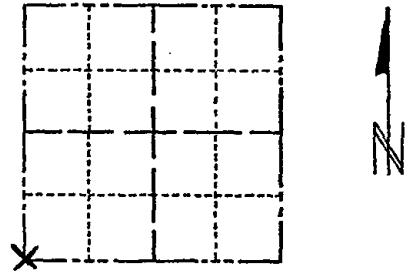
- 3/4" x 18" IRON REBAR SET, 1.50#/FT
- ⊕ WITNESS FENCE CORNER POST FOUND
- ⊙ HARRISON FOUND
- VINYL "T" POST

ADAMS COUNTY

CORNER NO. 195  
SECTION 18  
TOWN 17  
RANGE 7

Survey Monument Record

TYPE OF MONUMENT: HARRISON MONUMENT  
STATE PLANE COORDINATES: N \_\_\_\_\_  
E \_\_\_\_\_  
ELEVATION — M.S.L. DATUM: \_\_\_\_\_  
THETA ANGLE: \_\_\_\_\_  
FIELD BOOK: \*2\* 102 PAGE 63



LOCATION  
(Indicated by 'X')

SEAL:



BASIS FOR MONUMENT LOCATION

(Use reverse side if necessary)

Show info such as: History of corner, with reference to Vol. and pg. dates, surveyor; exact description of monument replaced; if location computed, by taped or EDM traverse; landowner remarks, etc.

Location of this corner was determined by traverseing.

September 21, 1972

Anthony B. Kiedrowski R.L.S. 878

This point established by traversing the entire section and comparing possession lines and government notes. I note that this point falls 37 feet south of an existing fence corner. I cannot accept the fence corner as evidence since there is a preponderance of evidence to the contrary. We searched both in the vicinity of the fence corner and in corner as set, but found no marker evidence.

CERTIFIED CORRECT:

*Anthony B. Kiedrowski*  
Registered Land Surveyor

DATE: 1-30-73

CORNER O.K. 3-15-77 GR-SS  
" " 8-17-82 PK-SS

TIE SKETCH

(Show at least four ties)

