

18
SECTION

17
TOWN

07
RANGE

ADAMS COUNTY

COUNTY CORNER NO: 62
ROMPORTOL ID: 41707180020

PUBLIC LAND SURVEY MONUMENT RECORD

TYPE OF MONUMENT: HARRISON (BROKEN-TOP)
ADAMS COUNTY COORDINATES, NAD 83 (2007)

N. 208405.465

E. 559847.162

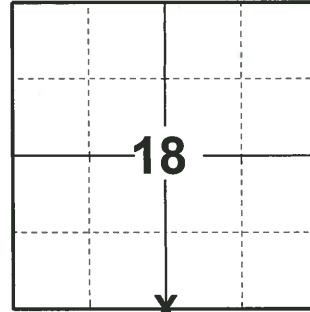
ELEVATION- - - - - DATUM - - - - -

FIELD WORK DATE: 04/16/2019

BASIS FOR MONUMENT LOCATION

1973 - PLS 878 SET BY RETRACEMENT OF DEER RUN ACRES BY S. MULLEN. TRAVERSE OF ENTIRE SECTION INDICATED THIS TO BE TRUE LOCATION. COULD NOT JUSTIFY THE FENCE CORNER LOCATION IN ANY WAY.

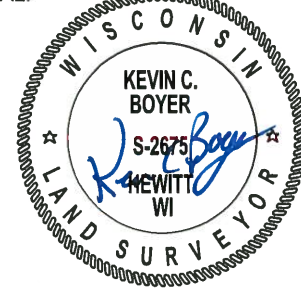
2019 - PLS 2675 FOUND HARRISON (BROKEN-TOP) 8" BELOW THE GROUND AND 2 WITNESSES. THE MONUMENT AGREES WITH BOTH FOUND WITNESSES. ACCEPTED THE HARRISON (BROKEN-TOP) AS THE CORNER LOCATION. SET 4 NEW TIES AND MEASURED TO THE EXISTING WITNESSES.



LOCATION

(INDICATE CORNER BY "X")

SEAL:



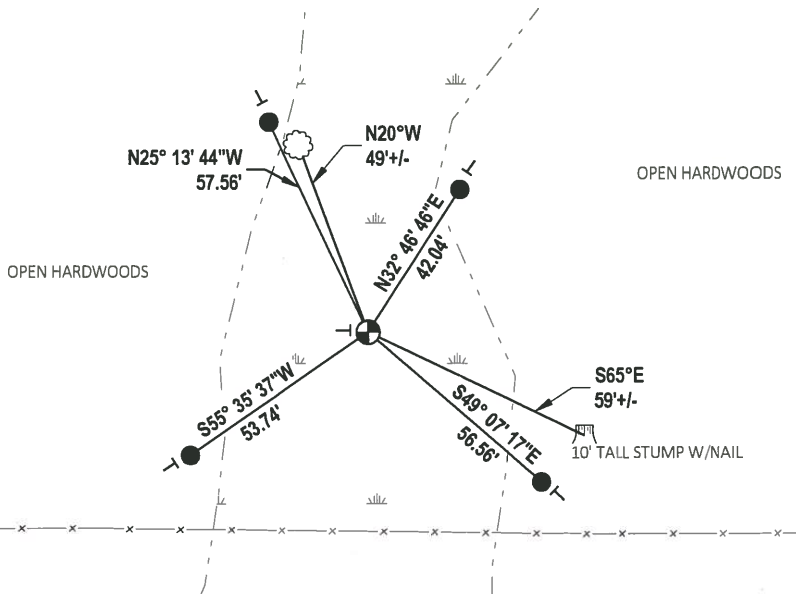
DATA SHOWN HERE ON THIS TIE SHEET IS CORRECT AND COMPLETE TO THE BEST OF MY KNOWLEDGE AND BELIEF.

PROFESSIONAL LAND SURVEYOR

DATE 5/1/19

- TIE SKETCH

NOTE: THE CORNER FALLS ±49' NORTH OF THE FENCE LINE.



- SET 3/4" x 18" IRON REBAR, 1.50#/FT
- ⊕ FOUND HARRISON (BROKEN-TOP) MONUMENT
- VINYL "T" POST
- ☉ WITNESS TREE

ADAMS COUNTY

CORNER NO. 221
 SECTION 18
 TOWN 19
 RANGE 7

Survey Monument Record

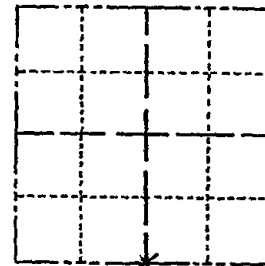
TYPE OF MONUMENT: Harrison standard

STATE PLANE COORDINATES: N _____
E _____

ELEVATION — M.S.L. DATUM: _____

THETA ANGLE: _____

FIELD BOOK: 107 PAGE 35



LOCATION
(Indicated by 'X')

SEAL:



BASIS FOR MONUMENT LOCATION

(Use reverse side if necessary)

Show info such as: History of corner, with reference to Vol. and pg, dates, surveyor; exact description of monument replaced; if location computed, by taped or EDM traverse; landowner remarks, etc.

Set by retracement of Deer Run acres by Sam Mullen. Traverse of entire section indicates this to be true location. We could not justify the fence corner location in any way,

OVER
 3-24-87 TIES OK
 CORNER INUNDATED
 GR

1-6-92 GR-JG - OK

10-28-97 JG ALL OK
1-GONE, 1-NEW, COR OK, 2-13-02-JG

CERTIFIED CORRECT:

Anthony B. Kiedrowski
 Registered Land Surveyor

DATE: 2-22-73

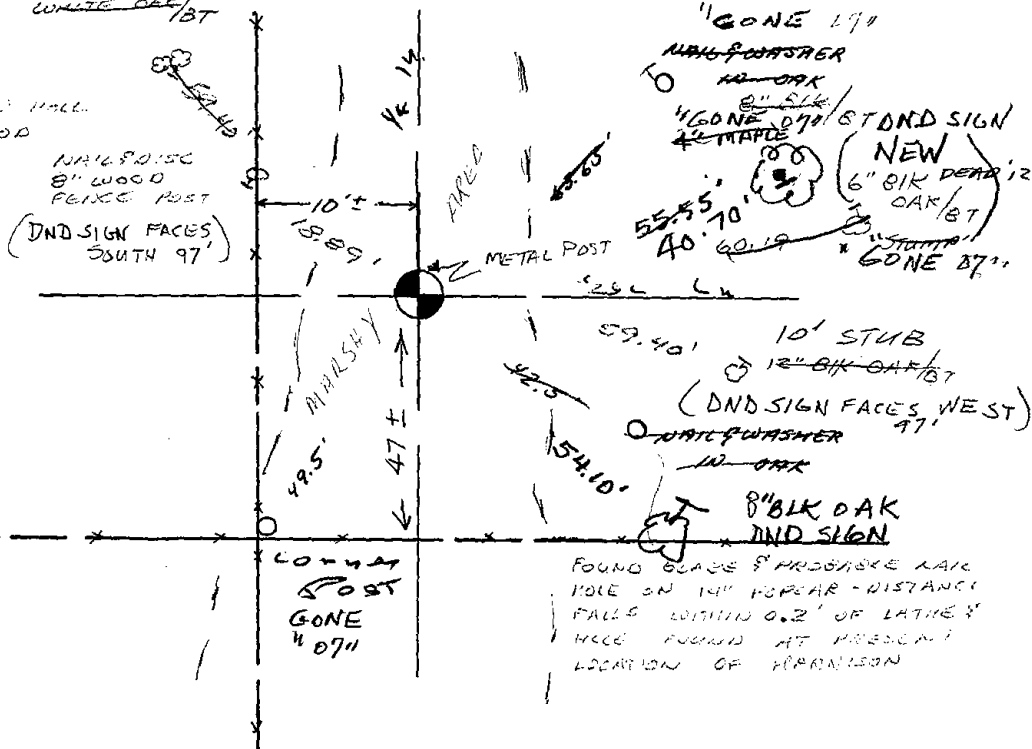
TIE SKETCH

(Show at least four ties)

SCPT. '82 PR-55
 MON. CORNER - FOUND SHALLOW HOLE
 1 1/2 x 2 1/2 - AND PIECE OF WOOD
 LATHE IN MOLE ABOUT
 15" BELOW SURFACE - RESULT
 HARRISON FROM EVIDENCE
 AND ST NORTHEAST AND
 FENCE CORNER POST

"GONE 07"
 TRAIL SIGN
 WHITE OAK/BT

2-LONE, 2-NEW 9-13-07-JG





6" BLACK
OAK '12

49.3
E 120° W

NAIL/DISC
WOOD FENCE
POST

18.85

10'

38.4
EAST

6" BLACK
OAK '12

4.7

57.10

8" BLACK
OAK

