

16  
SECTION

17  
TOWN

07  
RANGE

# ADAMS COUNTY

COUNTY CORNER NO: 67  
ROMPORTOL ID: 41707160000

## PUBLIC LAND SURVEY MONUMENT RECORD

TYPE OF MONUMENT: HARRISON (BROKEN-TOP)  
ADAMS COUNTY COORDINATES, NAD 83 (2007)

N. 208388.587

E. 573118.195

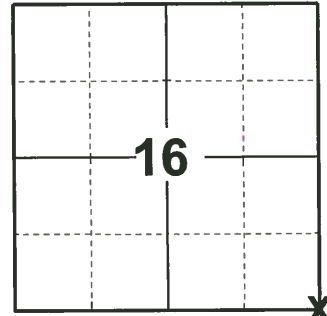
ELEVATION- - - - - DATUM - - - - -

FIELD WORK DATE: 04/10/2019

### BASIS FOR MONUMENT LOCATION

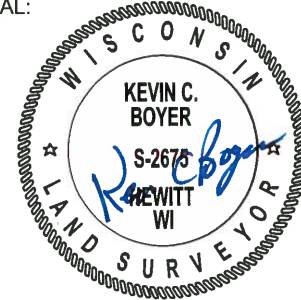
1976 - PLS 1103 A. KIEDROWSKI, COUNTY SURVEYOR, EXCAVATED WITH BACKHOE OPPOSITE FENCE LINE. FOUND 8"X8"X15" STONE WITH CHISEL CROSS IN TOP. REMONUMENTED LOCATION WITH STANDARD HARRISON MONUMENT. LOWERED STONE AND SET HARRISON ON TOP.

2019 - PLS 2675 FOUND HARRISON (BROKEN-TOP) 8" BELOW THE ROAD SURFACE AND 3 WITNESSES. THE MONUMENT AGREES WITH ALL THE EXISTING WITNESSES. ACCEPTED THE HARRISON (BROKEN-TOP) AS THE CORNER LOCATION. SET 4 NEW TIES AND MEASURED TO THE EXISTING WITNESSES.



LOCATION  
(INDICATE CORNER BY "X")

SEAL:



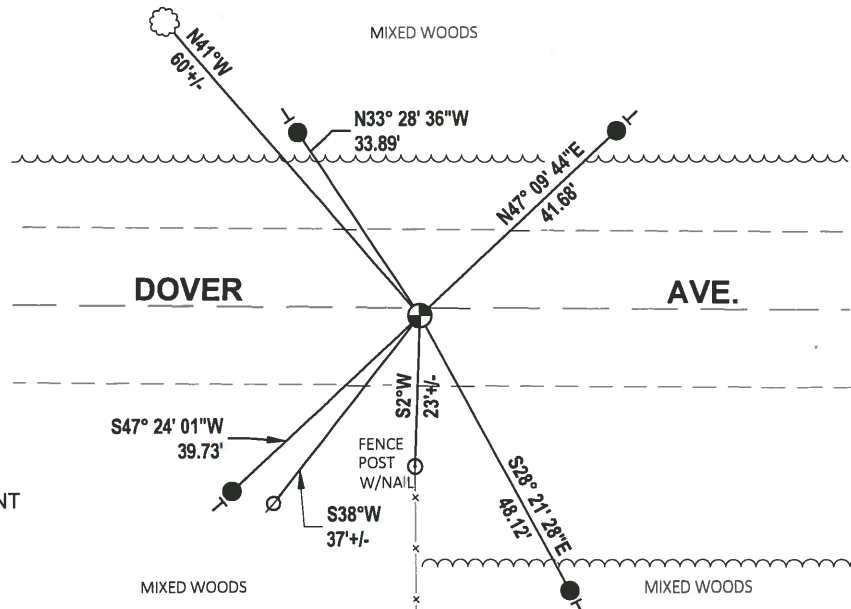
DATA SHOWN HERE ON THIS TIE SHEET IS CORRECT AND COMPLETE TO THE BEST OF MY KNOWLEDGE AND BELIEF.

PROFESSIONAL LAND SURVEYOR

DATE 5/1/19

### - TIE SKETCH

NOTE: THE CORNER FALLS ±2' SOUTH OF DOVER AVE. CENTERLINE.



- SET 3/4" x 18" IRON REBAR, 1.50#/FT
- ⊕ FOUND HARRISON (BROKEN-TOP) MONUMENT
- ⊘ WITNESS POWER POLE
- VINYL "T" POST
- ⊙ WITNESS TREE

ADAMS COUNTY

Survey Monument Record

TYPE OF MONUMENT: HARRISON

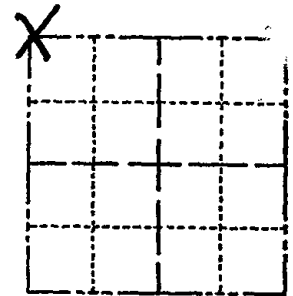
STATE PLANE COORDINATES: N \_\_\_\_\_  
E \_\_\_\_\_

ELEVATION — M.S.L. DATUM: \_\_\_\_\_

THETA ANGLE: \_\_\_\_\_

FIELD BOOK: \_\_\_\_\_ PAGE \_\_\_\_\_

CORNER NO. 680<sup>(67)</sup>  
SECTION 22  
TOWN 17  
RANGE 7



LOCATION  
(Indicated by 'X')

SEAL:



BASIS FOR MONUMENT LOCATION

(Use reverse side if necessary)

Show info such as: History of corner, with reference to Vol. and pg, dates, surveyor; exact description of monument replaced; if location computed, by taped or EDM traverse; landowner remarks, etc.

Anthony B. Kiedrowski, County Surveyor, excavated with backhoe opposite fence line.

Found 8" x 8" x 15" Stone with chisel cross in top.

Remonumented location with Standard Harrison Monument. Lowered stone and set Harrison on top.

CORNER O.K. 3-15-77 GR-SS  
TOP BROKEN - BOTTOM IN PLACE 3-25-82 GR-SS  
NEW TIE 1-23-87 JL-SS  
CORNER OK 12-12-91 KZ-SG  
TIES OK 1-29-97 CR-JG

CERTIFIED CORRECT:

Dale C Hagen  
Registered Land Surveyor

DATE: July 17, 1978

TIE SKETCH 1-GONE, 1-NEW TIE, 2-DT-DR  
1-GONE, 2-NEW, 9-17-87-JG  
(Show at least four ties), NEW TIE 1-27-12 MS

NOTE: Ties in trees to nail in disc.

