

15 SECTION 17 TOWN 07 RANGE

# ADAMS COUNTY

COUNTY CORNER NO: 68  
 ROMPORTOL ID: 41707150020

## PUBLIC LAND SURVEY MONUMENT RECORD

TYPE OF MONUMENT: HARRISON  
 ADAMS COUNTY COORDINATES, NAD 83 (2007)

N. 208380.370  
 E. 575770.587

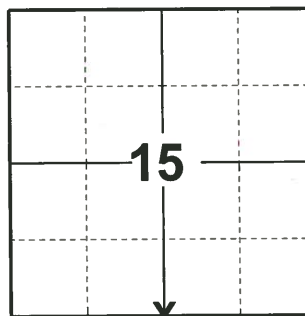
ELEVATION- - - - - DATUM - - - - -

FIELD WORK DATE: 04/04/2019

### BASIS FOR MONUMENT LOCATION

1975 - PLS 1103 RAN EDM/TRANSIT TRAVERSE AROUND SECTIONS 22, 23, AND 24, AND TIED INTO TRAVERSE AROUND SECTION 27. EXCAVATION WITH BACKHOE YIELDED NO EVIDENCE OF THE ORIGINAL CORNER OR ANY SUBSEQUENT REMONUMENTATION. SET CORNER EQUIDISTANT AND ON LINE BETWEEN ADJACENT SECTION CORNERS.

2019 - PLS 2675 FOUND HARRISON IN THE ROAD SURFACE AND 1 WITNESS. THE MONUMENT AGREES WITH THE WITNESS. ACCEPTED THE HARRISON AS THE CORNER LOCATION. SET 4 NEW TIES AND MEASURED TO THE EXISTING WITNESS.



**LOCATION**  
 (INDICATE CORNER BY "X")

SEAL:



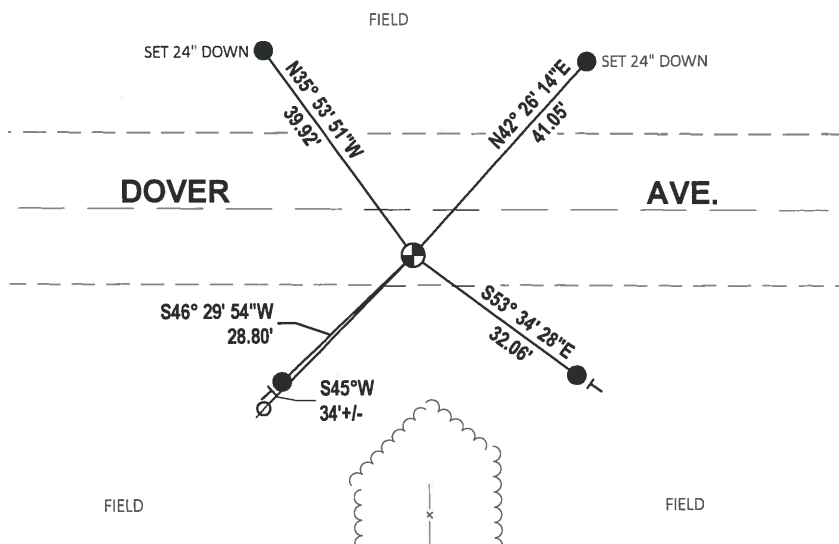
DATA SHOWN HERE ON THIS TIE SHEET IS CORRECT AND COMPLETE TO THE BEST OF MY KNOWLEDGE AND BELIEF.

PROFESSIONAL LAND SURVEYOR

DATE 5/1/19

### - TIE SKETCH

NOTE: THE CORNER FALLS ±7.1' SOUTH OF DOVER AVE. CENTERLINE.



- SET 3/4" x 18" IRON REBAR, 1.50#/FT
- ⊕ FOUND HARRISON MONUMENT
- ⊙ WITNESS POWER POLE
- VINYL "T" POST

# ADAMS COUNTY

## Survey Monument Record

TYPE OF MONUMENT: Standard Harrison

STATE PLANE COORDINATES: N \_\_\_\_\_

E \_\_\_\_\_

ELEVATION — M.S.L. DATUM: \_\_\_\_\_

THETA ANGLE: \_\_\_\_\_

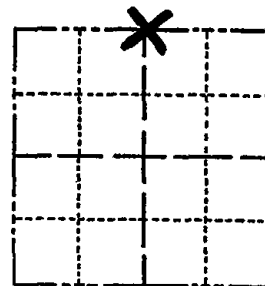
FIELD BOOK: \_\_\_\_\_ PAGE \_\_\_\_\_

CORNER NO. 176

SECTION 22

TOWN 17

RANGE 7



LOCATION  
(Indicated by 'X')

SEAL:

### BASIS FOR MONUMENT LOCATION

(Use reverse side if necessary)

Show info such as: History of corner, with reference to Vol. and pg, dates, surveyor; exact description of monument replaced; if location computed, by taped or EDM traverse; landowner remarks, etc.

Ran EDM/transit traverse around Sections 22,23 and 24, and tied into traverse around Section 27.

Excavation with backhoe yielded no evidence of the original corner or any subsequent remonumentation.

Set corner equidistant and on line between adjacent section corners.



CERTIFIED CORRECT:

*Dale C. Hagen*  
Registered Land Surveyor

DATE: August 7, 1975

CORNER	O.K.	3-28-77	GR-SS
"	"	3-25-82	GR-SS
"	"	1-23-87	JL-SS
"	"	12-12-91	KZ-JC
TIES OK		1-29-77	CR-JG

### TIE SKETCH 1-NEW TIE, MON. OK 2-27-82-JG

OK 9-18-07-JG  
(Show at least four ties) OK 1/27/12 MS

**NOTE:** Ties in trees to nail in disc.

