

15
SECTION

17
TOWN

07
RANGE

ADAMS COUNTY

COUNTY CORNER NO: 69

ROMPORTOL ID: 41707150000

PUBLIC LAND SURVEY MONUMENT RECORD

TYPE OF MONUMENT: HARRISON

ADAMS COUNTY COORDINATES, NAD 83 (2007)

N. 208372.164

E. 578422.559

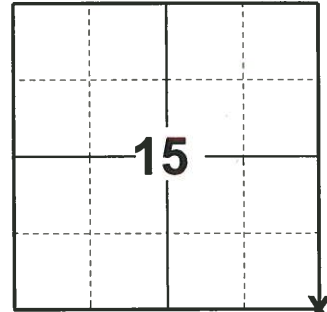
ELEVATION- DATUM

FIELD WORK DATE: 04/03/2019

BASIS FOR MONUMENT LOCATION

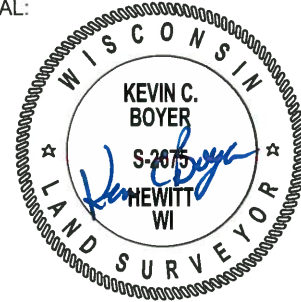
1975 - PLS 1103 RAN EDM/ TRANSIT TRAVERSE AROUND SECTIONS 22, 23, AND 24 TO DETERMINE SEARCH AREAS. EXCAVATION WITH BACKHOE BY A.B. KIEDROWSKI, COUNTY SURVEYOR, YIELDED NO EVIDENCE OF THE ORIGINAL CORNER OR ANY REMONUMENTATON. SET CORNER IN CENTER OF DOVER AVENUE OPPOSITE FENCE LINE TO THE NORTH. LOCATION FITS ORIGINAL NOTE AND INTERIOR SECTION SUBDIVISION OF SECTION 23 WELL.

2019 - PLS 2675 FOUND HARRISON 3" BELOW THE ROAD SURFACE AND 1 TIE. THE MONUMENT AGREES WITH THE EXISTING TIE. ACCEPTED THE HARRISON AS THE CORNER LOCATION. SET 3 NEW TIES AND MEASURED TO THE EXISTING TIE.



LOCATION
(INDICATE CORNER BY "X")

SEAL:



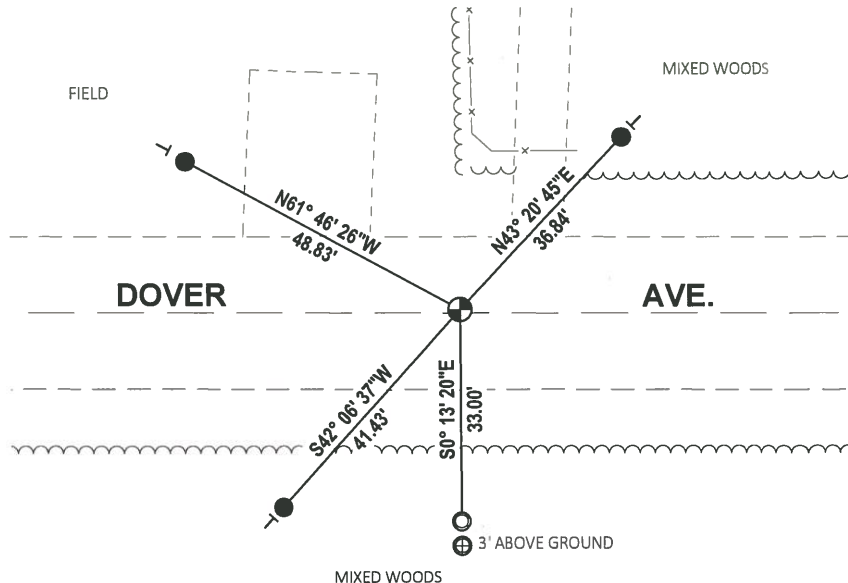
DATA SHOWN HERE ON THIS TIE SHEET IS CORRECT AND COMPLETE TO THE BEST OF MY KNOWLEDGE AND BELIEF.

PROFESSIONAL LAND SURVEYOR

DATE 5/1/19

- TIE SKETCH

NOTE: THE CORNER FALLS ON THE CENTERLINE OF DOVER AVE.



- SET 3/4" x 18" IRON REBAR, 1.50#/FT
- ⊕ FOUND 1" O.D IRON PIPE
- FOUND 1-1/4" O.D. IRON PIPE
- ⊕ FOUND HARRISON MONUMENT
- | VINYL "T" POST

ADAMS COUNTY

Survey Monument Record

TYPE OF MONUMENT: Standard Harrison

STATE PLANE COORDINATES: N _____

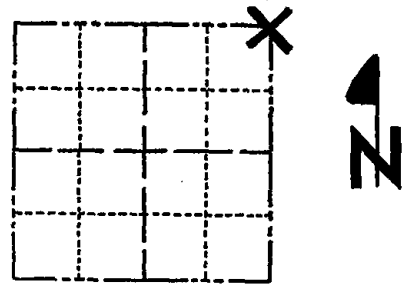
E _____

ELEVATION — M.S.L. DATUM: _____

THETA ANGLE: _____

FIELD BOOK: _____ PAGE _____

CORNER NO. 775
SECTION 22
TOWN 27
RANGE 7



LOCATION
(Indicated by 'X')

SEAL:



BASIS FOR MONUMENT LOCATION

(Use reverse side if necessary)

Show info such as: History of corner, with reference to Vol. and pg, dates, surveyor; exact description of monument replaced; if location computed, by taped or EDM traverse; landowner remarks, etc.

Ran EDM/transit traverse around Sections 22, 23 and 24 to determine search areas.

Excavation with backhoe by A.B. Kiedrowski, County Surveyor, yielded no evidence of the original corner or any remonumentation.

Set corner in center of Dover Avenue opposite fenceline to the North. Location fits original note and interior section subdivision of Section 23 well.

CERTIFIED CORRECT:

Dale C. Hagen
Registered Land Surveyor

DATE: August 7, 1975

CORNER O.K.	3-15-77	GR-SS
" "	3-25-82	GR-SS
" "	1-23-87	JL-SS
1-GONE, 2-NEW	12-12-91	KZ-SG
TIES OK	1-29-97	CR-J4

TIE SKETCH 1-GONE, 2-27-02-J6
OK, 9-18-07-J6
(Show at least four ties) OK 1/27/12 MS

NOTE: Ties in trees to nail in disc.

