

13 SECTION 17 TOWN 07 RANGE

ADAMS COUNTY

COUNTY CORNER NO: 73
ROMPORTOL ID: 41707130000

PUBLIC LAND SURVEY MONUMENT RECORD

TYPE OF MONUMENT: HARRISON (BROKEN TOP)
ADAMS COUNTY COORDINATES, NAD 83 (2007)

N. 208463.566

E. 589006.103

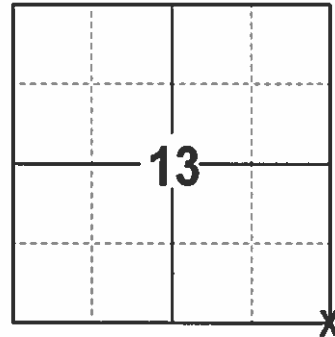
ELEVATION- DATUM

FIELD WORK DATE: 1/12/2017

BASIS FOR MONUMENT LOCATION

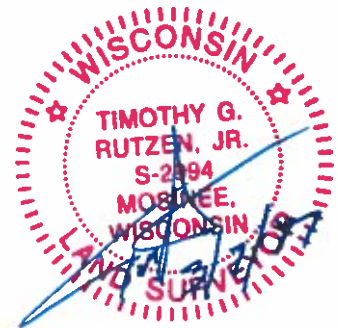
1975 - PLS 878 EXCAVATED AND FOUND A REMNANT OF A 1 INCH DIAMETER WOOD POST WHICH CAME TO A POINT. THE LOCATION WAS VERIFIED BY A TRAVERSE OF THE SECTION AND SET A HARRISON.

2017 - PLS 2994 FOUND EXISTING HARRISON WITH A BROKEN TOP 18 INCHES BELOW THE ROAD SURFACE. NO EXISTING WITNESSES WERE FOUND. ACCEPTED HARRISON AND SET 4 NEW TIES.



LOCATION
(INDICATE CORNER BY "X")

SEAL:

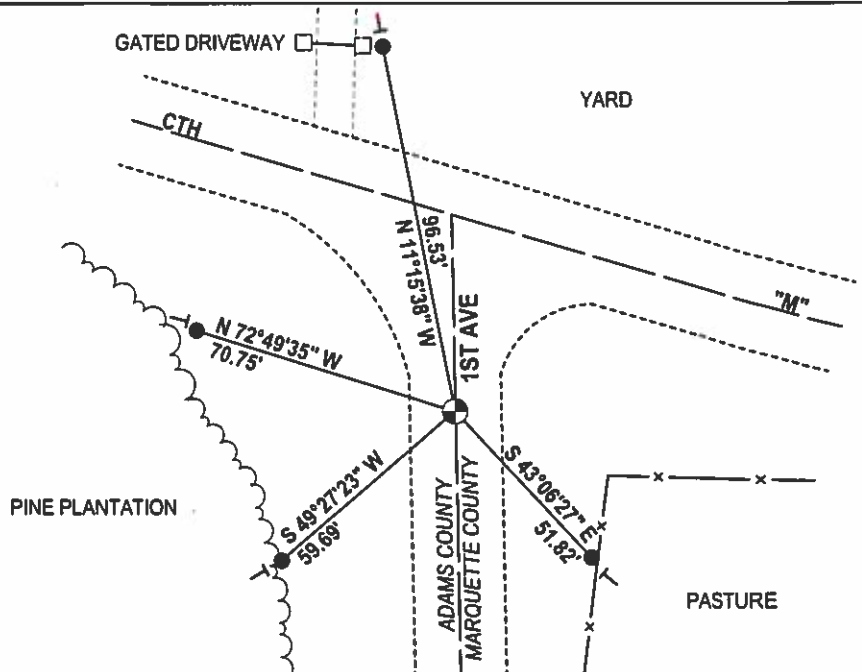
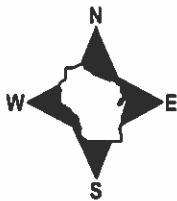


DATA SHOWN HERE ON THIS TIE SHEET IS CORRECT AND COMPLETE TO THE BEST OF MY KNOWLEDGE AND BELIEF.

PROFESSIONAL LAND SURVEYOR

DATE 3/7/17

- TIE SKETCH



- 3/4" x 18" IRON REBAR SET, 1.50#/FT
- ⊙ FOUND HARRISON
- └ VINYL "T" POST

ADAMS COUNTY

Survey Monument Record

TYPE OF MONUMENT: Harrison standard

STATE PLANE COORDINATES: N _____

E _____

ELEVATION — M.S.L. DATUM: _____

THETA ANGLE: _____

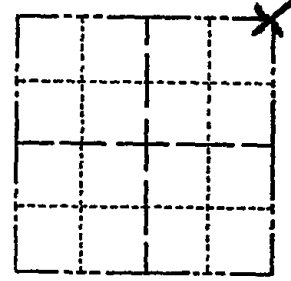
FIELD BOOK: 101 PAGE 3

CORNER NO. 805

SECTION 24

TOWN 17

RANGE 7



LOCATION
(Indicated by 'X')

SEAL:



BASIS FOR MONUMENT LOCATION

(Use reverse side if necessary)

Show info such as: History of corner, with reference to Vol. and pg, dates, surveyor; exact description of monument replaced; if location computed, by taped or EDM traverse; landowner remarks, etc.

Excavated with backhoe. Found remnant of 2" dia wood post, which came to a point. Location verified by an EDM traverse of the section. Monumented this point. No re-surveys of record or other evidence of the corner.

CORNER	O.K.	3-28-77	GR-55
"	"	4-20-82	GR-55
"	"	1-22-87	JL-55
"	"	1-2-92	GR-36
"	"	10-28-97	JG
"	"	2-21-02	JG

CERTIFIED CORRECT:

Anthony B. Kiedrowski
Registered Land Surveyor

DATE: 7/17/75

TIE SKETCH

3-TIES LEFT, CHECK E.L. SURVEYS, 9-18-07 JG

OK 1/27/12 MS

Ties are to nails.

(Show at least four ties)

