

PUBLIC LAND SURVEY MONUMENT RECORD

TYPE OF MONUMENT: HARRISON (BROKEN-TOP)
 ADAMS COUNTY COORDINATES, NAD 83 (2007)

N. 205724.151

E. 567848.776

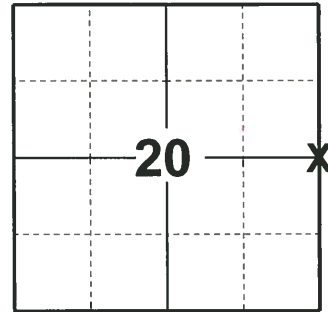
ELEVATION- _____ DATUM _____

FIELD WORK DATE: 04/17/2019

BASIS FOR MONUMENT LOCATION

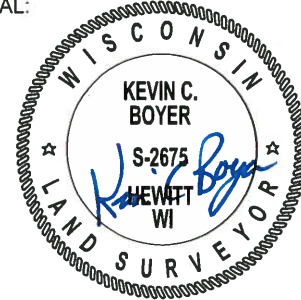
1979 - PLS 878 EXCAVATED WITH BACKHOE. FOUND 4"X8"X18" DUG IN DIAMOND SHAPED GRANITE STONE WITH ROTTED 3" DIAMETER POST ALONGSIDE. RECORD CALLS FOR STONE AS THE CORNER. MOVED STONE SLIGHTLY EAST AND SET HARRISON AT CORNER MARKED BY STONE. STONE CALLED FOR BY Z. WISE, 1878.

2019 - PLS 2675 FOUND HARRISON (BROKEN-TOP) 12" BELOW THE ROAD SURFACE AND 1 WITNESS. THE MONUMENT AGREES WITH THE WITNESS. ACCEPTED THE HARRISON (BROKEN-TOP) AS THE CORNER LOCATION. SET 4 NEW TIES AND MEASURED TO THE EXISTING WITNESS.



LOCATION
 (INDICATE CORNER BY "X")

SEAL:



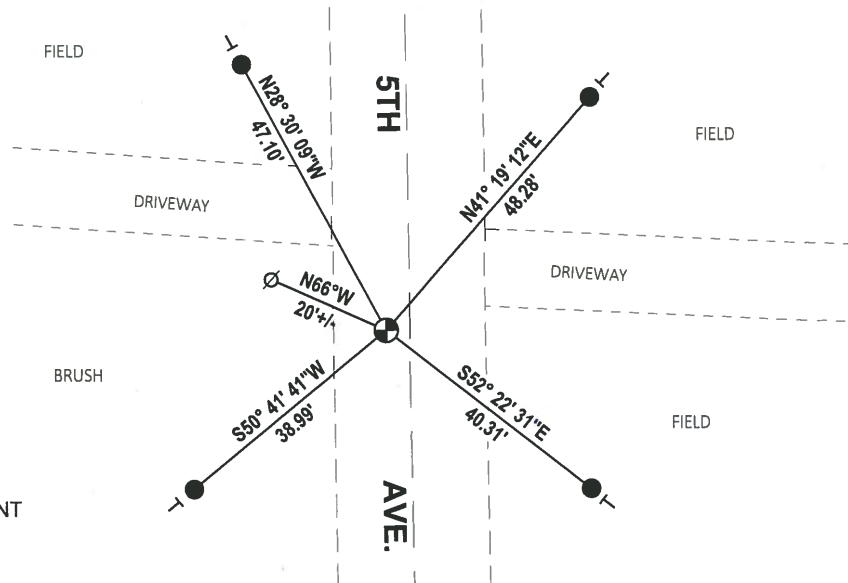
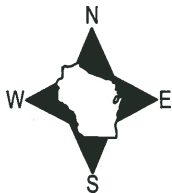
DATA SHOWN HERE ON THIS TIE SHEET IS CORRECT AND COMPLETE TO THE BEST OF MY KNOWLEDGE AND BELIEF.

PROFESSIONAL LAND SURVEYOR

DATE 5/1/19

- TIE SKETCH

NOTE: THE CORNER FALLS ±4' WEST OF 5TH AVE CENTERLINE.

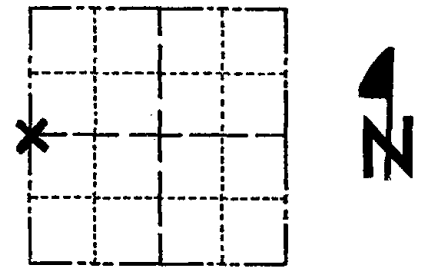


- SET 3/4" x 18" IRON REBAR, 1.50#/FT
- ⊕ FOUND HARRISON (BROKEN-TOP) MONUMENT
- ∅ WITNESS POWER POLE
- VINYL "T" POST

Government Land Corner Certificate

ADAMS County
 TYPE OF MONUMENT: HARRISON
 STATE PLANE COORDINATES: N _____
 E _____
 ELEVATION — M.S.L. DATUM: _____
 THETA ANGLE: _____
 FIELD BOOK: 54 (102) PAGE 55 (23)
 DRAWN BY: LANCE J. HABECK

CORNER NO. 76
 SECTION 21
 TOWN 17
 RANGE 7



LOCATION
(Indicated by 'X')

BASIS FOR MONUMENT LOCATION

Show info such as: History of corner, with reference to Vol. and pg., dates, surveyor; exact description of monument replaced; if location computed, by taped or EDM traverse; landowner remarks, etc. (Use reverse side if necessary)

Excavated with backhoe. Found 4 x 8 x 18" dug in diamond shaped granite stone with rotted 3" diameter post alongside. Record calls for stone as the corner. Moved stone slightly east and set Harrison at corner marked by stone.

Stone called for by Z. Wise, 1878
per old Field Book #2 p 141

SEAL:



DATA SHOWN HERE ON
CERTIFIED CORRECT:

Anthony B. Kiedrowski
Registered Land Surveyor

DATE: 6/13/79

TIE SKETCH

Show at least four ties, also fence lines, roads, topo, size and type of witness trees and if off road - best way to arrive at corner.

