

22
SECTION

17
TOWN

07
RANGE

ADAMS COUNTY

COUNTY CORNER NO: 78

ROMPORTOL ID: 41707222000

PUBLIC LAND SURVEY MONUMENT RECORD

TYPE OF MONUMENT: HARRISON
ADAMS COUNTY COORDINATES, NAD 83 (2007)

N. 205731.205

E. 578442.642

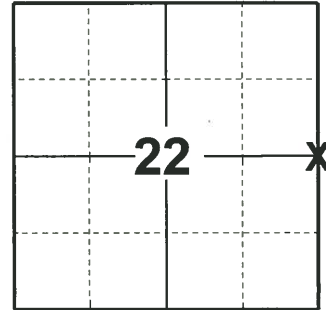
ELEVATION- - - - - DATUM - - - - -

FIELD WORK DATE: 04/16/2019

BASIS FOR MONUMENT LOCATION

1976 - PLS 1103 RAN EDM/TRANSIT TRAVERSE AROUND SECTIONS 22, 23, AND 24, AND PORTIONS OF THE ADJACENT SECTION. COULD FIND NO EVIDENCE OF THE ORIGINAL CORNER OR ANY REMONUMENTATION. SET CORNER PROPORTIONATELY AND ON LINE BETWEEN THE ADJACENT SECTION CORNERS.

2019 - PLS 2675 FOUND HARRISON 6" ABOVE THE GROUND AND DID NOT RECOVER ANY TIES OR WITNESSES. ACCEPTED THE HARRISON AS THE CORNER LOCATION AND SET 4 NEW TIES.



LOCATION
(INDICATE CORNER BY "X")

SEAL:



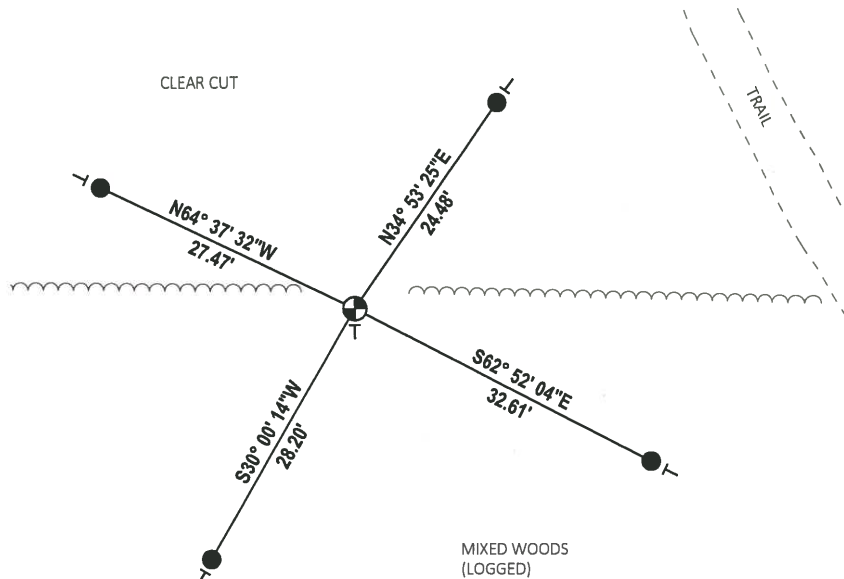
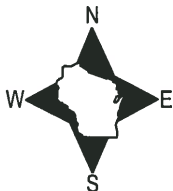
DATA SHOWN HERE ON THIS TIE SHEET IS CORRECT AND COMPLETE TO THE BEST OF MY KNOWLEDGE AND BELIEF.

PROFESSIONAL LAND SURVEYOR

DATE 5/1/19

- TIE SKETCH

NOTE: THE CORNER FALLS 50'± WEST OF THE TRAIL.



- SET 3/4" x 18" IRON REBAR, 1.50#/FT
- ⊕ FOUND HARRISON MONUMENT
- VINYL "T" POST

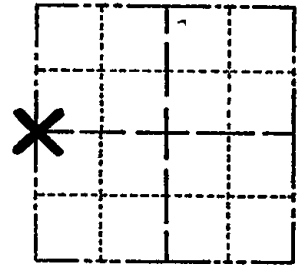
MIXED WOODS
(LOGGED)

ADAMS COUNTY

Survey Monument Record

TYPE OF MONUMENT: Standard Harrison
STATE PLANE COORDINATES: N 43°55'49.7"
HAND HELD NAVIGATION RW 89°38'16.3"
ELEVATION - M.S.L. DATUM:
THETA ANGLE:
FIELD BOOK: PAGE

CORNER NO. 934 (78)
SECTION 23
TOWN 17
RANGE 7



BASIS FOR MONUMENT LOCATION

(Use reverse side if necessary)

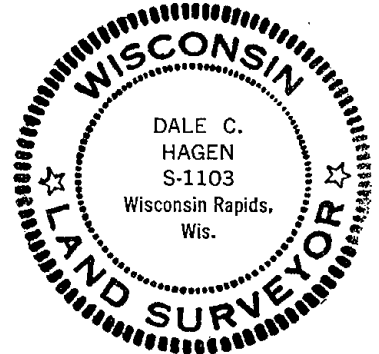
Show info such as: History of corner, with reference to Vol. and pg, dates, surveyor; exact description of monument replaced; if location computed, by taped or EDM traverse; landowner remarks, etc.

Ran EDM/transit traverse around sections 22, 23 and 24, and portions of the adjacent section.

Could find no evidence of the original corner or any re-monumentation.

Set corner proportionately and on line between the adjacent section corners.

LOCATION (Indicated by 'X')
SEAL:



CORNER O.K. 3-15-77 GR-SS
" " 6-11-82 PR-SS
" " 3-18-87 SS
1-GONE, 1-NEW MON. OK 7-20-92, JG
ALL OK, MON. OK 12-1-97 JG-SS
ALL OK 2-27-02 -JG

CERTIFIED CORRECT:

Dale C. Hagen (signature)

Registered Land Surveyor
DATE: January 07, 1976

TIE SKETCH OK, 10-3-07-JG

(Show at least four ties)

NOTE

Ties in trees to nail in disc.

