

23
SECTION

17
TOWN

07
RANGE

ADAMS COUNTY

COUNTY CORNER NO: 79

ROMPORTOL ID: 41707232000

PUBLIC LAND SURVEY MONUMENT RECORD

TYPE OF MONUMENT: HARRISON (BROKEN-TOP)
ADAMS COUNTY COORDINATES, NAD 83 (2007)

N. 205772.304

E. 583723.037

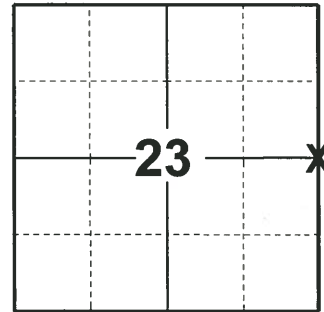
ELEVATION- DATUM

FIELD WORK DATE: 04/16/2019

BASIS FOR MONUMENT LOCATION

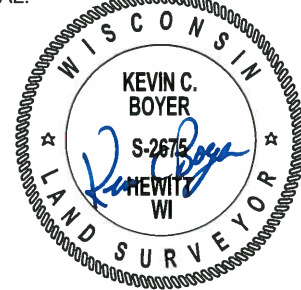
1975 - PLS 1103 RAN EDM/TRANSIT TRAVERSE AROUND SECTIONS 22, 23, AND 24 AND TIED INTO TRAVERSE AROUND SECTION 27. COULD FIND NO EVIDENCE OF THE ORIGINAL CORNER OR ANY REMONUMENTATION. SET CORNER EQUIDISTANT AND ON LINE BETWEEN ADJACENT SECTION CORNERS.

2019 - PLS 2675 FOUND HARRISON (BROKEN-TOP) 8" BELOW THE GROUND AND 1 WITNESS. THE MONUMENT AGREES WITH THE EXISTING WITNESS. ACCEPTED THE HARRISON (BROKEN-TOP) AS THE CORNER LOCATION. SET 4 NEW TIES AND MEASURED TO THE EXISTING WITNESS.



LOCATION
(INDICATE CORNER BY "X")

SEAL:

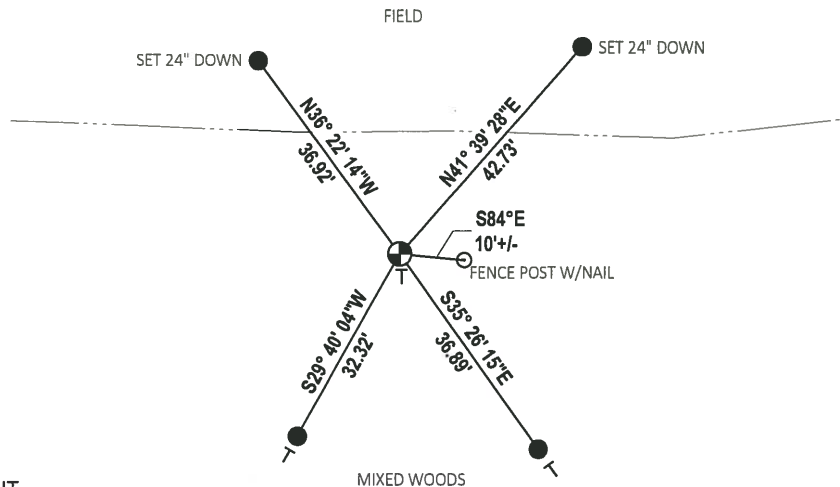
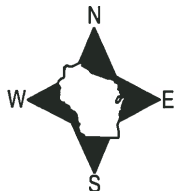


DATA SHOWN HERE ON THIS TIE SHEET IS CORRECT AND COMPLETE TO THE BEST OF MY KNOWLEDGE AND BELIEF.

PROFESSIONAL LAND SURVEYOR

DATE 5/1/19

- TIE SKETCH



- SET 3/4" x 18" IRON REBAR, 1.50#/FT
- ⊕ FOUND HARRISON (BROKEN-TOP) MONUMENT
- └ VINYL "T" POST

ADAMS COUNTY

Survey Monument Record

TYPE OF MONUMENT: Standard Harrison

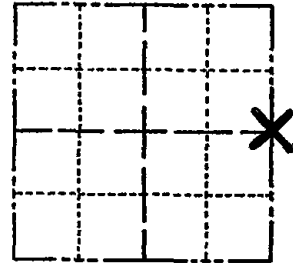
STATE PLANE COORDINATES: N _____
E _____

ELEVATION — M.S.L. DATUM: _____

THETA ANGLE: _____

FIELD BOOK: _____ PAGE _____

CORNER NO. 779⁽⁷⁹⁾
SECTION 23
TOWN 17
RANGE 7



LOCATION
(Indicated by 'X')

BASIS FOR MONUMENT LOCATION

(Use reverse side if necessary)

Show info such as: History of corner, with reference to Vol. and pg, dates, surveyor; exact description of monument replaced; if location computed, by taped or EDM traverse; landowner remarks, etc.

Ran EDM/transit traverse around Sections 22, 23 and 24 and tied into traverse around Section 27.

Could find no evidence of the original corner or any remonumentation.

Set corner corner equidistant and on line between adjacent section corners.

SEAL:



CERTIFIED CORRECT:

Dale C. Hagen
Registered Land Surveyor

DATE: August 7, 1975

CORNER O.K. 3-15-77 GR-SS
" " 6-11-82 PR-SS
" " 1-6-87 GR
" " 7-20-92 JG
ALL TIES GONE - TOP BROKEN 12-1-97 JG-SS
BOTTOM IN PLACE & NEED TIES
OK, 2-13-02 - JG

TIE SKETCH OK, 9-18-07-JG
OK 3-20-12 GR
(Show at least four ties)

NOTE:

Ties in trees to nail in disc.

FIELD

FIELD

