

24 SECTION 17 TOWN 07 RANGE

ADAMS COUNTY

COUNTY CORNER NO: 80
 ROMPORTOL ID: 41707242000

PUBLIC LAND SURVEY MONUMENT RECORD

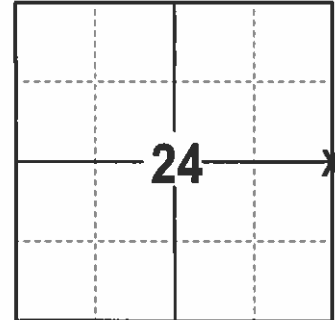
TYPE OF MONUMENT: HARRISON
 ADAMS COUNTY COORDINATES, NAD 83 (2007)

N. 205821.754

E. 589024.670

ELEVATION- DATUM

FIELD WORK DATE: 1/16/2017



LOCATION
(INDICATE CORNER BY "X")

BASIS FOR MONUMENT LOCATION

1976 - PLS 1103 RAN A TRAVERS AROUND SECTIONS 22, 23 AND 24 TO DETERMINE A SEARCH AREA. PLS 878 EXCAVATED WITH A BACKHOE AND FOUND NOTHING. SET A HARRISON PROPORTIONATELY ONLINE BETWEEN THE NORTHEAST AND SOUTHEAST CORNERS OF SECTION 24.

2017 - PLS 2994 FOUND EXISTING HARRISON 8 INCHES BELOW THE ROAD SURFACE AND 1 EXISTING WITNESS. THE HARRISON AGREES WITH THE EXISTING WITNESS. ACCEPTED HARRISON AND SET 4 NEW TIES.

SEAL:



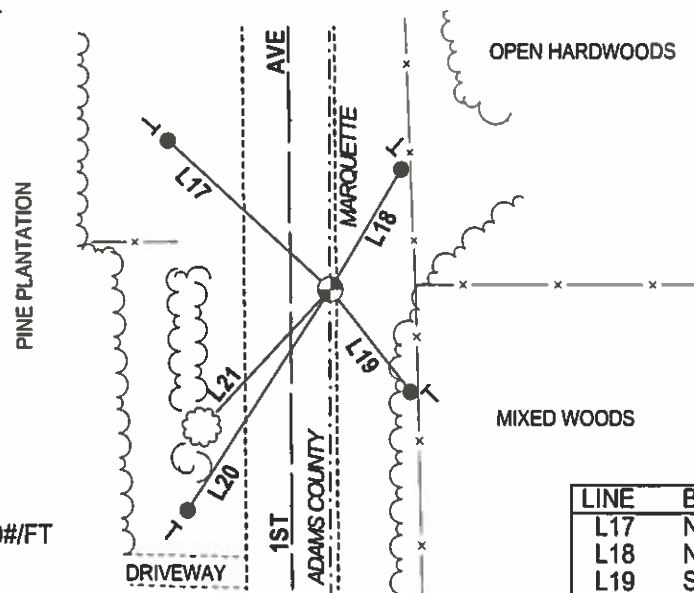
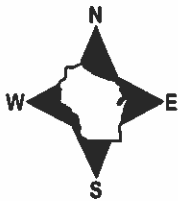
DATA SHOWN HERE ON THIS TIE SHEET IS CORRECT AND COMPLETE TO THE BEST OF MY KNOWLEDGE AND BELIEF.

PROFESSIONAL LAND SURVEYOR

DATE 3/7/17

- TIE SKETCH

NOTE: THE CORNER FALLS 10' EAST OF THE CENTERLINE OF 1ST AVE.



LINE	BEARING	DISTANCE
L17	N 47°41'21" W	57.38'
L18	N 30°42'09" E	36.30'
L19	S 38°10'55" E	33.77'
L20	S 33°08'58" W	68.41'
L21	S 43°10' W	50.0'+

- 3/4" x 18" IRON REBAR SET, 1.50#/FT
- ⊕ FOUND HARRISON
- └ VINYL "T" POST
- ⊗ FOUND WITNESS TREE

ADAMS COUNTY

Survey Monument Record

TYPE OF MONUMENT: Standard Harrison

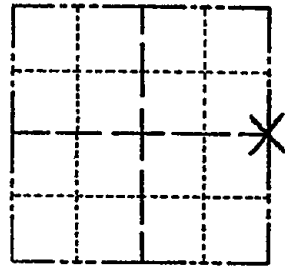
STATE PLANE COORDINATES: N _____
E _____

ELEVATION — M.S.L. DATUM: _____

THETA ANGLE: _____

FIELD BOOK: _____ PAGE _____

CORNER NO. 936
SECTION 24
TOWN 17
RANGE 7



LOCATION
(Indicated by 'X')

BASIS FOR MONUMENT LOCATION

(Use reverse side if necessary)

Show info such as: History of corner, with reference to Vol. and pg, dates, surveyor; exact description of monument replaced; if location computed, by taped or EDM traverse; landowner remarks, etc.

SEAL:



Ran EDM/transit traverse around Sections 22, 23 and 24 to determine search areas.

Excavation with backhoe by A.B.Kiedrowski, Adams County Surveyor, yielded no evidence of the original corner or any remonumentation.

Set corner proportionately and on line between the Northeast and Southeast corners of Section 24.

CORNER	O.K.	3-28-77	GR-SS
"	"	4-20-82	GR-SS
"	"	1-22-87	JL-SS
"	"	1-2-92	GR-JG
"	"	10-28-97	JG

CERTIFIED CORRECT:

Dale C. Hagen
Registered Land Surveyor

DATE: January 17, 1976

TIE SKETCH " 2-27-02-JG
DK 9-18-07-JG
(Show at least four ties) OK 2-20-12 MS

NOTE:

Ties in trees to nail in disc.

