

19  
SECTION

17  
TOWN

07  
RANGE

# ADAMS COUNTY

COUNTY CORNER NO: 82

ROMPORTOL ID: 41707190020

## PUBLIC LAND SURVEY MONUMENT RECORD

TYPE OF MONUMENT: HARRISON (BROKEN-TOP)  
ADAMS COUNTY COORDINATES, NAD 83 (2007)

N. 203082.900

E. 559946.915

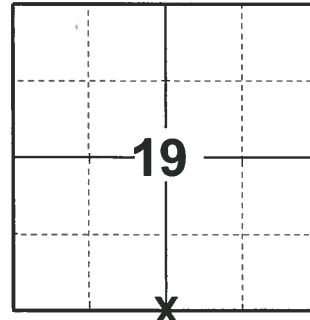
ELEVATION-      DATUM     

FIELD WORK DATE: 04/17/2019

### BASIS FOR MONUMENT LOCATION

1982 - PLS 878 NO RECORD OF ANY RESURVEYS. EXCAVATED 6'X7' HOLE, FOUND NOTHING. CORNER IS SET ON A STRAIGHT LINE BETWEEN OPPOSITE SECTION CORNERS AND IN PROPORTION TO THE ORIGINAL GOVERNMENT NOTES.

2019 - PLS 2675 FOUND MAG NAIL IN THE ROAD SURFACE, REMOVED AND FOUND HARRISON (BROKEN-TOP), 1 TIE, AND 1 WITNESS. THE MONUMENT AGREES WITH THE TIE AND WITNESS. ACCEPTED THE HARRISON (BROKEN-TOP) AS THE CORNER LOCATION. SET 3 NEW TIES AND MEASURED TO THE EXISTING TIE AND WITNESS.



**LOCATION**  
(INDICATE CORNER BY "X")

SEAL:



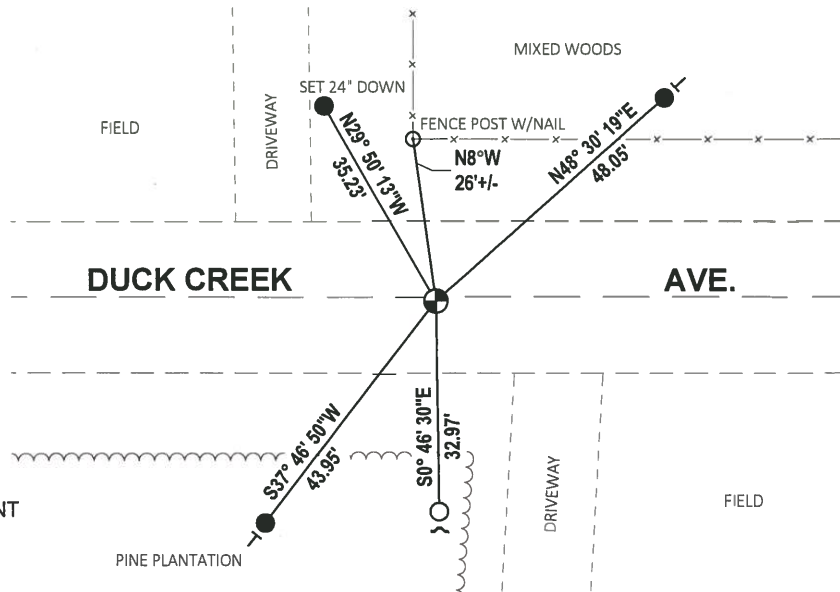
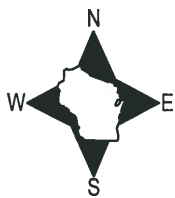
DATA SHOWN HERE ON THIS TIE SHEET IS CORRECT AND COMPLETE TO THE BEST OF MY KNOWLEDGE AND BELIEF.

PROFESSIONAL LAND SURVEYOR

DATE 5/1/19

### - TIE SKETCH

NOTE: THE CORNER FALLS ±2' SOUTH OF DUCK CREEK AVE. CENTERLINE.

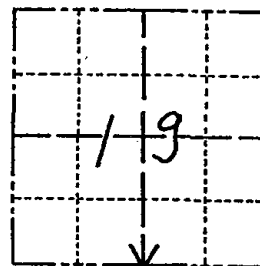


- SET 3/4" x 18" IRON REBAR, 1.50#/FT
- FOUND 3/4" IRON ROD
- ⊕ FOUND HARRISON (BROKEN-TOP) MONUMENT
- ⌘ STEEL FENCE POST
- ┌ VINYL "T" POST

# Government Land Corner Certificate

ADAMS County  
 TYPE OF MONUMENT: HARRISON MAG NAIL 11-02-05  
 STATE PLANE COORDINATES: N AFTER CONSTRUCTION  
 E \_\_\_\_\_  
 ELEVATION — M.S.L. DATUM: \_\_\_\_\_  
 THETA ANGLE: \_\_\_\_\_  
 FIELD BOOK: (109) PAGE (8)  
 DRAWN BY: S.J.H.

CORNER NO. 82  
 SECTION 19  
 TOWN 17  
 RANGE 7



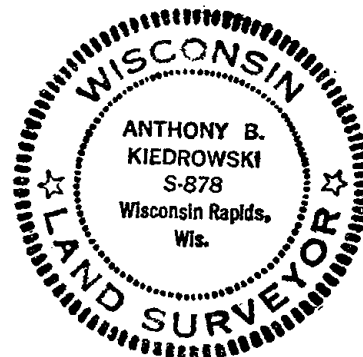
LOCATION  
(Indicated by 'X')

## BASIS FOR MONUMENT LOCATION

Show info such as: History of corner, with reference to Vol. and pg., dates, surveyor; exact description of monument replaced; if location computed, by taped or EDM traverse; landowner remarks, etc. (Use reverse side if necessary)

No record of any resurveys. Excavated 6'x7' hole, found nothing. Corner is set on a straight line between opposite Section corners and in proportion to the original government notes.

SEAL:



DATA SHOWN HERE ON  
CERTIFIED CORRECT:

*Anthony B. Kiedrowski*  
Registered Land Surveyor

DATE: 5-7-82

## TIE SKETCH

Show at least four ties, also fence lines, roads, topo, size and type of witness trees and if off road - best way to arrive at corner.

