

PUBLIC LAND SURVEY MONUMENT RECORD

TYPE OF MONUMENT: HARRISON (BROKEN-TOP)
 ADAMS COUNTY COORDINATES, NAD 83 (2007)

N. 203066.867

E. 562601.173

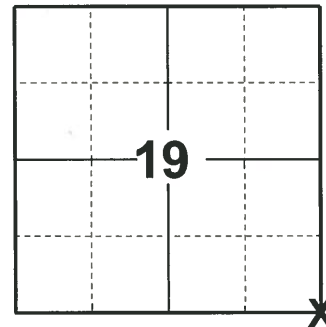
ELEVATION- DATUM

FIELD WORK DATE: 04/17/2019

BASIS FOR MONUMENT LOCATION

1982 - PLS 878 NO RECORD OF ANY RESURVEYS. EXCAVATED 11'X12'X2' DEEP HOLE, FOUND NO TRACE OF ANY PREVIOUS MONUMENTATION. ALSO, COULD NOT IDENTIFY ANY EVIDENCE OF ORIGINAL BT STUMP. THIS CORNER IS SET BY EXTENDING AND DOUBLING THE NORTH LINE OF THE NE1/4 OF SECTION 29. THIS LOCATION FITS POSSESSION LINES AND A MILE NORTH, WEST, AND SOUTH VERY WELL.

2019 - PLS 2675 FOUND MAG NAIL IN ROAD SURFACE, REMOVED AND FOUND HARRISON (BROKEN-TOP) 8" BELOW THE ROAD SURFACE AND 3 WITNESSES. THE MONUMENT AGREES WITH THE 3 EXISTING WITNESSES. ACCEPTED THE HARRISON (BROKEN-TOP) AS THE CORNER LOCATION. SET 4 NEW TIES AND MEASURED TO THE EXISTING WITNESSES.



LOCATION
 (INDICATE CORNER BY "X")

SEAL:



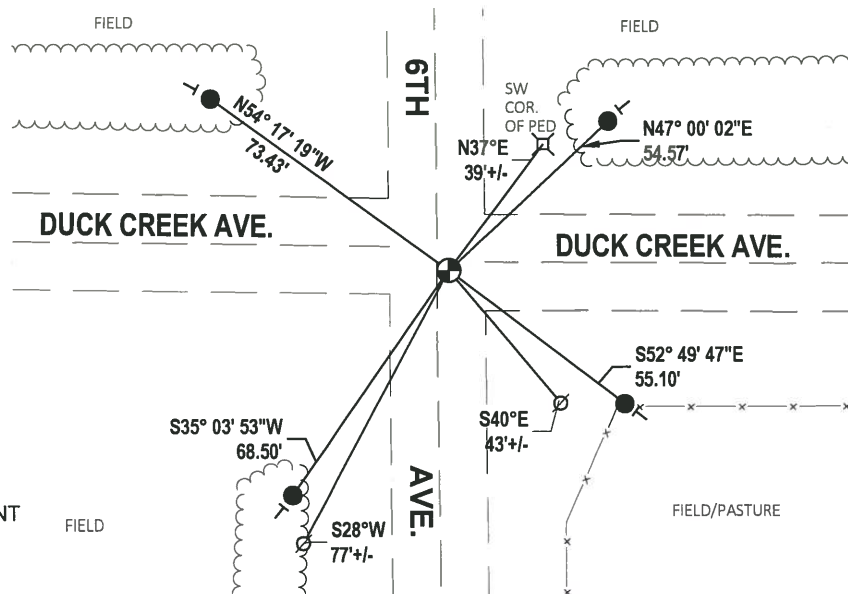
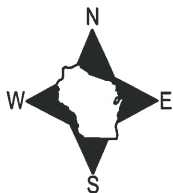
DATA SHOWN HERE ON THIS TIE SHEET IS CORRECT AND COMPLETE TO THE BEST OF MY KNOWLEDGE AND BELIEF.

PROFESSIONAL LAND SURVEYOR

DATE 5/1/19

TIE SKETCH

NOTE: THE CORNER FALLS ±3' EAST OF 6TH AVE. CENTERLINE, ±6' SOUTH OF DUCK CREEK AVE. (WEST) CENTERLINE, AND ±2' SOUTH OF DUCK CREEK AVE (EAST) CENTERLINE.

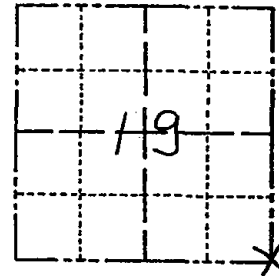


- SET 3/4" x 18" IRON REBAR, 1.50#/FT
- ⊕ FOUND HARRISON (BROKEN-TOP) MONUMENT
- ∅ WITNESS POWER POLE
- VINYL "T" POST

Government Land Corner Certificate

ADAMS County
 TYPE OF MONUMENT: HARRISON
 STATE PLANE COORDINATES: N _____
 E _____
 ELEVATION — M.S.L. DATUM: _____
 THETA ANGLE: _____
 FIELD BOOK: _____ (103) PAGE _____ (7)
 DRAWN BY: S.J.H.

CORNER NO. 83
 SECTION 19
 TOWN 17
 RANGE 7

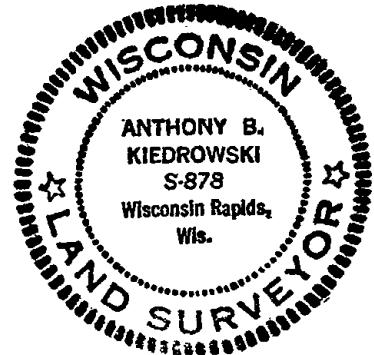


BASIS FOR MONUMENT LOCATION

Show info such as: History of corner, with reference to Vol. and pg., dates, surveyor; exact description of monument replaced; if location computed, by taped or EDM traverse; landowner remarks, etc. (Use reverse side if necessary)

No record of any resurveys. Excavated 11'x12'x2' deep hole, found no trace of any previous monumentation. Also, could not identify any evidence of original BT stump (N 60 W, 6 links). This corner is set by extending and doubling the North line of the NE 1/4 of Section 29. This location fits possession lines a mile North, West and South very well.

SEAL:



DATA SHOWN HERE ON CERTIFIED CORRECT:

Anthony B. Kiedrowski
 Registered Land Surveyor

DATE: 5-7-82

TIE SKETCH

Show at least four ties, also fence lines, roads, topo, size and type of witness trees and if off road - best way to arrive at corner.

