

20  
SECTION

17  
TOWN

07  
RANGE

# ADAMS COUNTY

COUNTY CORNER NO: 84

ROMPORTOL ID: 41707200020

## PUBLIC LAND SURVEY MONUMENT RECORD

TYPE OF MONUMENT: HARRISON  
ADAMS COUNTY COORDINATES, NAD 83 (2007)

N. 203074.422

E. 565240.820

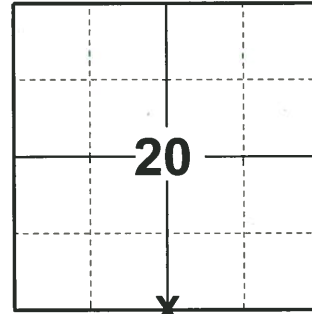
ELEVATION- \_\_\_\_\_ DATUM \_\_\_\_\_

FIELD WORK DATE: 04/17/2019

### BASIS FOR MONUMENT LOCATION

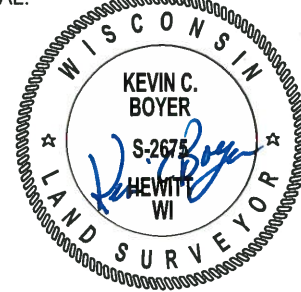
1982 - PLS 878 NO RECORD OF ANY RESURVEYS. FOUND BOTTOM 8" OF 3" DIAMETER ROTTED WOOD STAKE. REPLACED WITH HARRISON MONUMENT.

2019 - PLS 2675 FOUND HARRISON 3" BELOW THE ROAD SURFACE AND 1 WITNESS. THE MONUMENT AGREES WITH THE WITNESS. ACCEPTED THE HARRISON AS THE CORNER LOCATION. SET 4 NEW TIES AND MEASURED TO EXISTING WITNESS.



**LOCATION**  
(INDICATE CORNER BY "X")

SEAL:



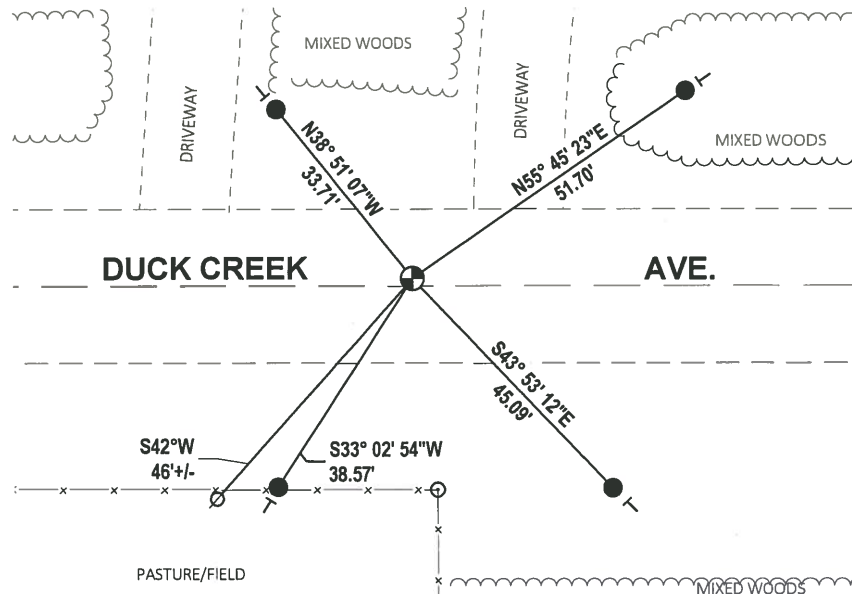
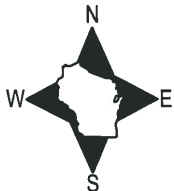
DATA SHOWN HERE ON THIS TIE SHEET IS CORRECT AND COMPLETE TO THE BEST OF MY KNOWLEDGE AND BELIEF.

PROFESSIONAL LAND SURVEYOR

DATE 5/1/19

### TIE SKETCH

NOTE: THE CORNER FALLS ±1' NORTH OF DUCK CREEK AVE. CENTERLINE.

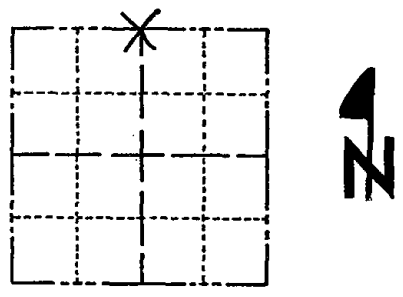


- SET 3/4" x 18" IRON REBAR, 1.50#/FT
- ⊕ FOUND HARRISON MONUMENT
- ∅ WITNESS POWER POLE
- VINYL "T" POST

# Government Land Corner Certificate

ADAMS County  
 TYPE OF MONUMENT: HARRISON  
 STATE PLANE COORDINATES: N \_\_\_\_\_  
 E \_\_\_\_\_  
 ELEVATION — M.S.L. DATUM: \_\_\_\_\_  
 THETA ANGLE: \_\_\_\_\_  
 FIELD BOOK: (LOG/PAGE (22))  
 DRAWN BY: S.J.M.

CORNER NO. 84  
 SECTION 29  
 TOWN 17  
 RANGE 7



LOCATION (Indicated by 'X')

## BASIS FOR MONUMENT LOCATION

Show info such as: History of corner, with reference to Vol. and pg., dates, surveyor; exact description of monument replaced; if location computed, by taped or EDM traverse; landowner remarks, etc. (Use reverse side if necessary)

No record of any resurveys. Found bottom 8" of 3" diameter rotted wood stake. Replaced stake with Harrison.

SEAL:



DATA SHOWN HERE ON CERTIFIED CORRECT:

*Anthony B. Kiedrowski*  
Registered Land Surveyor

DATE: 5-7-82

## TIE SKETCH

Show at least four ties, also fence lines, roads, topo, size and type of witness trees and if off road - best way to arrive at corner.

