

PUBLIC LAND SURVEY MONUMENT RECORD

TYPE OF MONUMENT: HARRISON (BROKEN-TOP)
 ADAMS COUNTY COORDINATES, NAD 83 (2007)

N. 203081.853

E. 567880.312

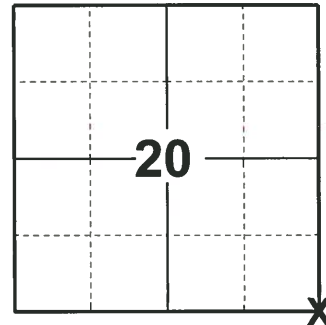
ELEVATION- DATUM

FIELD WORK DATE: 04/17/2019

BASIS FOR MONUMENT LOCATION

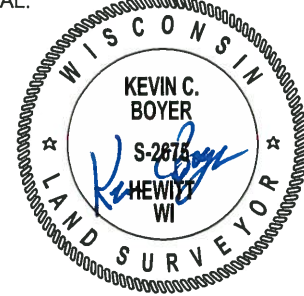
1979 - PLS 878 EXCAVATED WITH BACKHOE. FOUND 4"X6"X4" SQUARE STONE ENCIRCLED BY 10 SMALLER GRANITE AND SAND STONES. LOCAL RESIDENT STOPPED BY AND SAID THERE WERE NO STONES NATURAL TO THE IMMEDIATE AREA. WE FOUND NO OTHER STONE IN THE 2'X10' HOLE. STONE CALLED FOR BY Z. WISE, 1878 IN FIELD BOOD 2 PAGE 141.

2019 - PLS 2675 FOUND MAG NAIL IN THE ROAD SURFACE, REMOVED AND FOUND HARRISON (BROKEN-TOP) 12" BELOW THE ROAD SURFACE AND DID NOT RECOVER ANY TIES OR WITNESSES. ACCEPTED THE HARRISON (BROKEN-TOP) AS THE CORNER LOCATION AND SET 4 NEW TIES.



LOCATION
 (INDICATE CORNER BY "X")

SEAL:



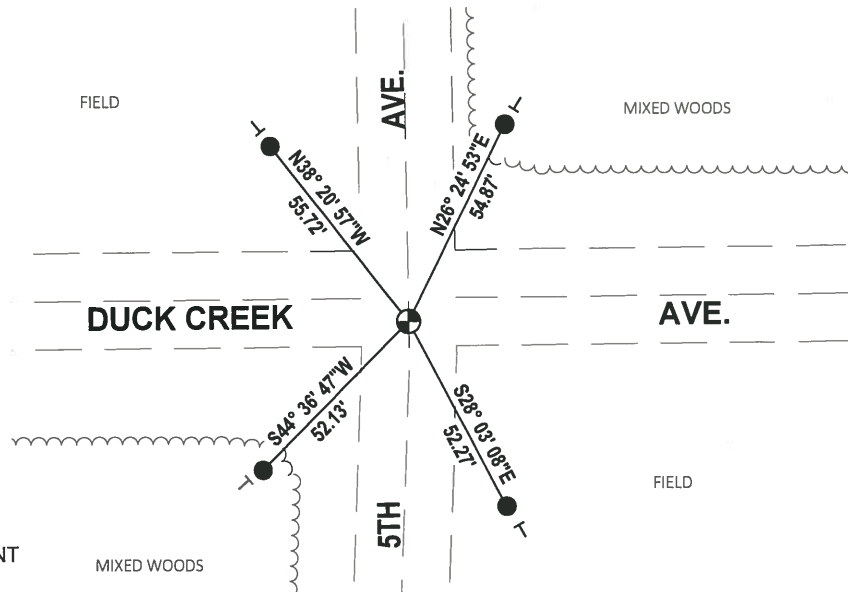
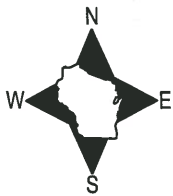
DATA SHOWN HERE ON THIS TIE SHEET IS CORRECT AND COMPLETE TO THE BEST OF MY KNOWLEDGE AND BELIEF.

PROFESSIONAL LAND SURVEYOR

DATE 5/1/19

TIE SKETCH

NOTE: THE CORNER FALLS ±6' SOUTH OF DUCK CREEK AVE CENTERLINE AND ON THE CENTERLINE OF 5TH AVE.



- SET 3/4" x 18" IRON REBAR, 1.50#/FT
- ⊕ FOUND HARRISON (BROKEN-TOP) MONUMENT
- VINYL "T" POST

Government Land Corner Certificate

ADAMS County

TYPE OF MONUMENT: HARRISON

STATE PLANE COORDINATES: N _____
E _____

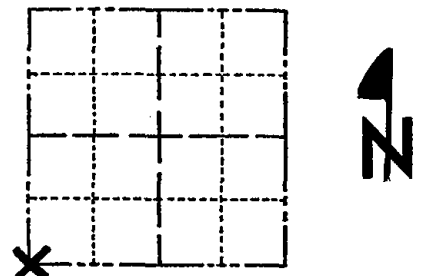
ELEVATION — M.S.L. DATUM: _____

THETA ANGLE: _____

FIELD BOOK: 54 (102) PAGE 56 (25)

DRAWN BY: LANCE J. HABECK

CORNER NO. 85
SECTION 21
TOWN 17
RANGE 7



LOCATION
(Indicated by 'X')

BASIS FOR MONUMENT LOCATION

Show info such as: History of corner, with reference to Vol. and pg., dates, surveyor; exact description of monument replaced; if location computed, by taped or EDM traverse; landowner remarks, etc. (Use reverse side if necessary)

Excavated with backhoe. Found 4 x 6 x 4" square stone encircled by 10 smaller granite and sand stones. Local resident stopped by and said there were no stones natural to the immediate area. We found no other stone in the 2' x 10' hole. (See picture) Stone called for by Z. Wiser, 1878.

old field book 2, pg 141

SEAL:



DATA SHOWN HERE ON
CERTIFIED CORRECT:

Anthony B. Kiedrowski
Registered Land Surveyor

DATE: 6/13/79

TIE SKETCH

Show at least four ties, also fence lines, roads, topo, size and type of witness trees and if off road - best way to arrive at corner.

